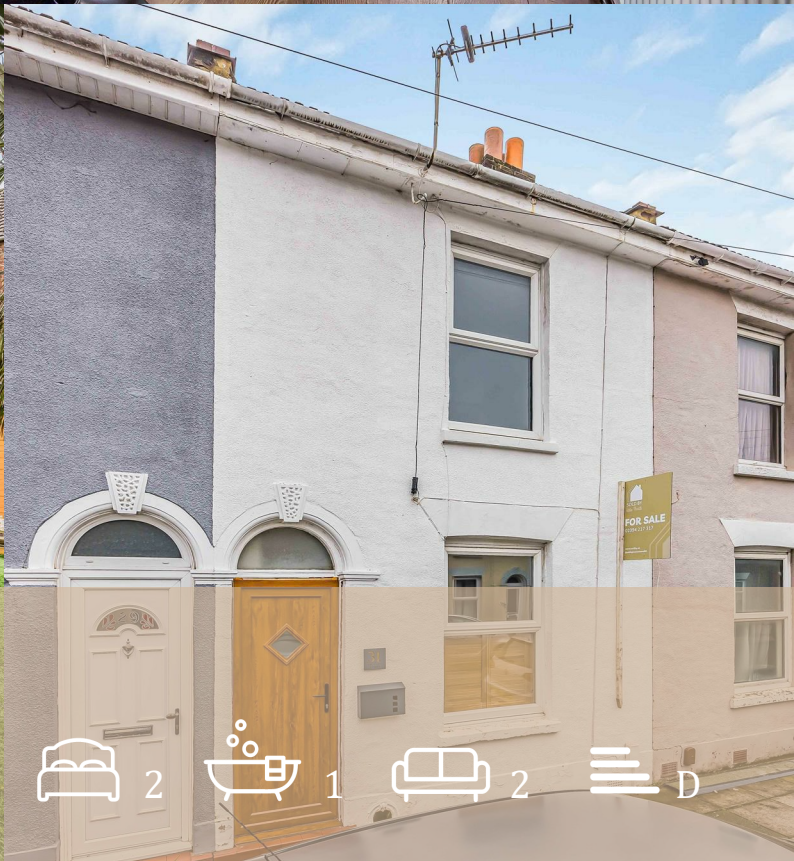
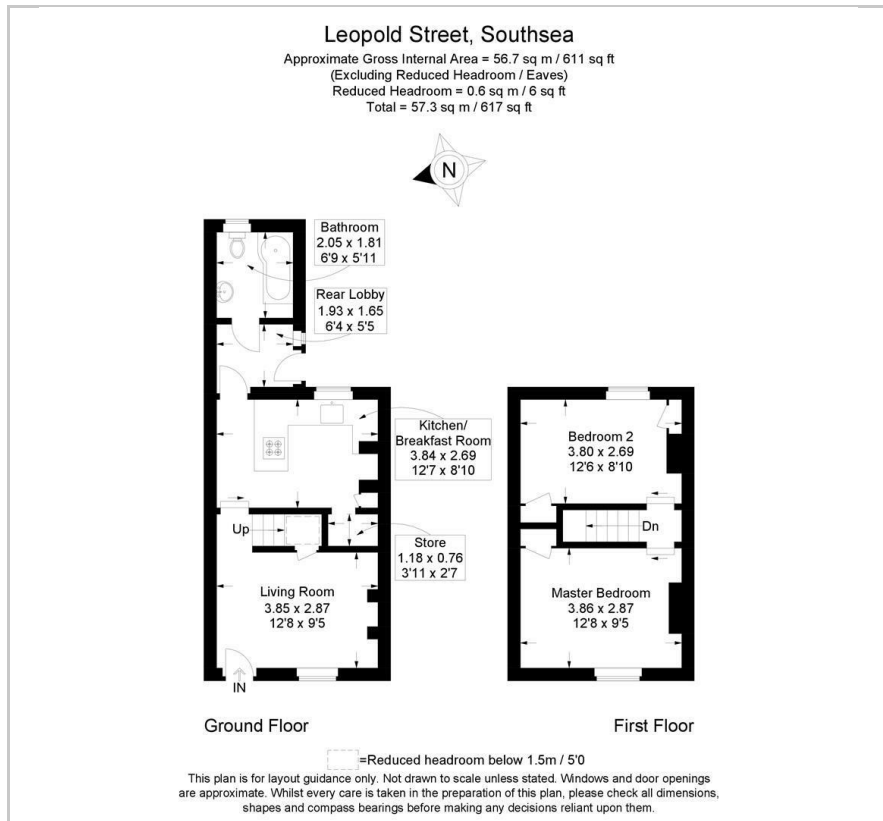




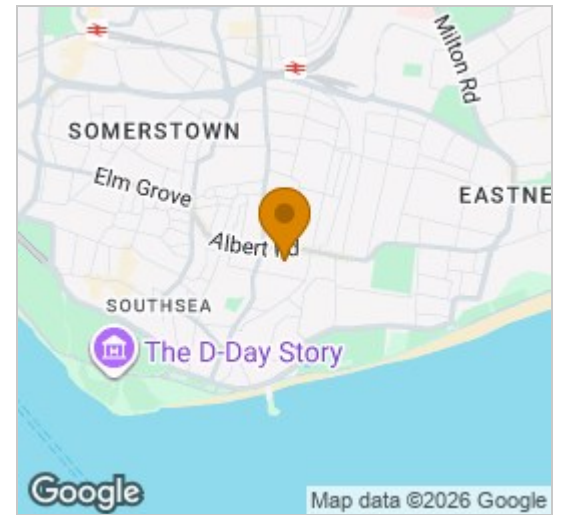
31 Leopold Street
Southsea, Portsmouth, PO4 0JZ
Offers in the region of £259,999



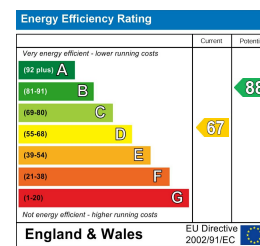
Floor Plan



Area Map



Energy Efficiency Graph



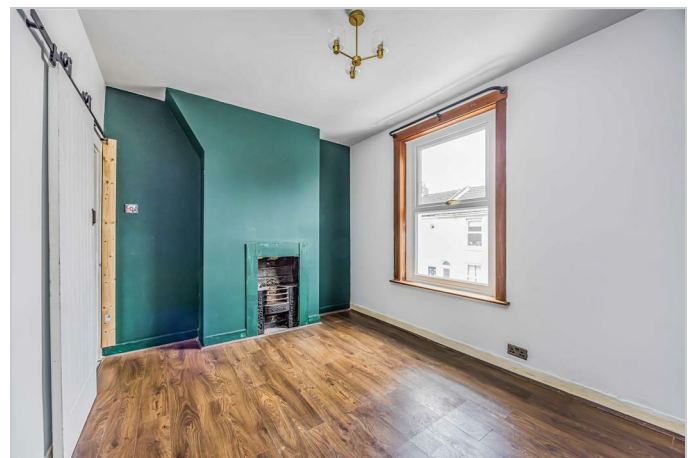
Viewing

Please contact our Central Office on 02394 217317 if you wish to arrange a viewing appointment for this property or require further information.

- TWO DOUBLE BEDROOMS
- MODERN BATHROOM
- KITCHEN WITH BREAKFAST BAR
- WELL PRESENTED THROUGHOUT
- LOW MAINTENANCE GARDEN
- IDEAL SOUTHSEA LOCATION



VACANT WITH NO FORWARD CHAIN ** LOW MAINTENANCE GARDEN ** IDEAL SOUTHSEA LOCATION ** DOUBLE BEDROOMS ** CUL-DE-SAC LOCATION OFF ALBERT ROAD ** UTILITY AREA



These particulars, whilst believed to be accurate are set out as a general outline only for guidance and do not constitute any part of an offer or contract. Intending purchasers should not rely on them as statements of representation of fact, but must satisfy themselves by inspection or otherwise as to their accuracy. No person in this firm's employment has the authority to make or give any representation or warranty in respect of the property.

Tangier Road, PO3 6PQ
 Tel: 02394 217317 Email: sarah@soldby.uk www.soldby.uk