

St. Quintin Avenue, North Kensington W10

Offers over £1,250,000



St. Quintin Avenue

North Kensington W10

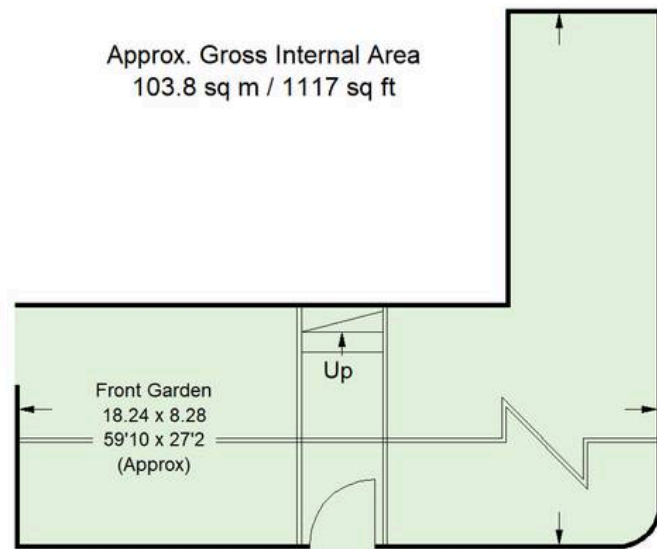
Nestled in the heart of a vibrant neighbourhood, this elegant 2 bedroom garden flat exudes timeless sophistication and modern appeal.

Nestled in the heart of a vibrant neighbourhood, this elegant 2 bedroom garden flat exudes timeless sophistication and modern appeal.

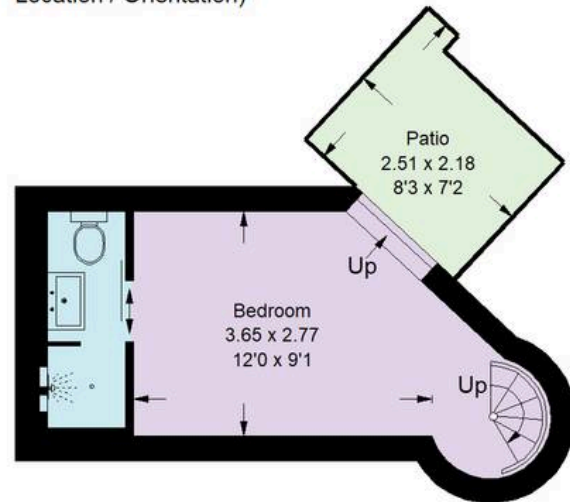
The double aspect reception room has high ceilings, creating a grand and airy ambience, this flows through to a modern kitchen and dining room, and access onto the garden. The remaining accommodation comprises two spacious double bedrooms, family bathroom, ensuite shower room and dressing room. There is also the possibility to extend under the front garden subject to planning permission.



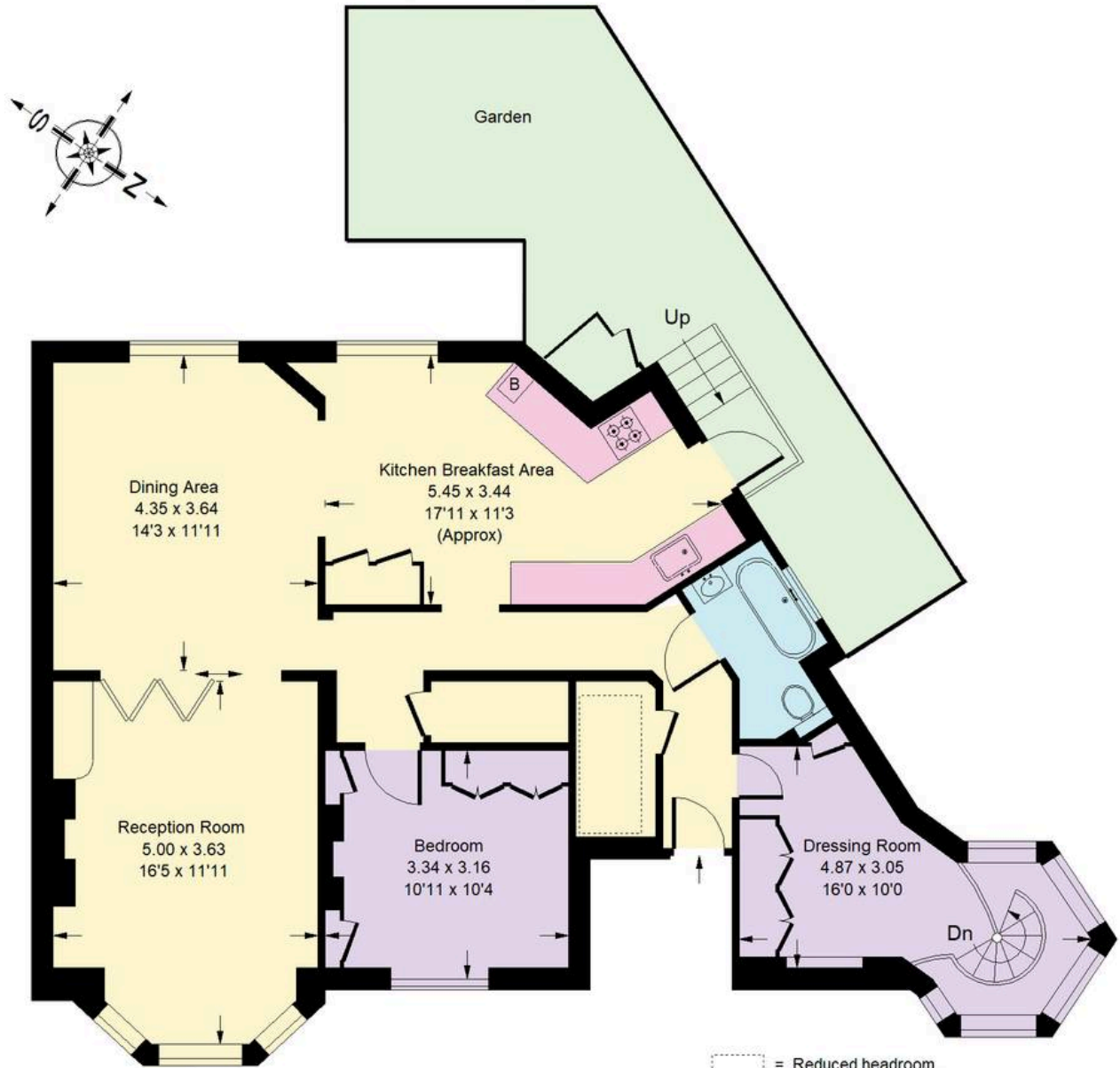
St. Quintin Avenue, W10



(Not Shown In Actual
Location / Orientation)



Lower Ground Floor



= Reduced headroom
below 1.5 m / 5'0

Ground Floor

Whilst every attempt has been made to ensure the accuracy of the floor plan, measurements are approximate and not to scale.
No guarantee is given on the total square footage of the property quoted on the plan. Figures given are for guidance.
Plan is for illustration purposes only, not to be used for valuations.



Rigby & Marchant

115 Westbourne Studios 242 Acklam Road, London - W10 5JJ

020 7221 7210

sales@rigbyandmarchant.co.uk

www.rigbyandmarchant.co.uk/

R&M