



Let **UK** Home

2 Bedrooms

Flat

Located in London

£2,600 Per Month



info@letukhome.co.uk

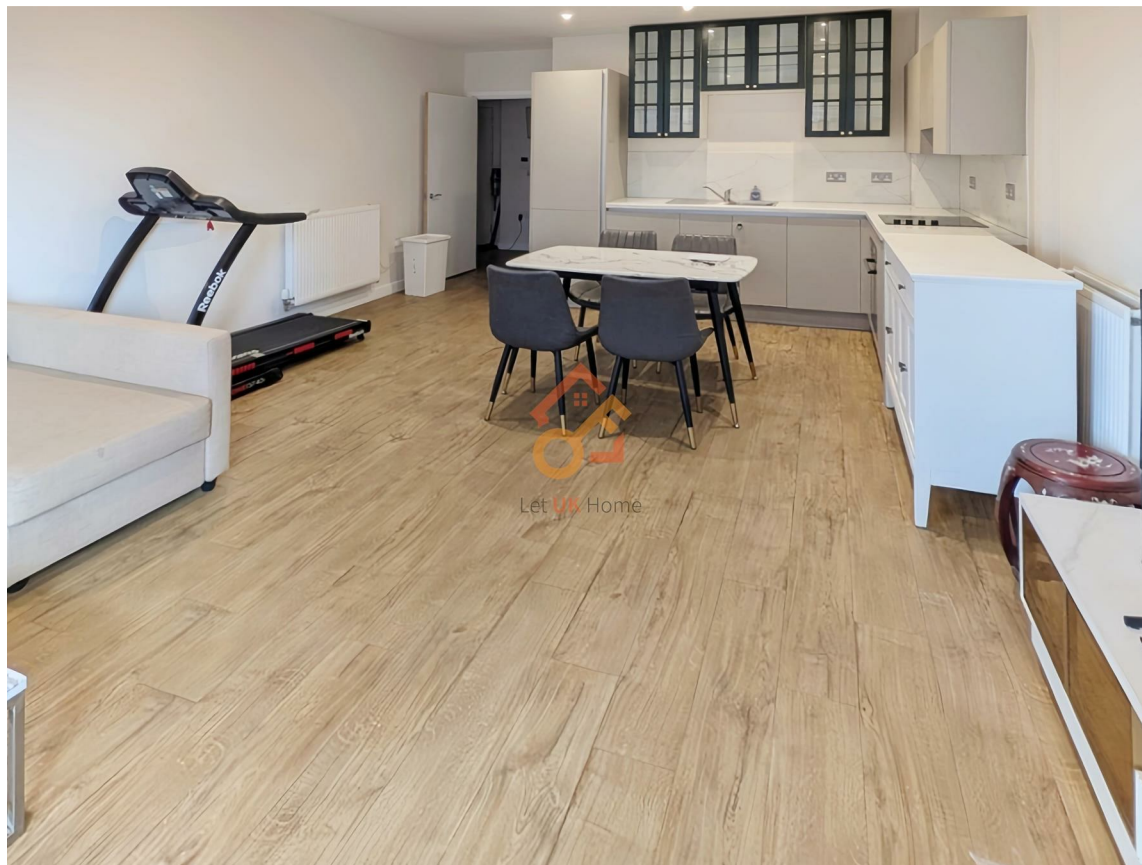
<https://www.letukhome.co.uk/>

01795 358 886



8 Frank Searle Passage London

E17 6DU



Let UK Home are excited to present this spacious, light-filled two-bedroom apartment at Rosebay House within Blackhorse View, an iconic eco-residence in East London Zone 2.

Boasting unbeatable panoramic views over Europe's largest urban wetland Walthamstow Wetlands and the lush greenery of Lee Valley Park, the home offers a rare blend of peaceful natural scenery and convenient city living.

The residents of this development will benefit from comprehensive on-site amenities including a concierge, scenic rooftop terrace, communal meeting rooms, an on-site café and convenience store, alongside shared social lounges for residents to relax and socialise.

Just a short walk from Blackhorse Road Station, the property benefits from direct access to the Victoria Line and Suffragette Line, with fast connections to King's Cross, Oxford Street and the City of London. Heathrow and Gatwick Airports are easily reachable.

Excellent local education provisions cover highly-rated primary and secondary schools for families. Top universities including UCL, KCL and LSE are within easy commuting distance.

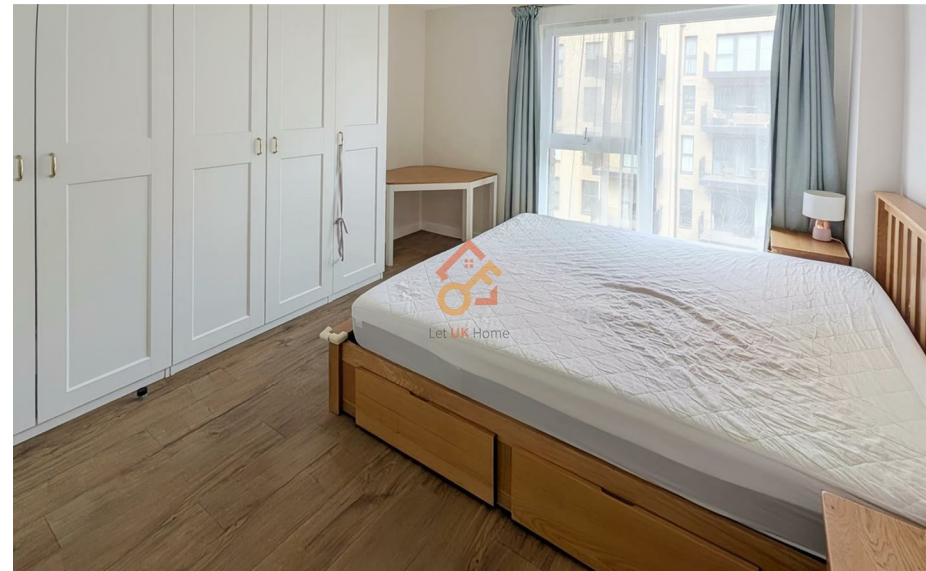
Nestled within vibrant Walthamstow's creative district, residents enjoy endless local amenities: Europe's longest street market, global food stalls, boutique restaurants, craft breweries, comedy venues, art galleries and the iconic neon museum.

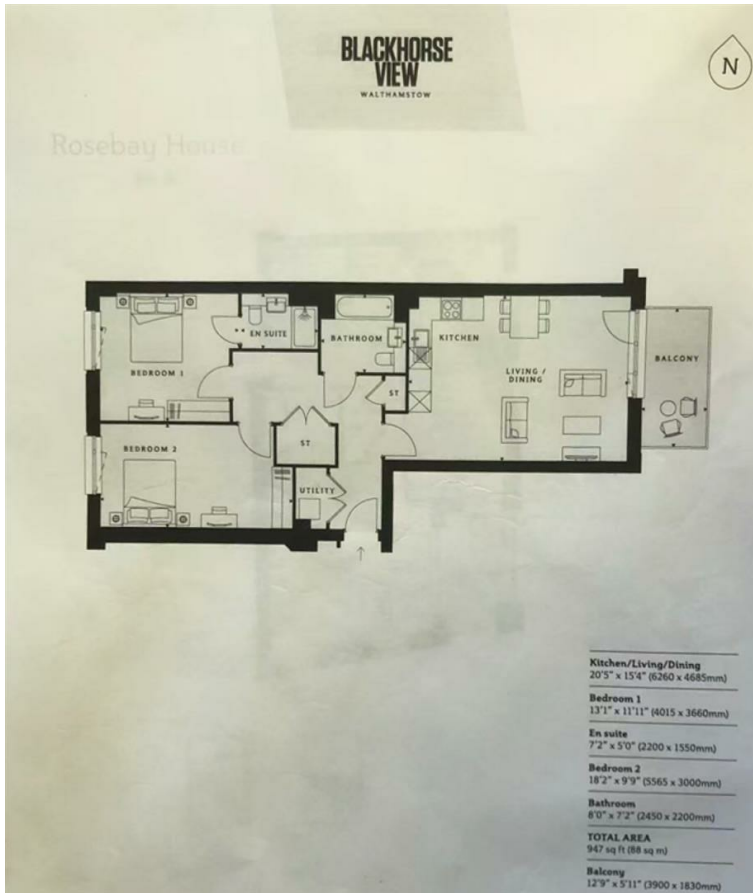
8 Frank Searle Passage London

£2,600 Per Month



- 6th Floor
- 24h Security
- East London Zone 2
- Victoria Line and Suffragette Line
- Walthamstow
- Concierge Service
- Rooftop Terrace
- Walk to Blackhorse Road Station
- Quick Access to UCL
- EPC Rating: B





Let **UK** Home

3F 2 Eastbourne Terrace
Paddington
London
W2 6LG

01795 358 886

info@letukhome.co.uk

Council Tax Band: C

Local Authority:

Agents Note: Whilst every care has been taken to prepare these particulars, they are for guidance purposes only. All measurements are approximate and are for general guidance purposes only and whilst every care has been taken to ensure their accuracy, they should not be relied upon and potential buyers/tenants are advised to recheck the measurements.

Energy Efficiency Rating		Current	Potential
Very energy efficient - lower running costs			
(92 plus) A			
(81-91) B		86	86
(69-80) C			
(55-68) D			
(39-54) E			
(21-38) F			
(1-20) G			
Not energy efficient - higher running costs			
England & Wales	EU Directive 2002/91/EC		

<https://www.letukhome.co.uk/>