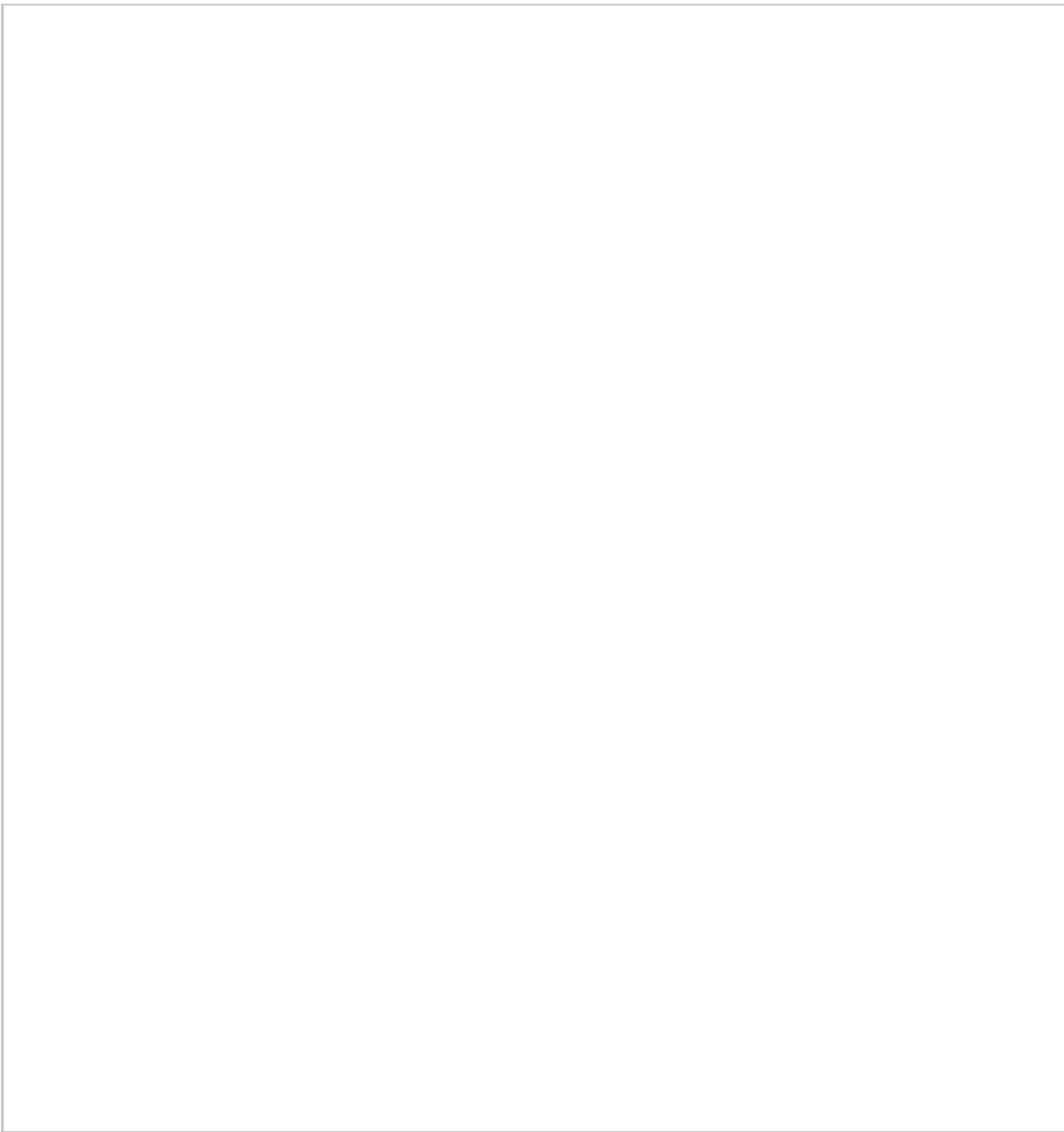


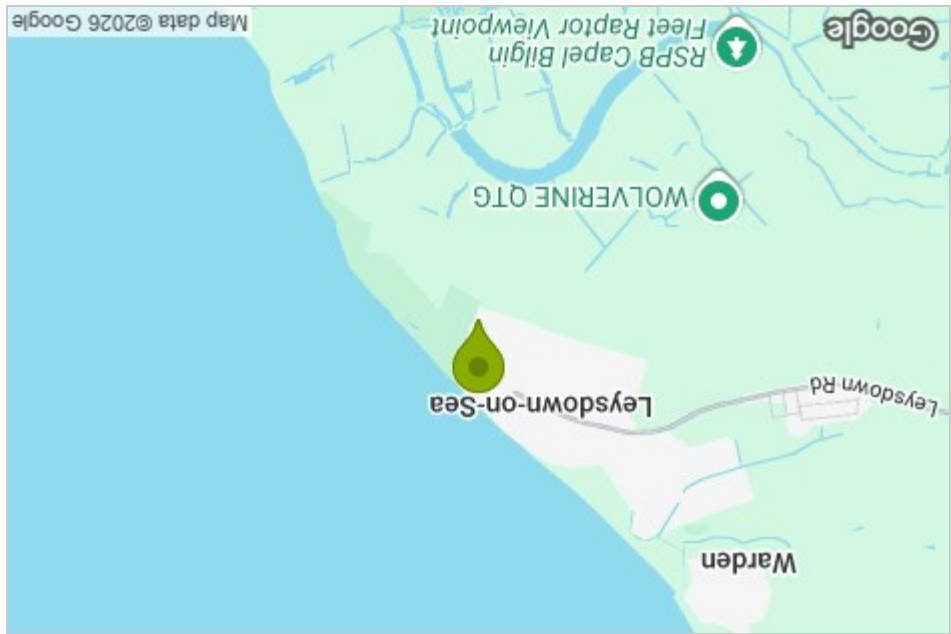
39 Seaview Park
 Leysdown on sea, Sheerness, ME12 4NB
Asking price £90,000



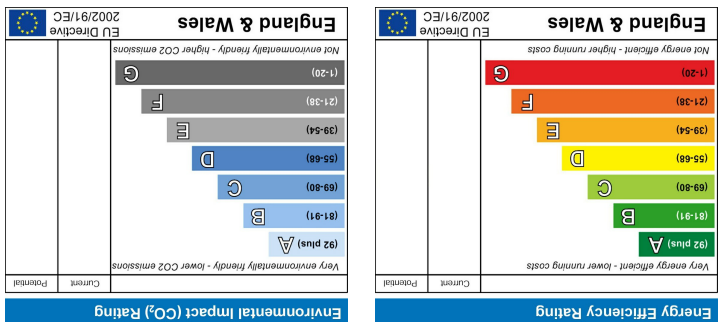
Floor Plan



Area Map



Energy Efficiency Graph

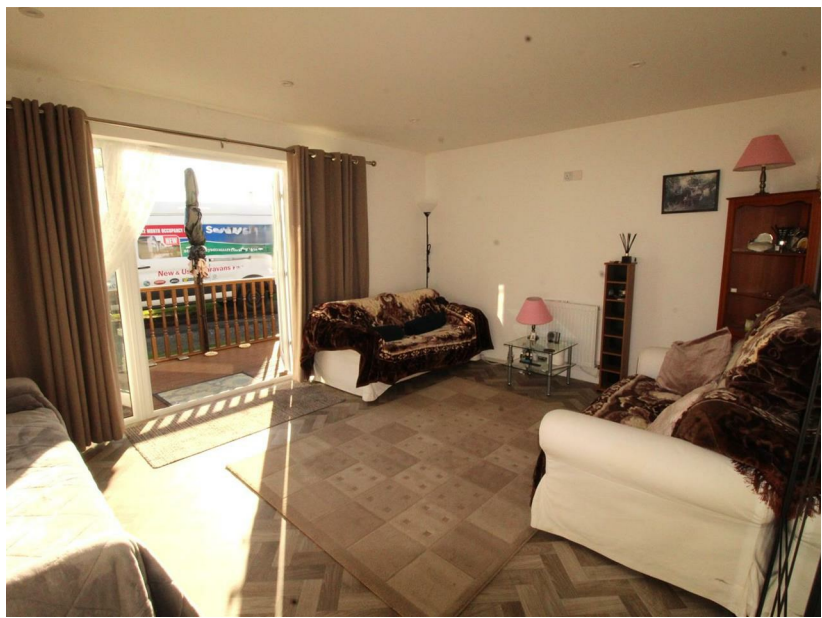


Viewing

Please contact our Isle of Sheppey Office on 01795 666 666 if you wish to arrange a viewing appointment for this property or require further information.

These particulars, whilst believed to be accurate are set out as a general outline only for guidance and do not constitute any part of an offer or contract. Intending purchasers should not rely on them as statements of representation or fact, but must satisfy themselves by inspection or otherwise as to their accuracy. No person in this firm's employment has the authority to make or give any representation or warranty in respect of the property.

39 Seaview Park



- 12 Month New Chalet Development
- 2 Double Bedrooms
- Decking Area At front Of Property
- Walking Distance To The Blue Flag Beach
- Peaceful Living On A Quite Residential Suite
- Cash buyers Only
- Private Drive Way
- Open Plan Living, Double Glazing Throughout
- 10 Minutes Walk To Leysdown On Sea
- Beautiful Views

Description

£90,000 Asking
Cash buyers Only.

Nestled in the heart of the sought-after Seaview Development in Leysdown on Sea, this charming new chalet offers a delightful blend of modern living and coastal charm. This property features an open-plan design that maximises space and light, making it perfect for those who appreciate a relaxed seaside lifestyle. With two generously sized double bedrooms, it provides ample accommodation for families or couples seeking a tranquil retreat.

The highlight of this property is undoubtedly the beautiful decked area, ideal for enjoying warm summer evenings with friends and family. Imagine sipping a refreshing drink while soaking in the serene atmosphere of your surroundings.

Moreover, the chalet is conveniently located within walking distance to the stunning Blue Flag beach, where you can enjoy sun-soaked days by the sea. Local amenities are also just a short stroll away, ensuring that you have everything you need right at your fingertips.

This property is part of a 12-month new chalet development, making it an excellent opportunity for those looking to invest in a modern home by the coast. Whether you are seeking a permanent residence or a holiday getaway, this chalet in Seaview Park is sure to impress. Don't miss the chance to make this seaside haven your own.

Leysdown on sea, Sheerness, ME12 4NB

