



TEMPLE FORTUNE
ESTATES

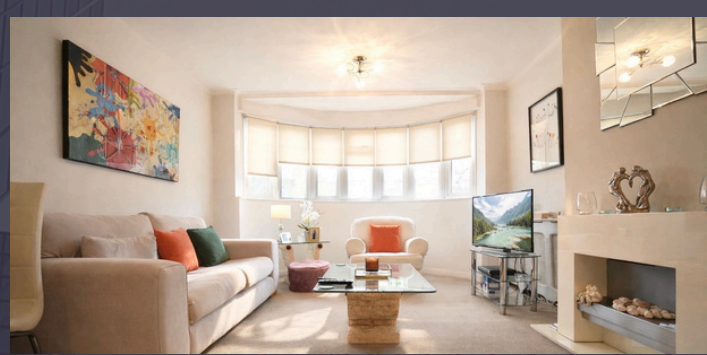
Beaufort Park, Golders Green, NW11 6BY

STYLISH THREE BEDROOM APARTMENT FOR SALE

PRICE
£499,950

ABOUT THE PROPERTY

The property offers approximately 90 sq m (968 sq ft) of well-proportioned accommodation and is presented in excellent condition throughout. The apartment features a spacious reception room with an attractive bay window, a separate fitted kitchen, three comfortable bedrooms, a modern family bathroom, and a separate WC.



PROPERTY FEATURES



SPACIOUS & BRIGHT
FIRST FLOOR APARTMENT



THREE DOUBLE BEDROOMS



FAMILY BATHROOM &
SEPARATE WC



WELL-MAINTAINED
COMMUNAL GARDEN



968 SQ FT OF LIVING
SPACE

GET IN TOUCH

020 8952 0908
079 5629 1499

admin@templefe.co.uk
www.templefe.co.uk

1 Hallswelle Parade, Finchley
Road, London, NW11 0DL



TEMPLE FORTUNE
ESTATES

MORE ABOUT THE PROPERTY



Further benefits include a private balcony overlooking beautifully maintained communal gardens, excellent natural light, and a practical layout ideal for both families and professionals.

Conveniently located within easy reach of Golders Green and Hendon, offering excellent transport links, local amenities, and the green open spaces of Hampstead Heath Extension nearby.

Council Tax Band D
Service Charges £394/quarter
Ground Rent £0



NEARBY TRANSPORT LINKS:

-  Golders Green Underground Station / Northern Line: **1.5 mile**
-  Brent Cross Underground Station / Northern Line: **1.5 mile**



GET IN TOUCH

020 8952 0908
079 5629 1499

admin@templefe.co.uk
www.templefe.co.uk

1 Hallswelle Parade, Finchley
Road, London, NW11 0DL



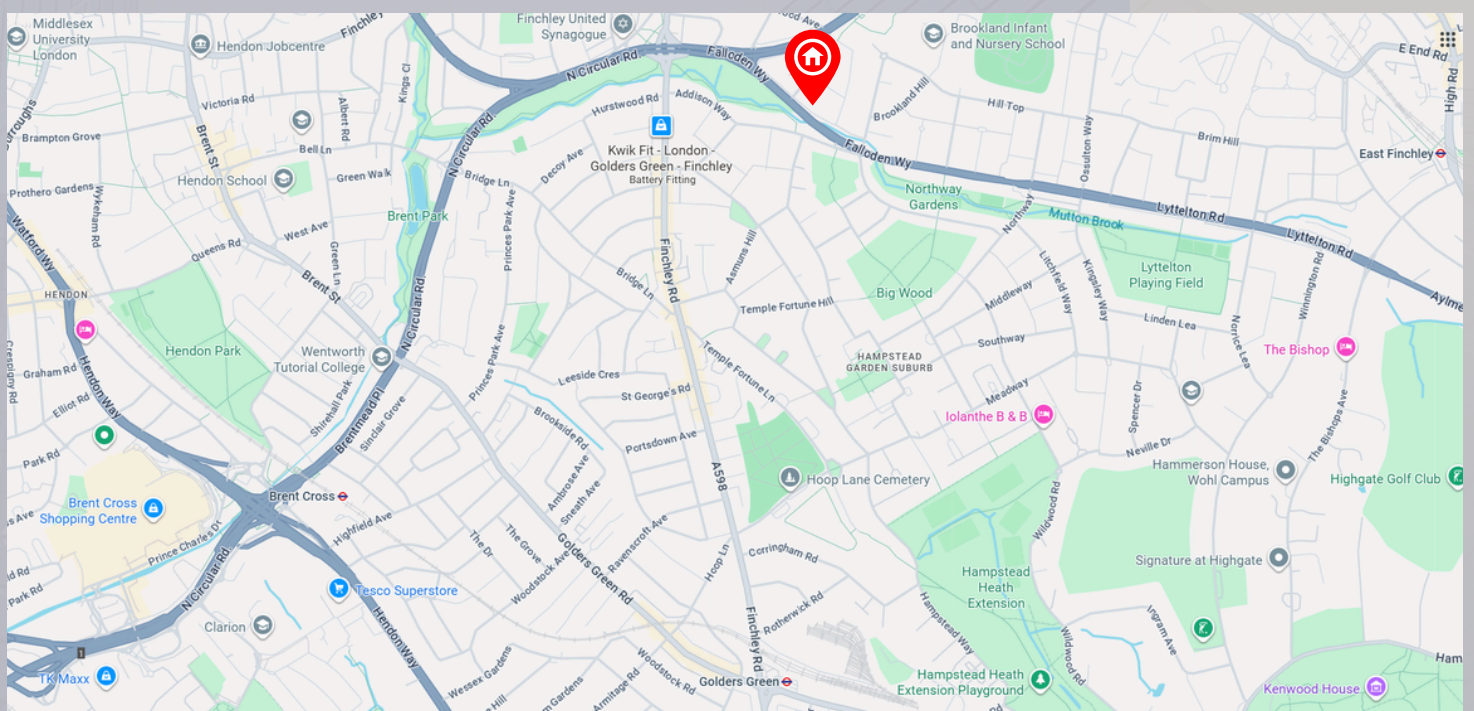
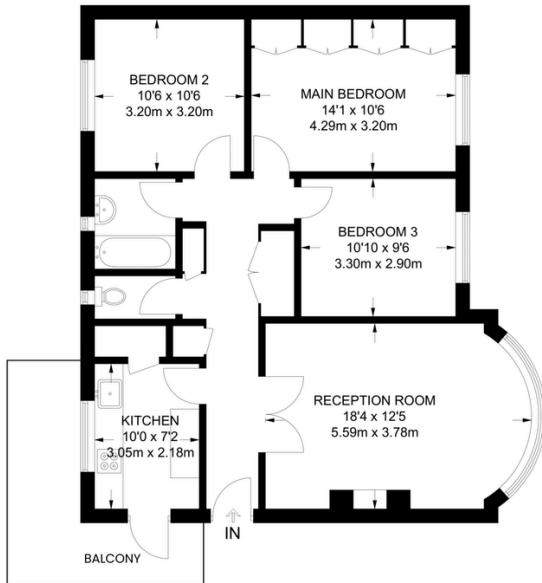
TEMPLE FORTUNE ESTATES

Beaufort Park London NW11 6BY

First Floor

Approximate gross area
90 sq m (968 sq ft)

This floor plan is provided for illustrative purposes only. Not to scale.
Dimensions are approximate; please contact the agency for precise measurements.



GET IN TOUCH

020 8952 0908
079 5629 1499

admin@templefe.co.uk
www.templefe.co.uk

1 Hallswelle Parade, Finchley
Road, London, NW11 0DL