



Roan Street, SE10
£2,000,000

Dexters



Roan Street, SE10

A charming immaculately presented four bedroom double fronted family home situated on one of West Greenwich's most desirable residential streets, this exceptional four-bedroom house offers beautifully balanced living space, immaculate interiors, and rare off-street parking all moments from Greenwich Park.

Thoughtfully modernised while retaining a warm, elegant aesthetic, this property spans approximately 2,305 sq. Ft. Over four levels, including a versatile basement utility area and a superb first-floor terrace. The ground floor is ideal for family living and entertaining, featuring a bright double reception room and a contemporary kitchen/dining space with direct garden access. The first floor includes two generously sized bedrooms, with the principal suite offering a walk-in wardrobe and stylish bathroom. A private terrace on the landing provides a peaceful outdoor retreat. The top floor hosts two further spacious double bedrooms, served by a sleek family bathroom.

Positioned in the heart of West Greenwich, the home enjoys immediate access to Greenwich Park, the boutiques and delis of Royal Hill, outstanding local schools, and excellent transport links including Greenwich Station, the DLR, and various bus routes.

Features

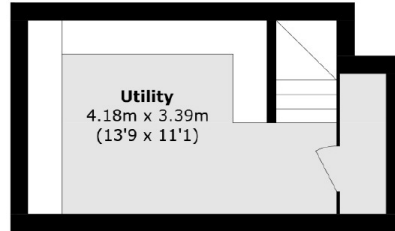
- Chain Free
- Double Fronted Period Home
- No Work Required
- Off- Street Parking
- Sought After Location
- Two Bathrooms



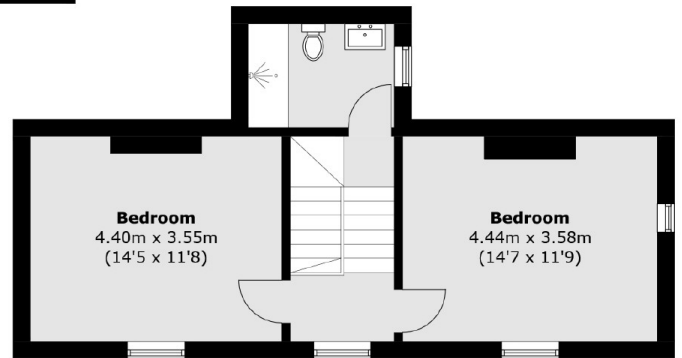




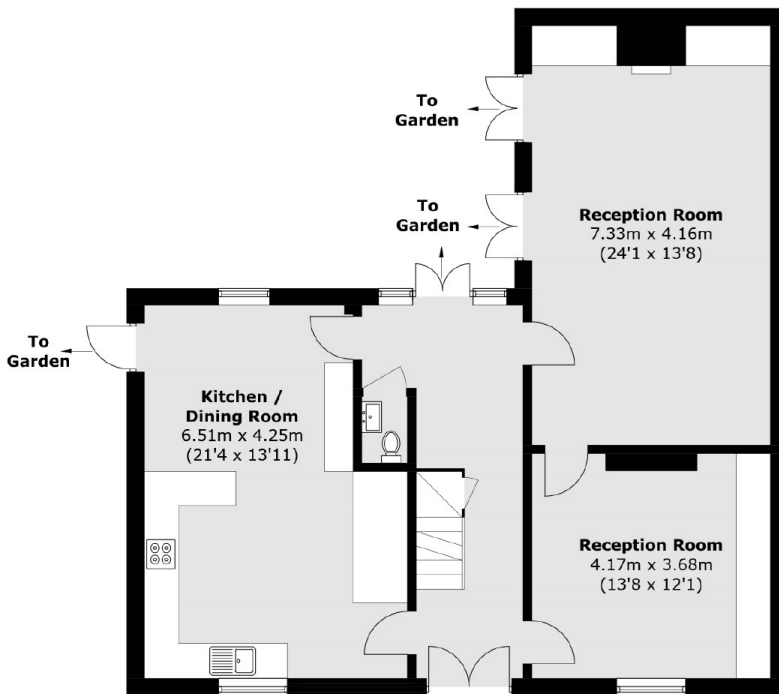
Roan Street,
London, SE10



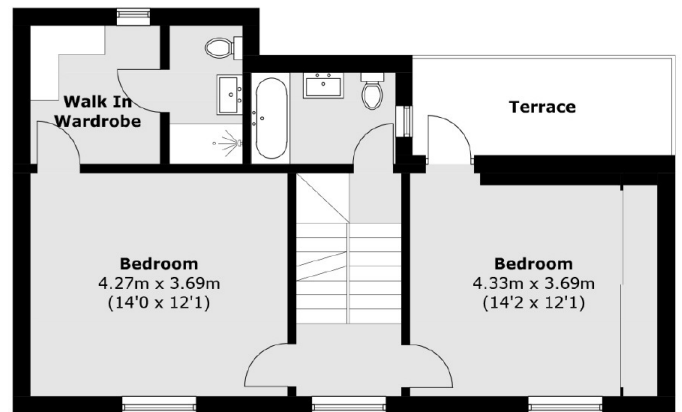
Basement



Second Floor



Ground Floor



First Floor

Total area (approx.): 214.2 sq. m (2,305.7 sq. ft)
(Including Basement)
Terrace: 7.7 sq. m (82.9 sq. ft)