



**14 Grenville Close, Gloucester, GL3 1LY**

**£1,200 Per Month**

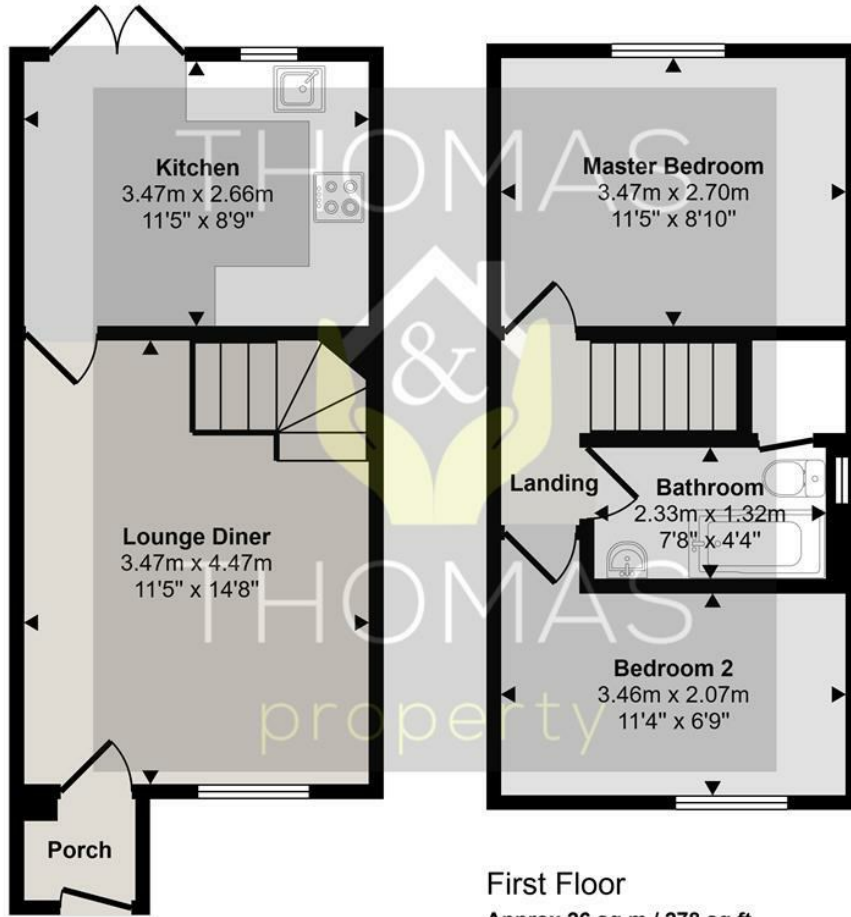
A well presented two bedroom house located within a quiet cul de sac on the Highgrove Estate, Churchdown with driveway parking and available to move into now!

Briefly comprising of entrance hall leading to the good sized lounge, a modern kitchen with integrated oven and washing machine. Upstairs there are two double bedrooms with a family bathroom consisting of shower over bath.

To the rear is a good size wrap around walled garden with side access leading to the driveway.

- Two bedroom house
- Driveway parking
- Good sized garden
- Modern kitchen & bathroom
  - Quiet location
  - Available NOW

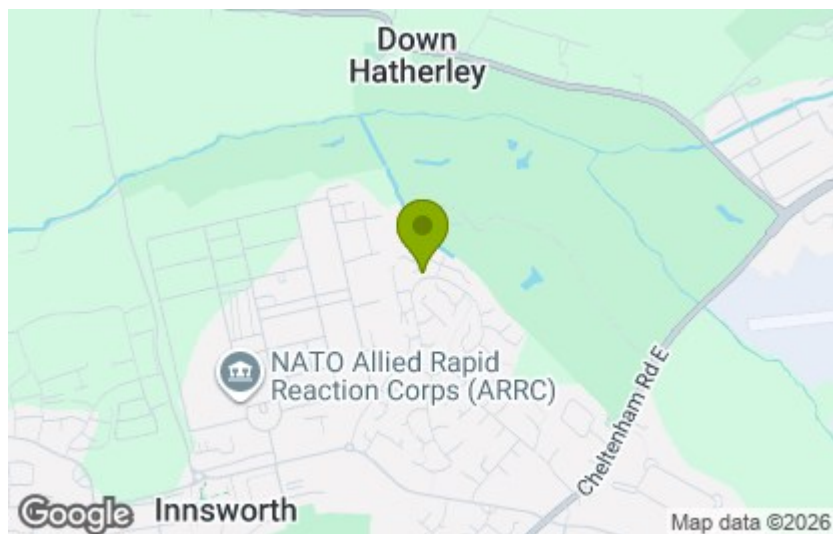
Approx Gross Internal Area  
52 sq m / 564 sq ft



This floorplan is only for illustrative purposes and is not to scale. Measurements of rooms, doors, windows, and any items are approximate and no responsibility is taken for any error, omission or mis-statement. Icons of items such as bathroom suites are representations only and may not look like the real items. Made with Made Snappy 360.

Energy Efficiency Rating		Current	Potential
Very energy efficient - lower running costs			
(92 plus) <b>A</b>			
(81-91) <b>B</b>			
(69-80) <b>C</b>			
(55-68) <b>D</b>			
(39-54) <b>E</b>			
(21-38) <b>F</b>			
(1-20) <b>G</b>			
Not energy efficient - higher running costs			
<b>England &amp; Wales</b>	EU Directive 2002/91/EC		

Environmental Impact (CO <sub>2</sub> ) Rating		Current	Potential
Very environmentally friendly - lower CO <sub>2</sub> emissions			
(92 plus) <b>A</b>			
(81-91) <b>B</b>			
(69-80) <b>C</b>			
(55-68) <b>D</b>			
(39-54) <b>E</b>			
(21-38) <b>F</b>			
(1-20) <b>G</b>			
Not environmentally friendly - higher CO <sub>2</sub> emissions			
<b>England &amp; Wales</b>	EU Directive 2002/91/EC		



These particulars, whilst believed to be accurate are set out as a general outline only for guidance and do not constitute any part of an offer or contract. Intending purchasers should not rely on them as statements of representation of fact, but must satisfy themselves by inspection or otherwise as to their accuracy. No person in this firm's employment has the authority to make or give any representation or warranty in respect of the property.