

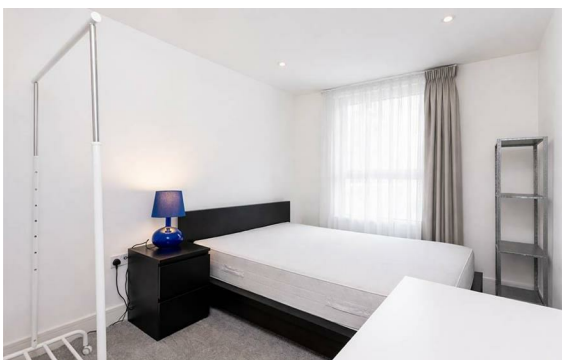
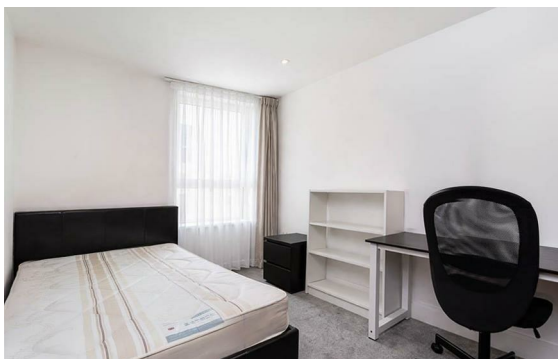
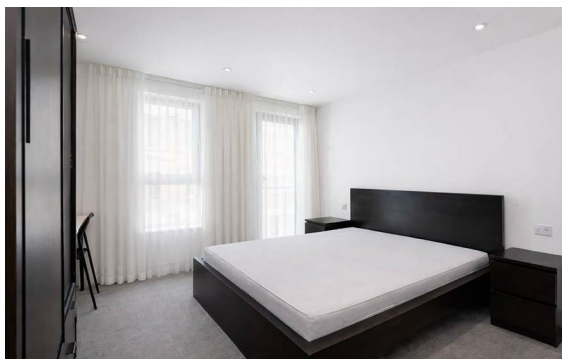


Church Street Estate, St John's Wood, London, NW8

Rent £830 Per Month

3 Bed | 1 Bath | 1 Reception

Please call us on 020 7724 2233 or email us info@newingtonstates.com to book a viewing.



60 Upper Montagu Street

London

W1H 1SN

020 7724 2233

info@newingtonstates.com

Bright and spacious apartment in a central location. A well-proportioned three-bedroom apartment offering generous living space, ideal for families or sharers. The property features a large reception with dining area, a separate fully fitted kitchen, three good-sized bedrooms, and a family bathroom with separate WC. High ceilings and excellent natural light enhance the sense of space throughout.

Ideally located close to Edgware Road, with excellent transport links via Edgware Road Station.

EPC Rating: C

Energy Efficiency Rating: C

Agents Note: Whilst every care has been taken to prepare these particulars, they are for guidance purposes only. All measurements are approximate and are for general guidance purposes only and whilst every care has been taken to ensure their accuracy, they should not be relied upon and potential buyers/tenants are advised to recheck the measurements.

<http://www.newingtonstates.com>