



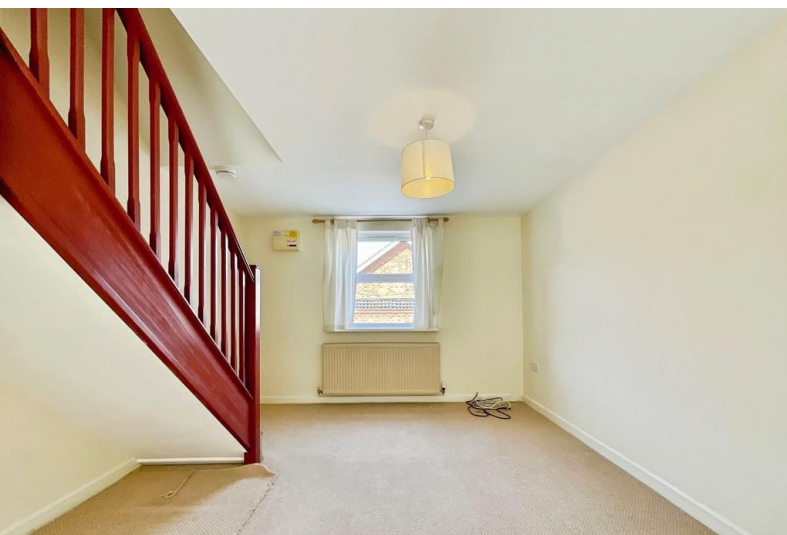
3 Princess Mews

Princess Street, Lincoln, LN5 7QH

£850 pcm

EARLY VIEWING RECOMMENDED!

The property briefly comprises of an Open Plan Kitchen and Living Accommodation with downstairs WC, with stairs rising to the First Floor Landing providing access to Two Bedrooms and a Family Bathroom with shower over the bath.



3 Princess Mews, Princess Street, Lincoln, LN5 7QH

LOCATION

Princess Mews is situated just off Princess Street within Lincoln City Centre, offering immediate access to a wide range of amenities including shops, supermarkets, cafes, restaurants and leisure facilities. The property is conveniently located for Lincoln Central Railway Station and the University of Lincoln, as well as excellent public transport links and access to the wider road network.

ACCOMMODATION

This well presented Two Bedroom Home offers modern and practical accommodation throughout. The internal layout comprises of a downstairs WC and Open Plan Kitchen leading into the Living Accommodation. Stairs rise to the First Floor Landing where there is Bedroom One, a double room, Bedroom Two, a generous single room, and a Family Bathroom fitted with a shower over the bath.

OUTSIDE

The property benefits from a shared gated courtyard to the front. Parking is available on street only within the surrounding area.

RENT & DEPOSIT

The asking Rent for the property is £850.00 per calendar month and the Tenancy Deposit is £980.00 (equal to 5 weeks' rent).

The Holding Deposit for this property is £195.00.

ASSURED PERIODIC TENANCY

The property will be let on an assured periodic tenancy (rolling monthly). The landlord is seeking a tenant for longer-term occupation.

ADDITIONAL FEES

There are no application fees payable. You will be required to pay a Holding Deposit equal to one weeks rent to secure the property. More information on charges to Tenants can be found on our website - <https://mundys.net/additional-fees/>

VIEWING

By prior appointment through Mundys.

THE RENTERS RIGHTS ACT 2025

New legislation was implemented in May 2026 and affects existing and new tenancies. More information on the changes is available at: <https://www.gov.uk/government/publications/guide-to-the-renters-rights-act/guide-to-the-renters-rights-act>

- Walking Distance to City Centre
- Open Plan Living and Kitchen
- Secure Gated Courtyard
- On street Parking
- Two Bedrooms
- Early Viewing Recommended
- Gas Central Heating
- Energy Performance Rating - C
- Council Tax Band - A (Lincoln City Centre)
- Bathroom with Shower over Bath



Agents Note: Whilst every care has been taken to prepare these sales particulars, they are for guidance purposes only. All measurements are approximate and for general guidance purposes only and whilst every care has been taken to ensure their accuracy, they should not be relied upon and potential buyers are advised to recheck the measurements.

Museum Court
Grantham Street
Lincoln
LN2 1JB

www.mundys.net
lettings@mundys.net
01522 556 099

