



Apt 58 Quay West, Bridge Road, Douglas, Isle of Man, IM1 5AG  
Asking Price £359,950





- **Luxury Purpose-Built Apartment In Prestigious Riverside Development**
- **Open-Plan Living, Dining, And Kitchen Opening To Sun Terrace**
- **Convenient Location Near Restaurants, Bars, Superstore, And City Centre**
- **Two Double Bedrooms With Fitted Wardrobes And Ensuite Bathroom**
- **High-End Fixtures With Miele Appliances And Underfloor Heating Throughout**
- **Allocated Parking Space And Offered With No Onward Chain**



## Apt 58 Quay West, Bridge Road, Douglas, Isle of Man, IM1 5AG

A stunning luxury apartment situated within one of the island's most prestigious riverside and quayside developments, this purpose-built residence combines contemporary design with exceptional comfort and convenience. Ideally positioned within easy walking distance of the city centre, Athol Street's business district, and an excellent selection of local restaurants, bars, and a major superstore, this apartment offers a lifestyle of ease and sophistication.

Designed and finished to the highest standards, the property features premium fixtures and fittings throughout, including Miele integrated appliances and underfloor heating for year-round comfort. The impressive open-plan living, dining, and kitchen area creates a welcoming and versatile space, perfect for both everyday living and entertaining. From here, and from the principal bedroom, double doors open onto a generous sun terrace, providing an ideal spot for relaxing or hosting guests while enjoying views across the river.

The apartment comprises two spacious double bedrooms. The principal bedroom benefits from a luxurious ensuite bathroom, while a second stylish guest bathroom serves the remainder of the home.

Additional features include an allocated private parking space within the development and the advantage of being offered for sale with no onward chain, allowing for a smooth and straightforward purchase.

Combining elegant design, superior quality, and an unrivalled location, this exceptional apartment represents a rare opportunity to acquire a contemporary riverside home that offers both luxury and convenience in equal measure.

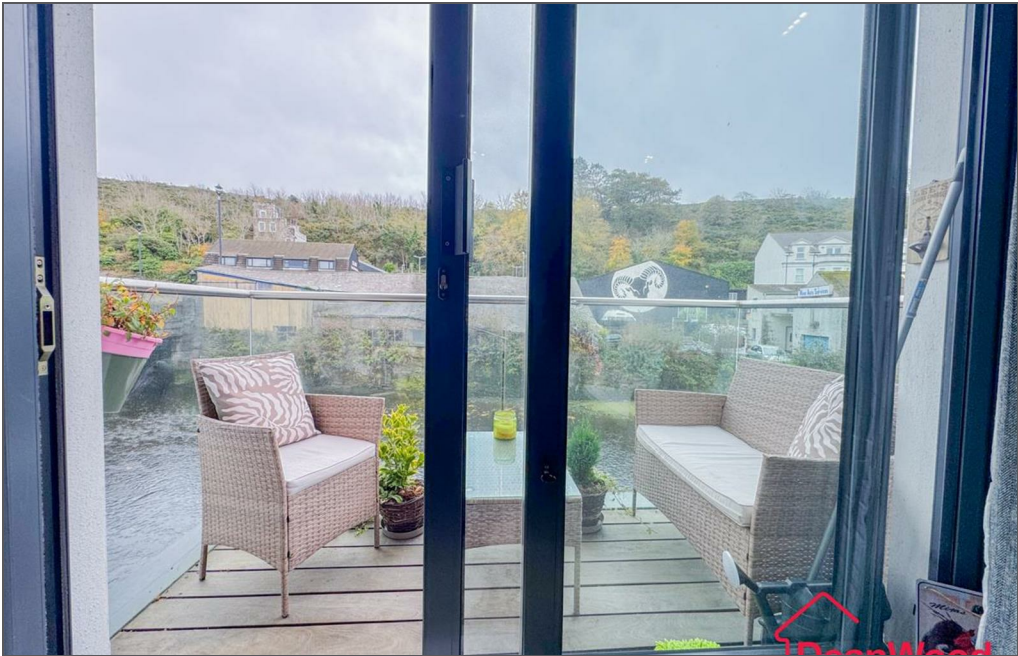




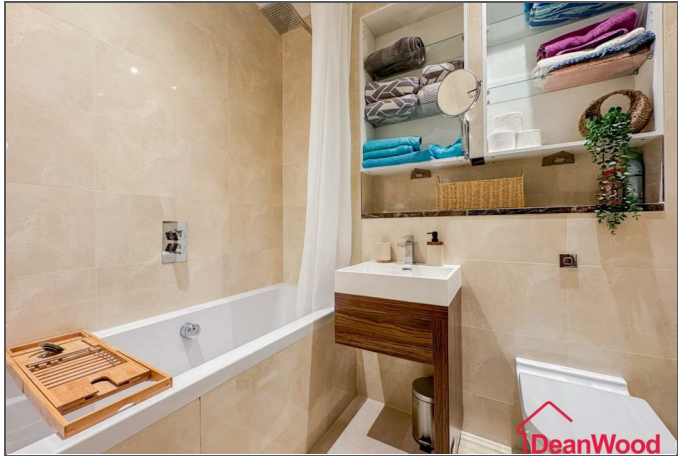








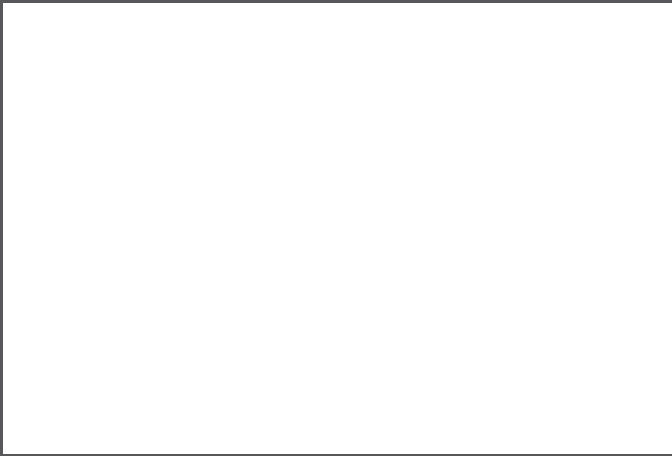




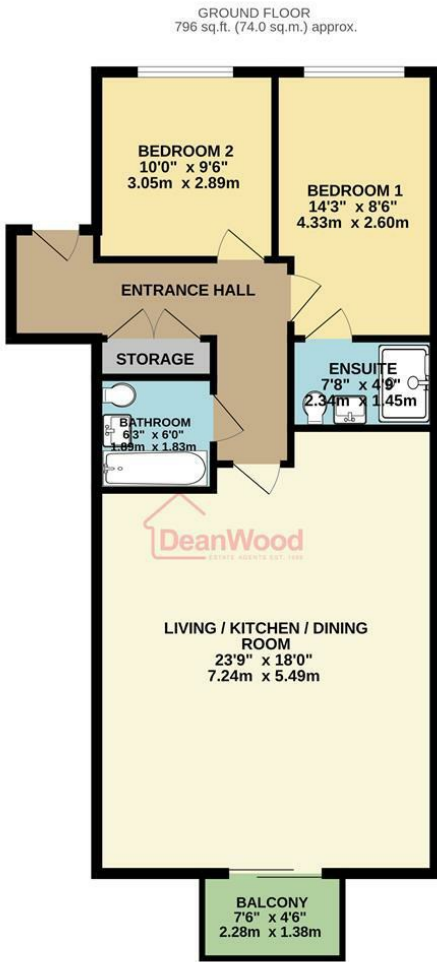












TOTAL FLOOR AREA : 796 sq.ft. (74.0 sq.m.) approx.  
Not to scale-for identification purposes only  
Made with Metropix ©2025



**DOUGLAS**  
37 VICTORIA STREET  
DOUGLAS  
ISLE OF MAN IM1 2LF  
**T** 01624 620606  
**F** 01624 677363  
**E** info@deanwood.co.im

**CASTLETOWN**  
COMPTON HOUSE  
9 CASTLE STREET CASTLETOWN  
ISLE OF MAN IM9 1LF  
**T** 01624 825995  
**F** 01624 825996  
**E** castletown@deanwood.co.im

**RAMSEY**  
LEZAYRE HOUSE  
87 PARLIAMENT STREET  
RAMSEY ISLE OF MAN IM8 1AQ  
**T** 01624 816111  
**F** 01624 816588  
**E** ramsey@deanwood.co.im

These particulars are for information purposes only. They do not constitute or form any contract nor should any statement contained herein be relied upon as a representation of fact. Neither the vendor nor DeanWood Agencies Limited ('the firm'), nor any officer or employee of the firm accept liability or responsibility for any statement contained herein. The vendor does not by these particulars, nor does the firm, nor does any officer or any employee of the firm have any authority to make or give any representation or warranty whatsoever as regards the property or otherwise. It is the sole responsibility of any person interested in the property described in these particulars to make all proper enquiries and searches to verify the description of the property and all other particulars herein.

FOR MORE PROPERTIES VISIT OUR WEBSITE @ **deanwood.im**