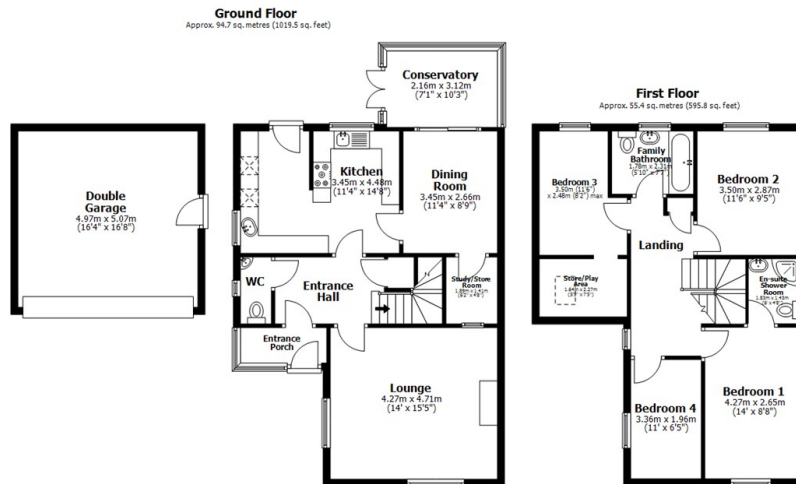




5 Turnbury Close, Lincoln, LN6 0FE

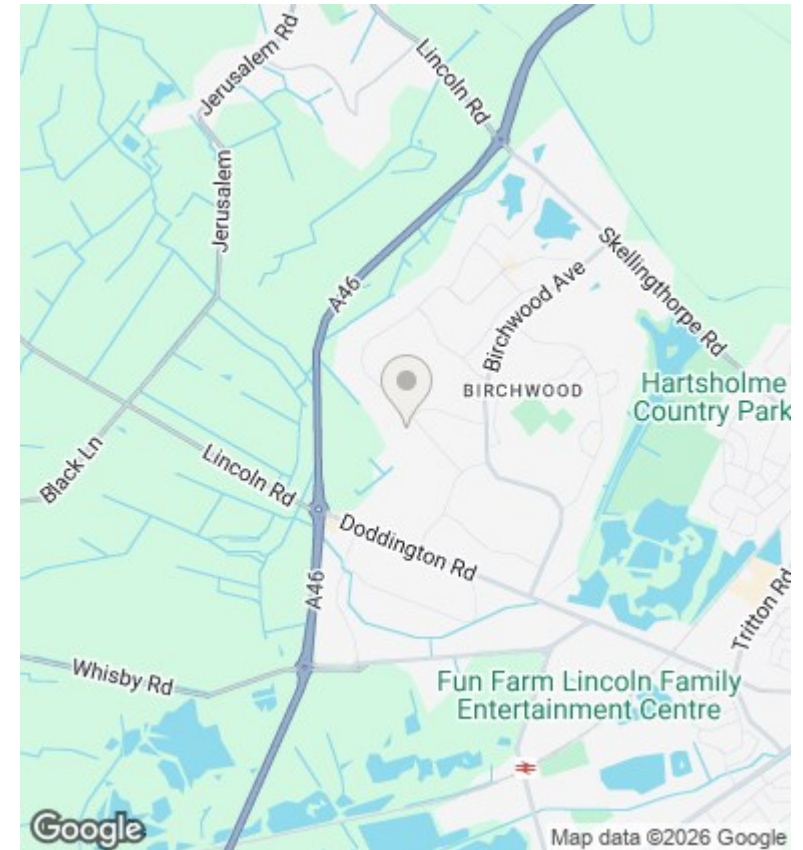
Asking Price £375,000

- Spacious 4 Bedroom House
- Large Low Maintenance Garden
- Two Reception Rooms
- Ensuite Shower to Master Bedroom
- Double Garage
- Conservatory
- Close to Schools and Amenities
- Well Presented Throughout
- EPC Rating C
- Council Tax Band C



Total area: approx. 150.1 sq. metres (1615.3 sq. feet)

This plan is for layout guidance only. Not drawn to scale unless stated. Windows and door openings are approximate. Whilst every care is taken in the preparation of this plan, please check all dimensions, shapes and any compass bearings before making any decisions reliant upon them. All interested parties must verify their accuracy independently. Plan produced using Planity.



Directions

Viewings

Viewings by arrangement only. Call 01522 396059 to make an appointment.

Council Tax Band

C

EPC Rating:

C

Energy Efficiency Rating		Current	Potential
Very energy efficient - lower running costs			
(92 plus) A			
(81-91) B			
(69-80) C		70	74
(55-68) D			
(39-54) E			
(21-38) F			
(1-20) G			
Not energy efficient - higher running costs			
England & Wales		EU Directive 2002/91/EC	