



77 Sanforth Street, Whittington Moor, Chesterfield, S41 8RS

- TWO BEDROOMS
- IDEAL LOCATION
- SOUTH FACING GARDEN
- TERRACED HOUSE
- FIRST TIME BUYER HOME
- VIEW NOW

Offers In The Region Of £150,000

HUNTERS®
HERE TO GET *you* THERE

IDEAL LOCATION - PERFECT FIRST TIME BUYER HOME TO GET YOU ON THE PROPERTY LADDER - TWO BEDROOM TERRACE HOUSE WITH SOUTH FACING GARDEN!

In a superb location for all Chesterfield, Sheffield, M1 J29, all local amenities (including pharmacy, hairdressers, florists, butchers & more!) along Sheffield Road, the modern units at The Glass Yard, supermarkets, Chesterfield FC stadium, Chesterfield Canal, within easy access of Chesterfield Train Station & Town Centre.

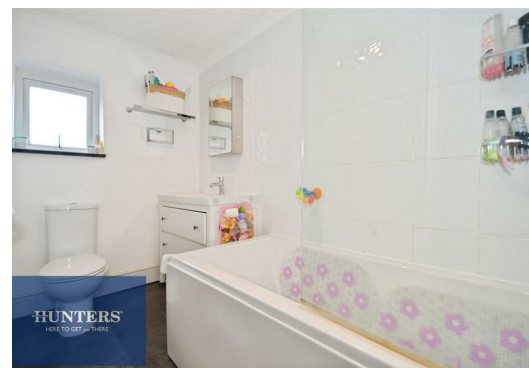
Well presented throughout, the property comprises:- front lounge with log burning fire, cottage style kitchen / diner with stairs down to cellar.

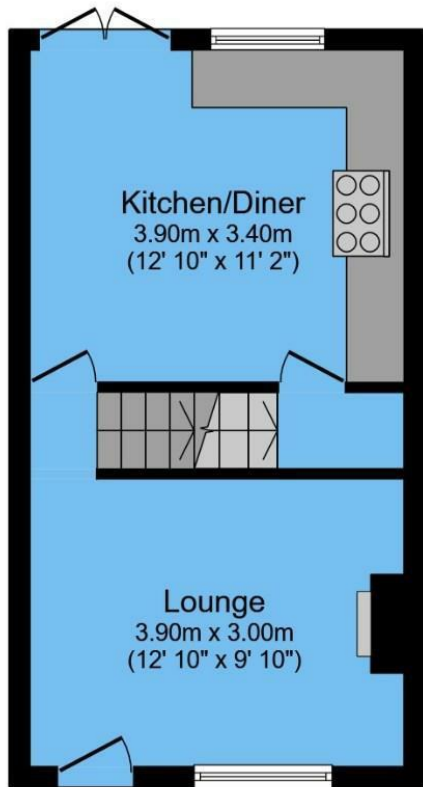
On the first floor you have the main double bedroom with wardrobe, second bedroom & combined bathroom / WC with shower over bath.

Externally the property has on road parking & SOUTH FACING rear garden designed for low maintenance with summer house.

BOOK YOUR VIEWING NOW - CALL HUNTERS!

FREEHOLD | COUNCIL TAX BAND A





Ground Floor



First Floor

ENERGY PERFORMANCE CERTIFICATE

The energy efficiency rating is a measure of the overall efficacy of a home. The higher the rating the more energy efficient the home is and the lower the fuel bills will be.

Energy Efficiency Rating		Current	Potential
Very energy efficient - lower running costs			
(92 plus) A			
(81-91) B			85
(69-80) C		67	
(55-68) D			
(39-54) E			
(21-38) F			
(1-20) G			
Not energy efficient - higher running costs			
England & Wales		EU Directive 2002/91/EC	

These particulars are intended to give a fair and reliable description of the property but no responsibility for any inaccuracy or error can be accepted and do not constitute an offer or contract. We have not tested any services or appliances (including central heating if fitted) referred to in these particulars and the purchasers are advised to satisfy themselves as to the working order and condition. If a property is unoccupied at any time there may be reconnection charges for any switched off/disconnected or drained services or appliances - All measurements are approximate.

THINKING OF SELLING? If you are thinking of selling your home or just curious to discover the value of your property, Hunters would be pleased to provide free, no obligation sales and marketing advice. Even if your home is outside the area covered by our local offices we can arrange a Market Appraisal through our national network of Hunters estate agents

Total floor area 63.1 sq.m. (680 sq.ft.) approx

This floor plan is for illustrative purposes only. It is not drawn to scale. Any measurements, floor areas (including any total floor area), openings and orientation are approximate. No details are guaranteed, they cannot be relied upon for any purpose and they do not form part of any agreement. No liability is taken for any error, omission or misstatement. A party must rely upon its own inspection(s).

Powered by www.focalagent.com

Viewing

Please contact our Hunters Chesterfield Office on 01246 540540 if you wish to arrange a viewing appointment for this property or require further information.



Unit 4, The Glass Yard Sheffield Road, Chesterfield, S41 8JY

Tel: 01246 540540 Email:

Chesterfield@hunters.com <https://www.hunters.com>