



*jordan fishwick*

**DIDSBURY VILLAGE**  
Wilmslow Road



## Wilmslow Road, Didsbury Village, M20 2RB

£1,900 Per Calendar Month



### The Property

\*\*\* AVAILABLE JULY \*\*\* Jordan Fishwick are delighted to bring to the rental market a spacious, upper ground floor, modern two double bedroom, two-bathroom apartment in the enviable development of The Limes. Situated in the Heart of Didsbury, on the doorstep of Didsbury Park, local shops, bars and restaurants and Metrolink, it is ideally suited to a single occupant or professional couple. In brief the property comprises; entrance hall with storage/utility cupboard, open plan lounge/ dining/ kitchen area with all built in appliances and double doors leading onto Juliet balcony. Two double bedrooms with the master benefitting from en-suite shower room and a further bathroom with a three-piece suite with shower over bath. The property benefits from modernised electric heating, parking spaces for two cars and EV charging points available for use. Offered on an unfurnished basis. Contact our Didsbury office to arrange a viewing.

View our Virtual Tour Here - <https://youtu.be/9CD9IU2RiUM>

EPC Rating - B // Council Tax Band - D

### Directions

M20 2RB



Google

Map data ©2026 Google

- Available July
- Two Double Bedrooms
- Two Bathrooms
- Unfurnished
- Modern in Design Throughout
- Ideal for Single Occupants or Couples
- Didsbury Village Location
- Two Parking Spaces
- Council Tax Band D
- EPC Rating B

Postcode - M20 2RB

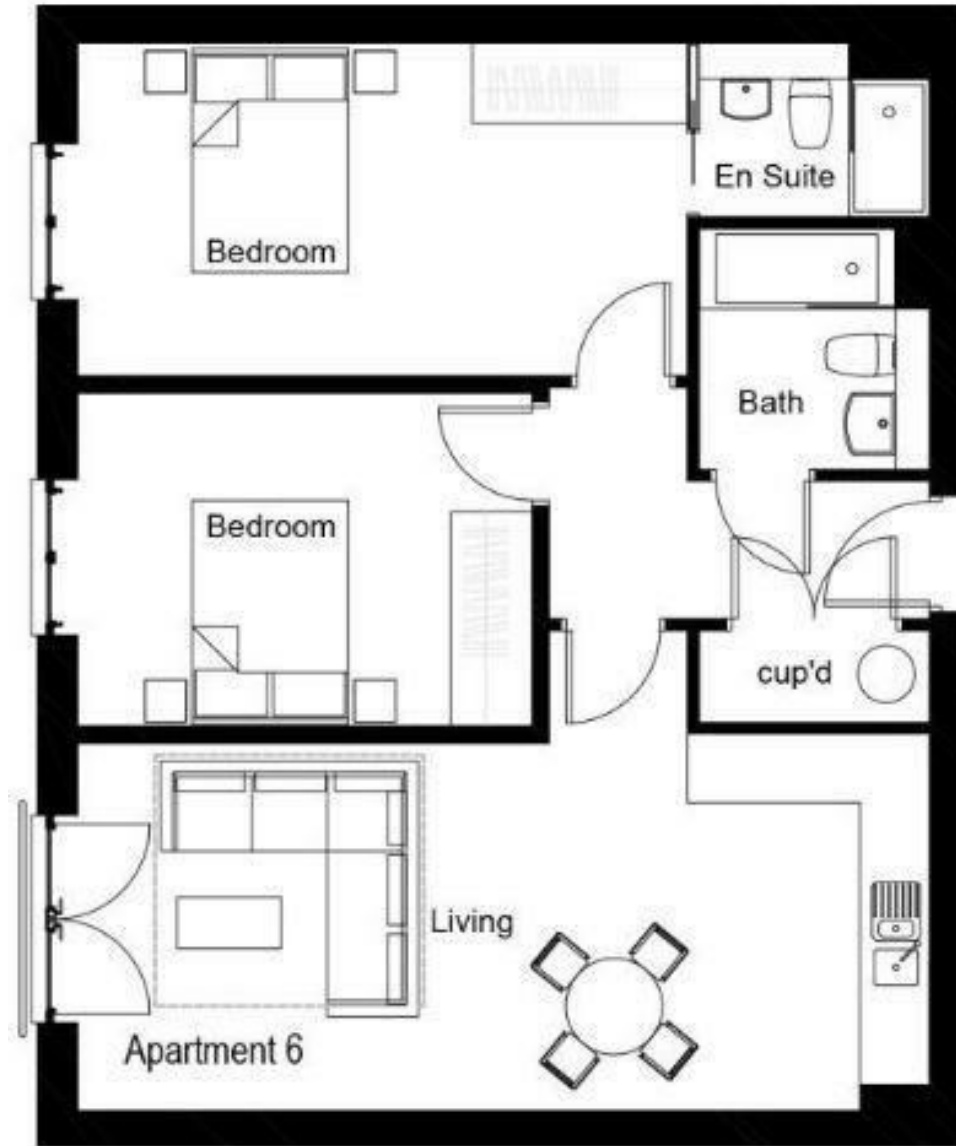
EPC Rating - B

Floor Area - sq ft

Local Authority - Manchester

Council Tax - D





These particulars are believed to be accurate but they are not guaranteed and do not form a contract. Neither Jordan Fishwick nor the vendor or lessor accept any responsibility in respect of these particulars, which are not intended to be statements or representations of fact and any intending purchaser or lessee must satisfy himself by inspection or otherwise as to the correctness of each of the statements contained in these particulars. Any floorplans on this brochure are for illustrative purposes only and are not necessarily to scale.

Offices also at: Wilmslow, Macclesfield, Hale, Sale, Chorlton, Glossop, Manchester & Salford

757-759 Wilmslow Road, Didsbury Village, Manchester

0161 445 4480

didsbury@jordanfishwick.co.uk  
www.jordanfishwick.co.uk