

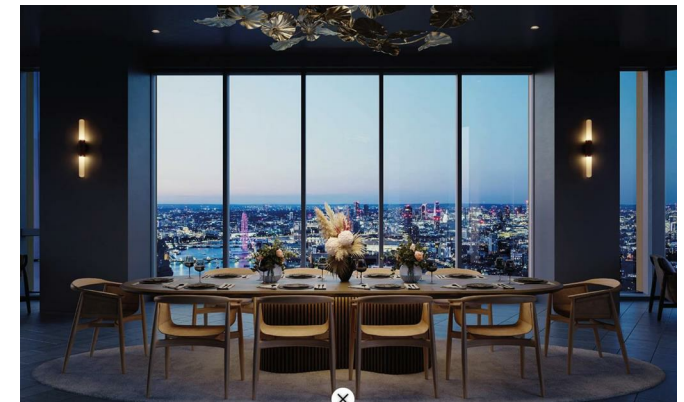


1 Nine Elms Lane

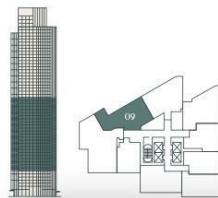
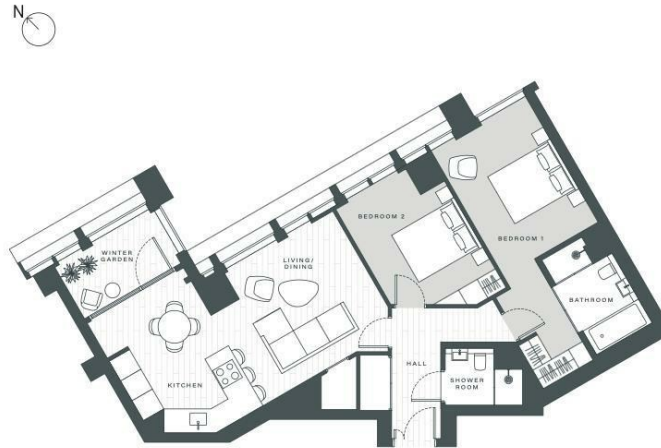
, London SW8 5HD

- Near Vauxhall & Nine Elms Station
 - 50th-Floor Sky Lounge
 - Gym
 - Winter Garden
 - EPC-B
- 24-Hour Concierge
- Residents' Lounge
- Meeting Rooms
- Cinema Room
 - CTB-F

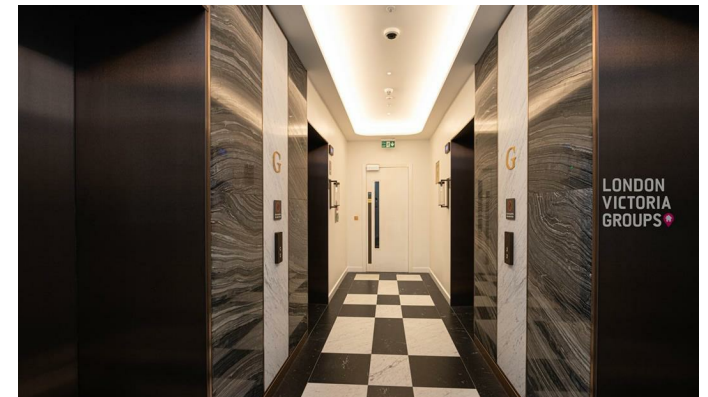
£6,800 Per Month



Local Authority **Wandsworth**
 Council Tax Band **F**
 EPC Rating **B**



TOTAL AREA	89.2 SQ M	960 SQ FT
Living/Dining/Kitchen	7.48m x 3.8m	24'6" x 12'6"
Winter Garden	3.17m x 1.8m	10'5" x 5'11"
Bedroom 1	7.25m x 3.06m	23'9" x 10'0"
Bedroom 2	3.72m x 2.99m	12'2" x 9'10"



London Office Office
 Spaces Victoria, 25 Wilton Road, Pimlico,
 London, SW1V 1LW

Contact
 020 3084 3094
XL@londonvictoriagroups.co.uk
www.londonvictoriagroups.co.uk

Agents Note: Whilst every care has been taken to prepare these particulars, they are for guidance purposes only. All measurements are approximate and for general guidance purposes only and whilst every care has been taken to ensure accuracy, they should not be relied upon and potential buyers/tenants are advised to recheck the measurements.

LONDON
 VICTORIA
 GROUPS