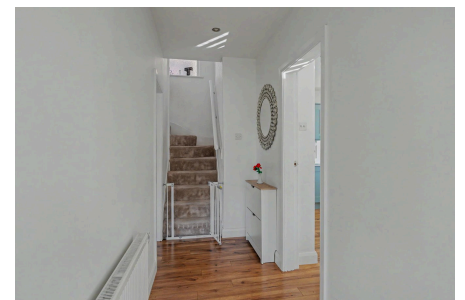
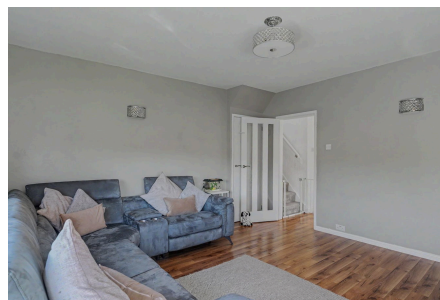
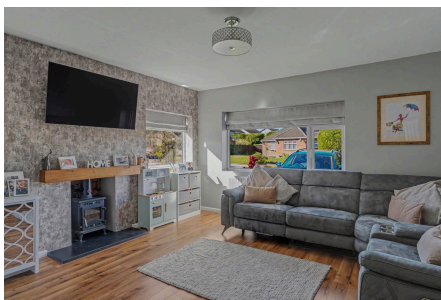
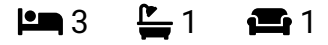


Littleshaw Lane, Wythall, Birmingham, B47 6EU

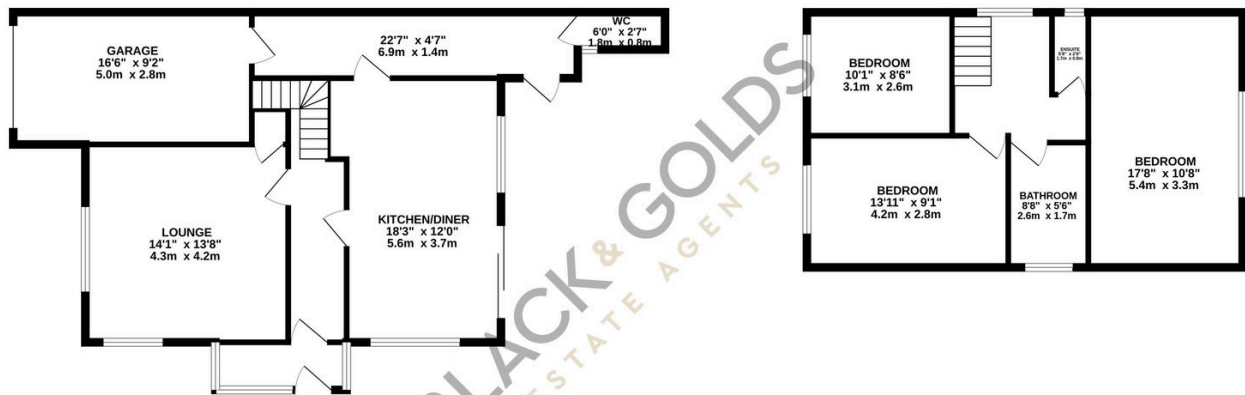
Offers Over £425,000



Situated on the popular Littleshaw Lane, Wythall, this well-proportioned three-bedroom link-detached family home offers spacious and versatile accommodation, ideal for modern living.

Key Features

- Three bedroom link-detached family home
- Spacious lounge to the front aspect
- Ground floor WC
- Family bathroom
- Garage and driveway parking
- Sought-after location on Littleshaw Lane, Wythall
- Generous kitchen diner ideal for family living
- Three well-proportioned bedrooms
- Outside office ideal for home working
- Close to local amenities, schools and transport links



TOTAL FLOOR AREA: 1305 sq.ft. (121.2 sq.m.) approx.

Whilst every attempt has been made to ensure the accuracy of the floorplan contained here, measurements of doors, windows, rooms and any other items are approximate and no responsibility is taken for any error, omission or mis-statement. This plan is for illustrative purposes only and should be used as such by any prospective purchaser. The services, systems and appliances shown have not been tested and no guarantee as to their operability or efficiency can be given.
Made with Metropix ©2025