



FOUNDATION

01227 752617

sales@foundationestateagents.co.uk

www.foundationestateagents.co.uk



13, Wytherling Close, Bearsted, Maidstone, ME14 4QB

4 BEDROOMS | 2 BATHROOMS | 2 RECEPTIONS

Freehold



13, Wytherling Close, Bearsted, Maidstone, ME14 4QB

- Desirable Detached Family Residence
- Open Plan Living Areas & Garden Room
- Recently Updated Bathrooms
- Almost 1500 Sq.Ft Of Accommodation
- A Versatile Converted Garage
- Four Bedrooms & Two Bathrooms
- South Facing Rear Garden
- Off Road Parking & Quiet Position

SITUATION:

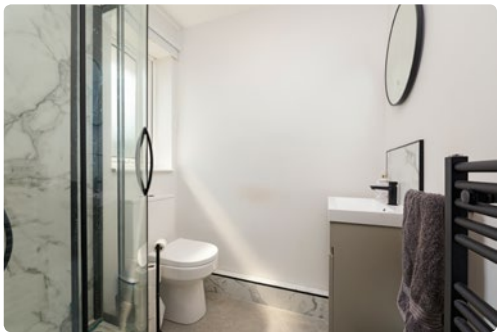
Bearsted is an idyllic Kentish village, centred around a picturesque green and flanked by fine period residences, traditional pubs such as The White Horse and The Oak on the Green, The Fish on the Green restaurant, and a selection of village shops, including the renowned Crouch Butchers. Other local amenities include a post office, express supermarket, library, doctor's surgery, petrol station, Bearsted Golf Club, Bearsted & Thurnham Tennis Club, and a mainline railway station offering a regular and direct service to London.

The village is surrounded by beautiful countryside, including the Bearsted Woodland Trust, and offers easy access to the North Downs and the Pilgrims Way—ideal for those who enjoy walking and other outdoor pursuits. For equestrian enthusiasts, there are nearby stables, livery yards, and extensive bridleways.

The neighbouring village of Leeds is home to the historic Leeds Castle. Set within over 500 acres of stunning parkland, this 900-year-old castle—often referred to as "the loveliest castle in the world"—attracts visitors from across the globe.

For a broader range of amenities, the nearby county town of Maidstone offers extensive shopping, educational, and leisure facilities, including several grammar schools, the Fremlin Walk Shopping Centre, three railway stations, and a hospital.

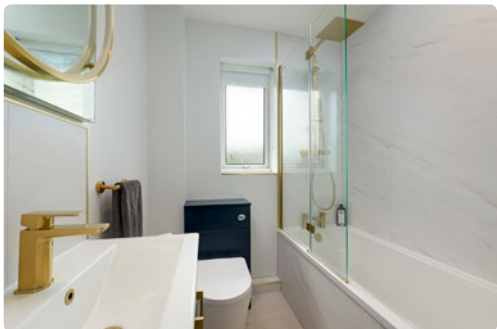
Bearsted Station provides a direct rail link to London, while nearby Junction 7 of the M20 offers excellent road access to both the capital and the coast.



DESCRIPTION:

A four-bedroom detached residence with a south-facing rear garden, ideally positioned within Wythering Close in the sought-after village of Bearsted.

Offering almost 1,500 sq. ft. of spacious and versatile accommodation, the property includes a converted garage currently utilised as a ground-floor bedroom, although it could equally serve as an additional reception room or home office.



The current owners have recently undertaken a number of tasteful aesthetic improvements, including the installation of two beautifully updated bathrooms featuring brushed brass fittings. There remains excellent scope for further enhancement and modernisation, allowing a purchaser the opportunity to add their own style and creativity.

The front door opens into a spacious entrance hall with cloakroom and stairs rising to the first floor. To the right is an open-plan

kitchen/dining room, thoughtfully designed to create distinction between the cooking and dining areas via a large peninsula breakfast bar with pendant lighting above. The kitchen is fitted with an extensive range of wall and base units incorporating integrated appliances including a gas hob, extractor hood, double oven and dishwasher. This space flows through to a useful utility area/garden lobby.

On the opposite side of the peninsula is the dining area, which links seamlessly to the garden room, creating an excellent space for entertaining and family living.

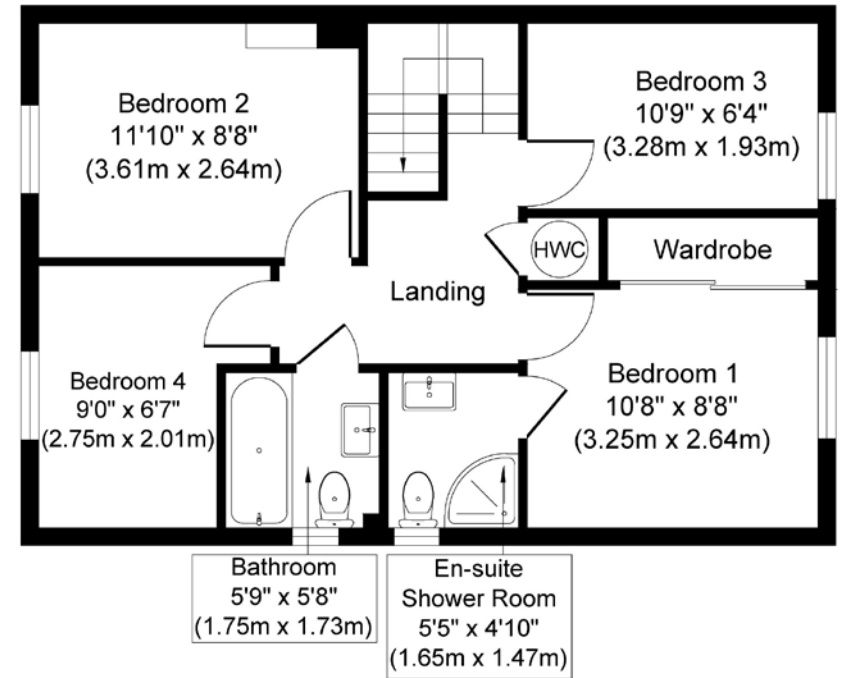
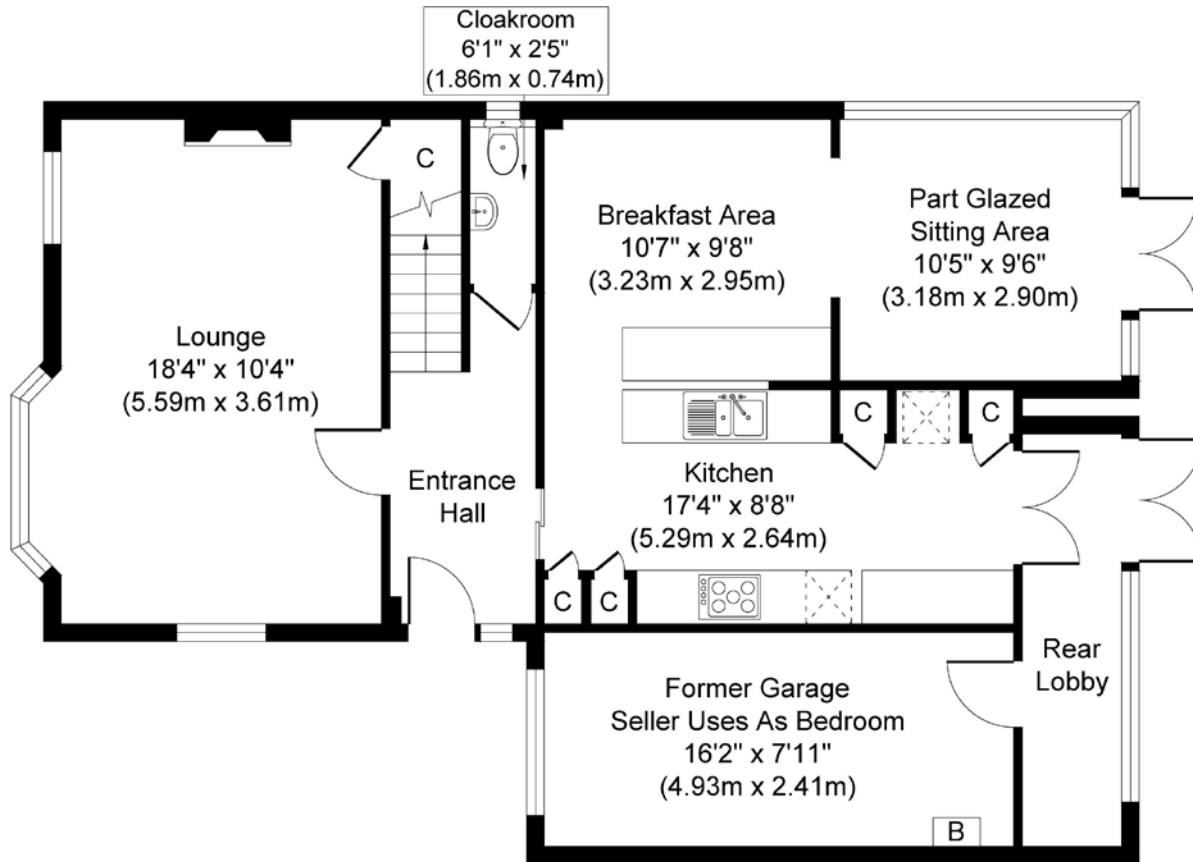
The dual-aspect sitting room is a beautifully bright space, flooded with natural light from the bay window. A fireplace with an intricate mantel provides an attractive focal point, whilst the wood-effect flooring adds a contemporary Scandinavian-inspired feel. The ground floor is completed by the converted garage, currently arranged as a double bedroom, though it also offers

potential to be incorporated into the kitchen to create a larger open-plan living space, subject to requirements.

To the first floor are four bedrooms and a beautifully appointed family bathroom, recently refitted with contemporary sanitary ware and elegant brushed brass fixtures and fittings. The principal bedroom benefits from fitted wardrobes and an en-suite shower room finished in a similar style to the family bathroom.

OUTSIDE:

The south-facing rear garden is of a generous size and provides excellent space for alfresco dining and entertaining, with both a decked seating area and patio terrace leading onto an expanse of lawn enclosed by mature hedging, ensuring a high degree of privacy and tranquillity. A further gravelled seating area is enclosed with a charming picket fence. To the front of the property, the driveway provides off-road parking for several vehicles.



TOTAL FLOOR AREA: 1454 sq. ft (135 sq. m)



EPC RATING
D



COUNCIL TAX BAND
D



GENERAL INFORMATION
All services are mains connected

Suite 1, 2nd Floor, 3 Jubilee Way, Faversham, Kent ME13 8GD

01227 752617 | sales@foundationestateagents.co.uk | www.foundationestateagents.co.uk

We endeavour to make our sales particulars accurate and reliable, however, they do not constitute or form part of an offer or any contract and none is to be relied upon as statements of representation or fact. Any services, systems and appliances listed in this specification have not been tested by us and no guarantee as to their operating ability or efficiency is given. All measurements, floor plans and site plans are a guide to prospective buyers only, and are not precise. Fixtures and fittings shown in any photographs are not necessarily included in the sale and need to be agreed with the seller. Foundation Estate Agents is a trading name of Foundation Property Services (Kent) Limited. Registered in England and Wales No. 7139236. Registered Address: Suite 1, 2nd Floor, 3 Jubilee Way, Faversham, Kent ME13 8GD.

