



## Flat 3, 15 Chandos Terrace, Leeds, Yorkshire, LS8 1QT

Available 23rd June 2026

A fully furnished, bright and modern one bedroom apartment in ever-popular Roundhay.

Recently refurbished, this stylish and comfortable property comprises a spacious open plan living room/kitchen with integrated units, a double bedroom and house bathroom complete with bath and shower over.

Chandos Terrace is a quiet cul-de-sac less than one mile from Roundhay Park and Street Lane, with regular buses departing from adjoining Lidgett Lane. On street parking is available.

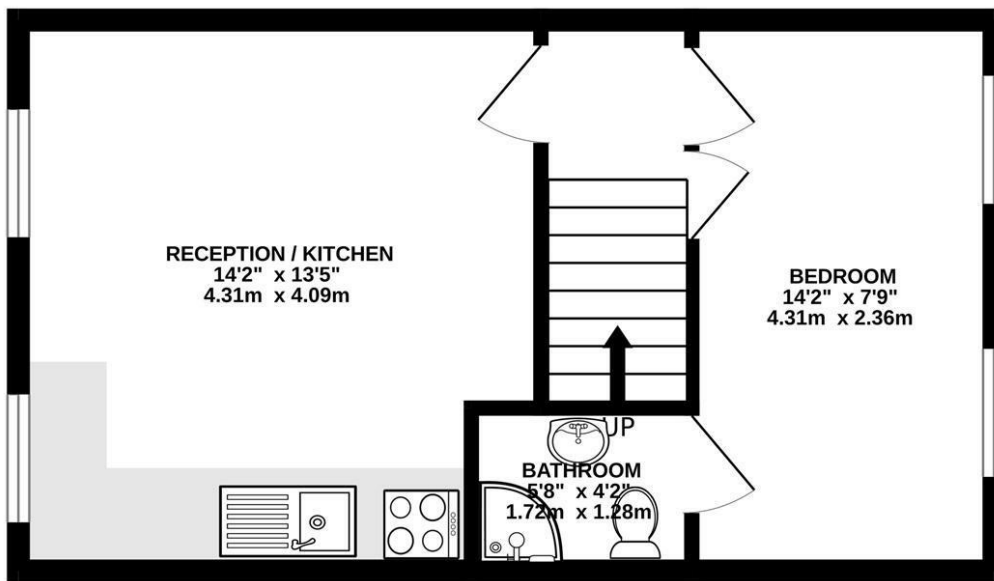
Gas, water and central heating are included for an additional £75pcm.

- One Bedroom
- Second Floor
- Excellent Location
- On Street Parking
- Close to Transport
- Quiet Cul-De-Sac

**£750 Per month**

[www.fletcherprops.com](http://www.fletcherprops.com)

## GROUND FLOOR 354 sq.ft. (32.9 sq.m.) approx.



TOTAL FLOOR AREA : 354 sq.ft. (32.9 sq.m.) approx.

Whilst every attempt has been made to ensure the accuracy of the floorplan contained here, measurements of doors, windows, rooms and any other items are approximate and no responsibility is taken for any error, omission or mis-statement. This plan is for illustrative purposes only and should be used as such by any prospective purchaser. The services, systems and appliances shown have not been tested and no guarantee as to their operability or efficiency can be given.  
Made with Metropix ©2025

Energy Efficiency Rating		Current	Potential
Very energy efficient - lower running costs			
(92 plus) A			
(81-91) B			
(69-80) C			
(55-68) D		64	64
(39-54) E			
(21-38) F			
(1-20) G			
Not energy efficient - higher running costs			
England & Wales		EU Directive 2002/91/EC	

Environmental Impact (CO <sub>2</sub> ) Rating		Current	Potential
Very environmentally friendly - lower CO <sub>2</sub> emissions			
(92 plus) A			
(81-91) B			
(69-80) C			
(55-68) D		62	62
(39-54) E			
(21-38) F			
(1-20) G			
Not environmentally friendly - higher CO <sub>2</sub> emissions			
England & Wales		EU Directive 2002/91/EC	