

1 Hillcrest Caravan Site, Manor Road, Woodside, LU1 4DP  
£188,500

**ROBINSONS**





STUNNING COUNTRYSIDE VIEWS | CASH BUYERS ONLY | £219.56 PITCH FEE PER MONTH

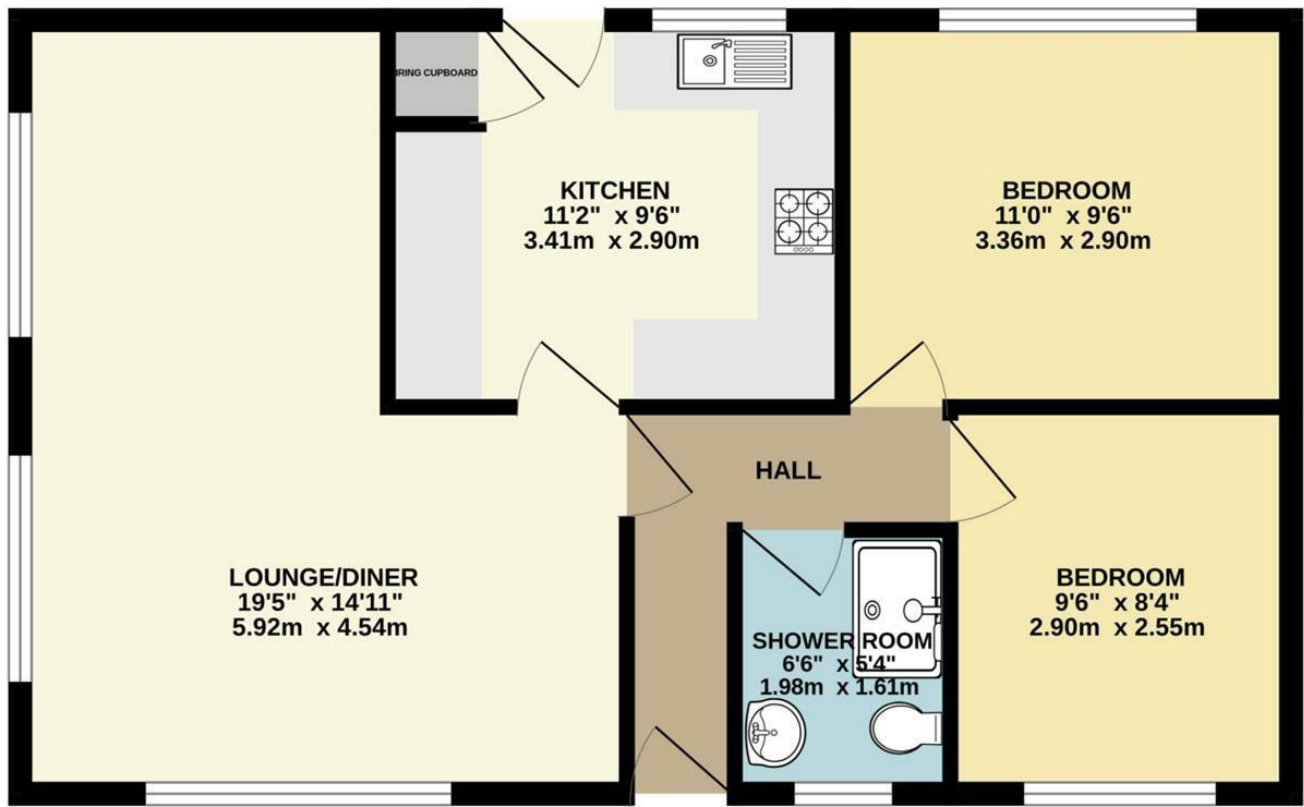
A well-maintained two-bedroom park home positioned in one of the most desirable spots on Hillcrest in Caddington, offered to cash buyers only. The property enjoys far-reaching views over open farmland, giving a real sense of peace and privacy, with gated pin-code access to the development.

The home is bright and welcoming throughout. The spacious lounge is perfectly placed to make the most of the outlook, and the modern kitchen provides plenty of storage and workspace. Both bedrooms are a good size, with the main bedroom benefiting from fitted wardrobes, and a contemporary shower room completes the accommodation.

Outside, there is a private, low-maintenance rear garden along with driveway parking. The current pitch fee is £219.56 per month. Hillcrest is a quiet and friendly residential park just a short distance from Caddington village, offering easy access to local amenities, as well as Luton, Dunstable and major transport links.

An ideal opportunity for anyone seeking a peaceful and secure setting with countryside views.

GROUND FLOOR  
594 sq.ft. (55.2 sq.m.) approx.



20 West Street  
Dunstable  
Bedfordshire  
LU6 1SX

01582 661112

[sales@robinsons-estates.co.uk](mailto:sales@robinsons-estates.co.uk)

<https://www.robinsons-estates.co.uk>



Energy Efficiency Rating		
	Current	Potential
Very energy efficient - lower running costs		
(92 plus) A		
(81-91) B		
(69-80) C		
(55-68) D		
(39-54) E		
(21-38) F		
(1-20) G		
Not energy efficient - higher running costs		
England & Wales		EU Directive 2002/91/EC