

SCOTT &  
STAPLETON

THE LOFTS  
Westcliff-On-Sea, SS0 9LD  
£800 Per Month





## THE LOFTS

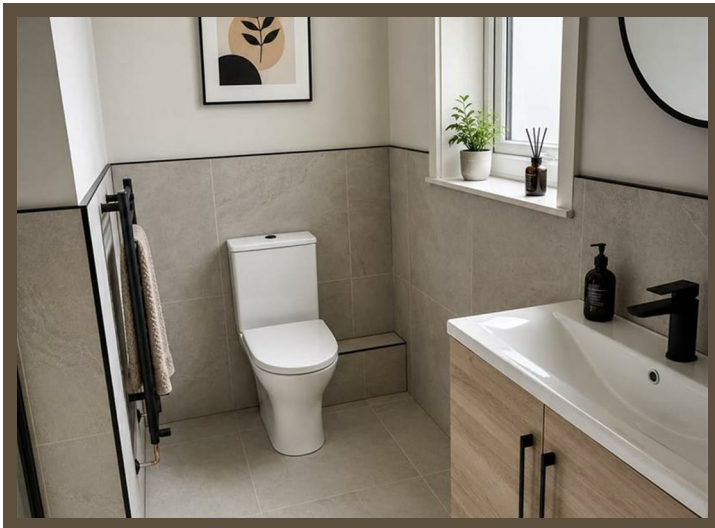
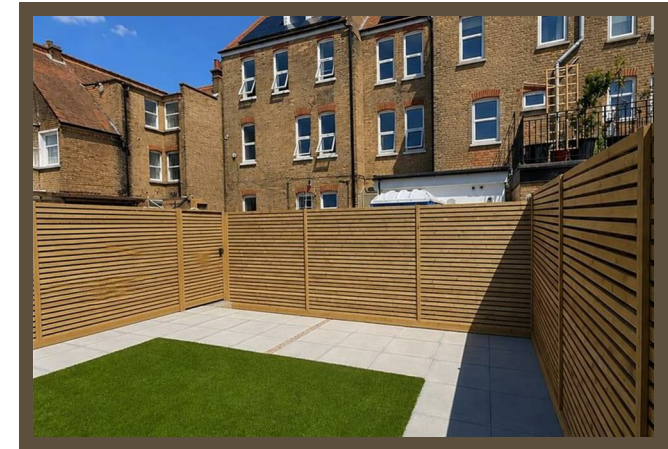
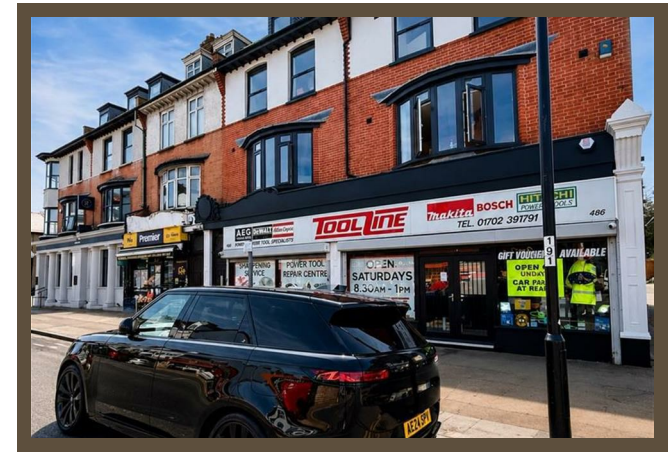
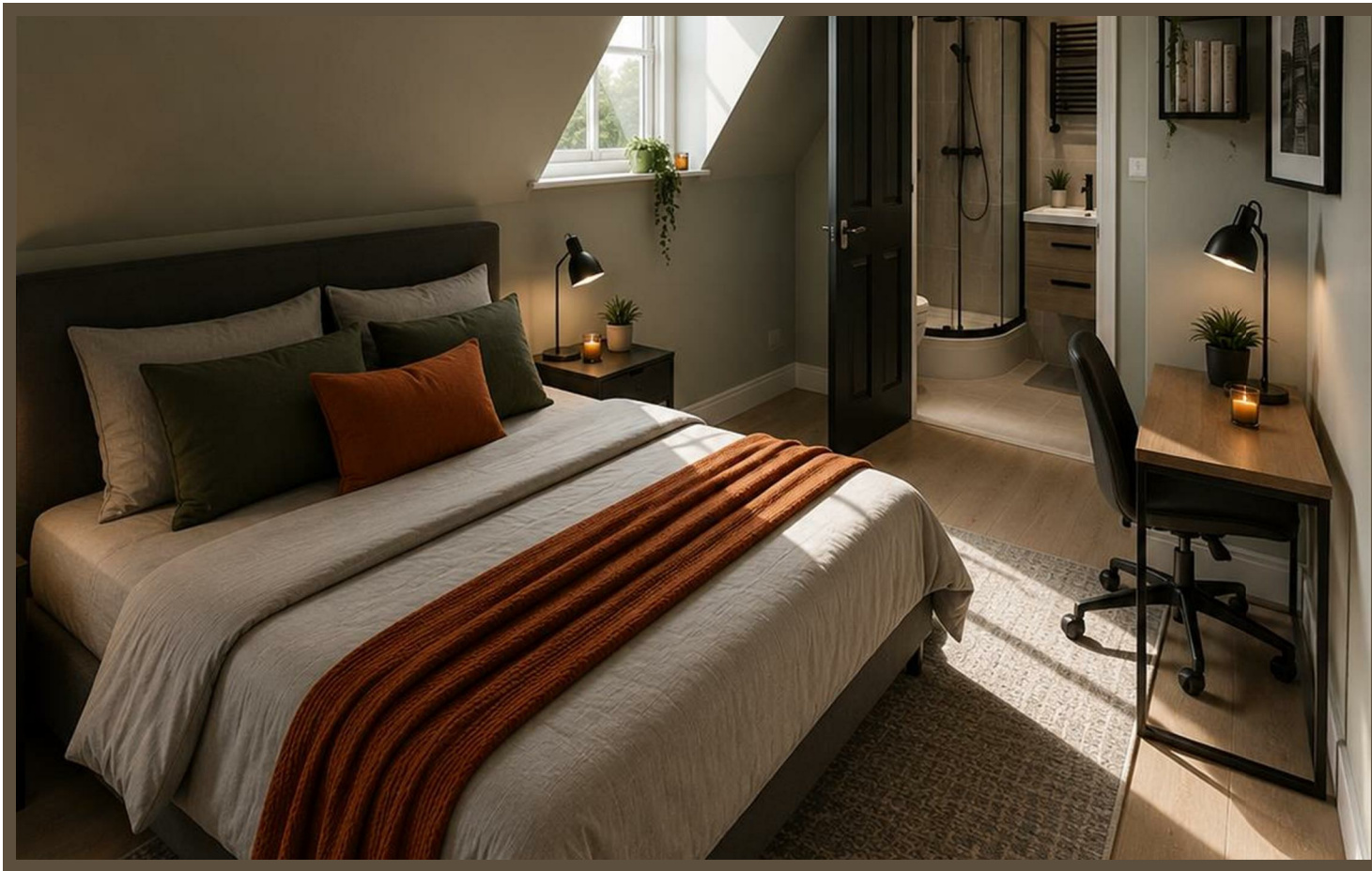
WESTCLIFF-ON-SEA, SS0 9LD

**£800 per  
month**

\*\*\*\* FIRST VIEWINGS ON SATURDAY 25/7 \*\*\*\* Scott & Stapleton are excited to offer for rent the latest development from the Spaces Group. This is 'The Lofts' a superb development of just 12 HMO rooms finished to the high standards to which we have been accustomed.

This particular room benefits from a luxury shower room en suite and the added bonus of a kitchenette. All rooms benefit from luxury furniture including double beds, wardrobes, chest of drawers, bedside cabinets & TV's.

The communal area is a particular feature of this development with a bright & airy feel and a cool,



Energy Efficiency Rating		
	Current	Potential
<i>Very energy efficient - lower running costs</i>		
(92 plus) <b>A</b>		
(81-91) <b>B</b>		
(69-80) <b>C</b>		
(55-68) <b>D</b>		
(39-54) <b>E</b>		
(21-38) <b>F</b>		
(1-20) <b>G</b>		
<i>Not energy efficient - higher running costs</i>		
<b>England &amp; Wales</b>	EU Directive 2002/91/EC	

Environmental Impact (CO <sub>2</sub> ) Rating		
	Current	Potential
<i>Very environmentally friendly - lower CO<sub>2</sub> emissions</i>		
(92 plus) <b>A</b>		
(81-91) <b>B</b>		
(69-80) <b>C</b>		
(55-68) <b>D</b>		
(39-54) <b>E</b>		
(21-38) <b>F</b>		
(1-20) <b>G</b>		
<i>Not environmentally friendly - higher CO<sub>2</sub> emissions</i>		
<b>England &amp; Wales</b>	EU Directive 2002/91/EC	