



VILLAGE ESTATES

• EST.1993 •



93 Main Road, Sidcup, Kent DA14 6ND

Tel: 0208 302 1002

www.village-estates.com

Email: sidcup@village-estates.com



**LARGER THAN AVERAGE
PLOT/GARDENS**

CENTRAL SIDCUP LOCATION

**OFF STREET PARKING FOR TWO
CARS**

WELL PROPORTIONED ROOMS

CLOSE TO HIGH STREET

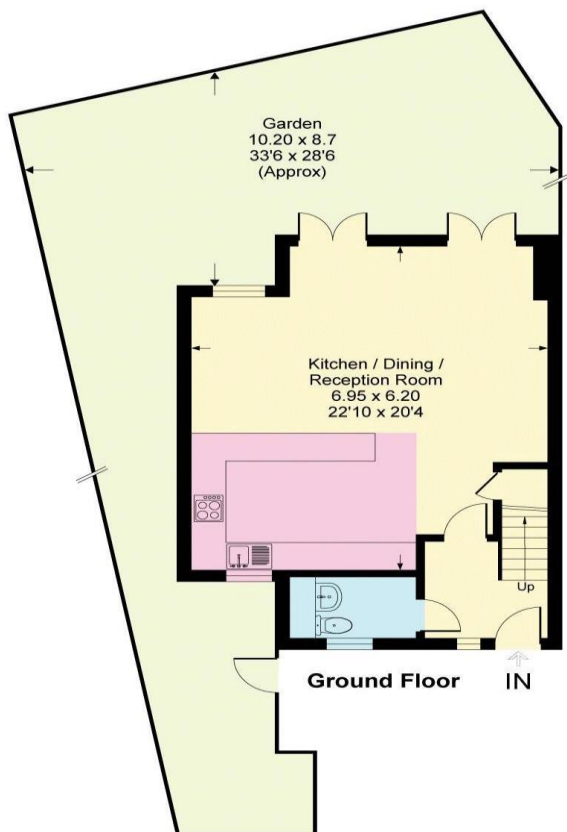
**EXCELLENT SCHOOL
CATCHMENT**



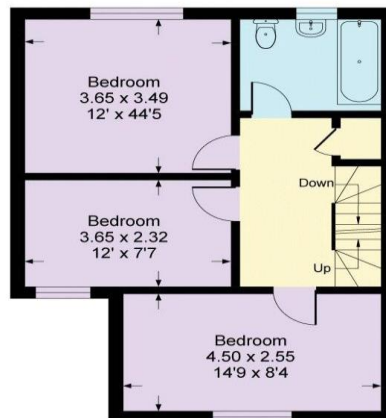
12 Chatswood Mews
Sidcup, DA14 6FE

**Guide Price £700,000-
£725,000**

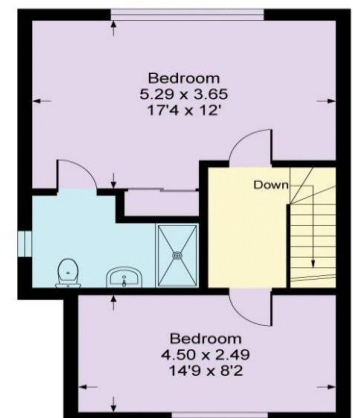
NO ONWARD CHAIN! Built in 2015 and part of a development of exclusive four/five family homes, Village Estates are delighted to present to the market for the first time a five bedroom semi-detached property. Located in a secluded cul-de-sac within walking distance to Sidcup train station and local high street. Positioned on an end plot the property benefits from an extended front garden and off street parking for two cars. The property also falls into the catchment area of many highly rated Primary and Secondary schools such as Chis and Sid Grammar School.



Approximate Gross Internal Area = 142 sq m / 1528 sq ft
Chatswood Mews, DA14



First Floor



Second Floor

This plan is for layout guidance only. Not drawn to scale unless stated. Windows and door openings are approximate. Whilst every care is taken in the preparation of this plan, please check all dimensions, shapes and compass bearings before making any decisions reliant upon them.
Produced by Planpix

CONSUMER PROTECTION FROM UNFAIR TRADING REGULATIONS 2008

Please note that any services, heating system or appliances have not been tested, and no warranty can be given or implied as to their working order. You are advised to obtain verification from your solicitor or surveyor. References to the tenure of a property are based on information supplied by the seller. We have not had sight of the title documents and a buyer is advised to obtain verification from their solicitor. Items shown in photographs are not included unless specifically mentioned within the sales particulars, but may be available by separate negotiation. Whilst every attempt has been made to ensure the accuracy of the floor plan contained here, measurements of doors, windows, rooms and any other items are approximate and no responsibility is taken for any error, omission, or mis-statement. We advise you to book an appointment to view before embarking on any journey to see a property, and check its availability. The accuracy of these details are not guaranteed and they do not form part of the contract.