



10 Thornton Close, Peterborough
£290,000

 **NEWTON FALLOWELL**

10 Thornton Close

Gunthorpe, Peterborough

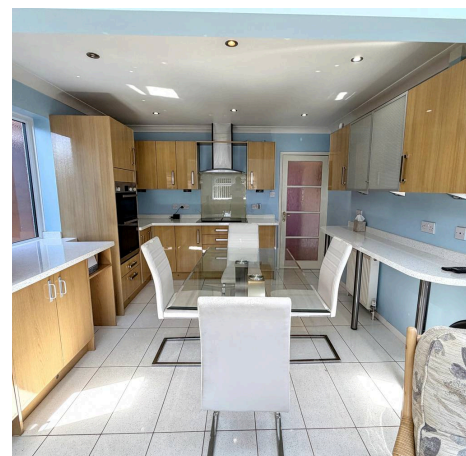
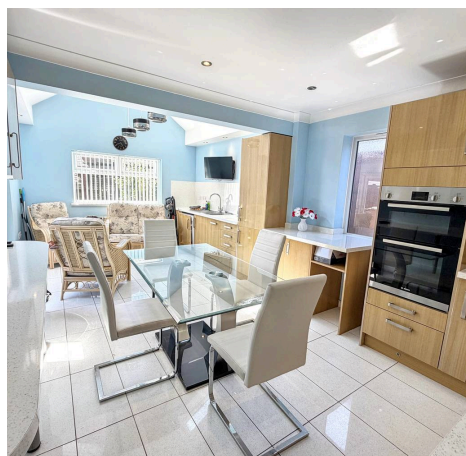
*** SOLD PRIOR TO MARKETING - CALL TO REGISTER YOUR DETAILS TO NOT MISS OUT ***Upon entering the property, you are welcomed into a central hallway that provides convenient access to the accommodation. The bright and airy lounge is positioned to the front of the home, featuring ample space for comfortable seating arrangements and a large bay window that allow for plenty of natural light. The kitchen diner is well-appointed with a range of fitted units, integrated appliances (including oven, hob, fridge freezer, washer dryer and extractor), and plentiful worktop space. The three bedrooms are all well-proportioned, with the principal bedroom boasting a bay fronted window, with all the bedrooms benefitting from the contemporary shower room comprising of a three-piece white suite, including a walk-in shower enclosure, wash basin, and WC. Outside the property hosts a garage with driveway parking for multiple vehicles to the front and to the rear a south facing rear garden.

Council Tax band: C

Tenure: Freehold

EPC Energy Efficiency Rating:

EPC Environmental Impact Rating:





Entrance Hall

Lounge

14' 8" x 13' 3" (4.48m x 4.05m)

Kitchen / diner

21' 7" x 11' 3" (6.59m x 3.42m)

Bedroom 1

11' 11" x 11' 5" (3.62m x 3.49m)

Bedroom 2

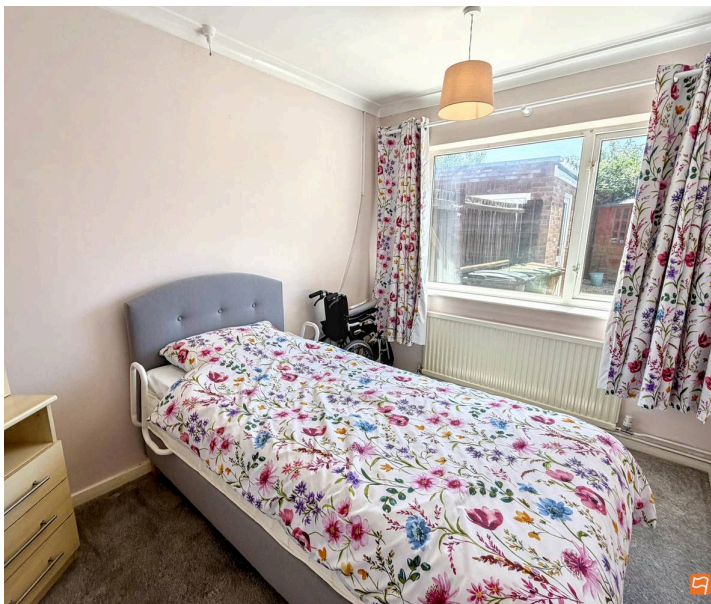
10' 3" x 8' 0" (3.12m x 2.44m)

Bedroom 3

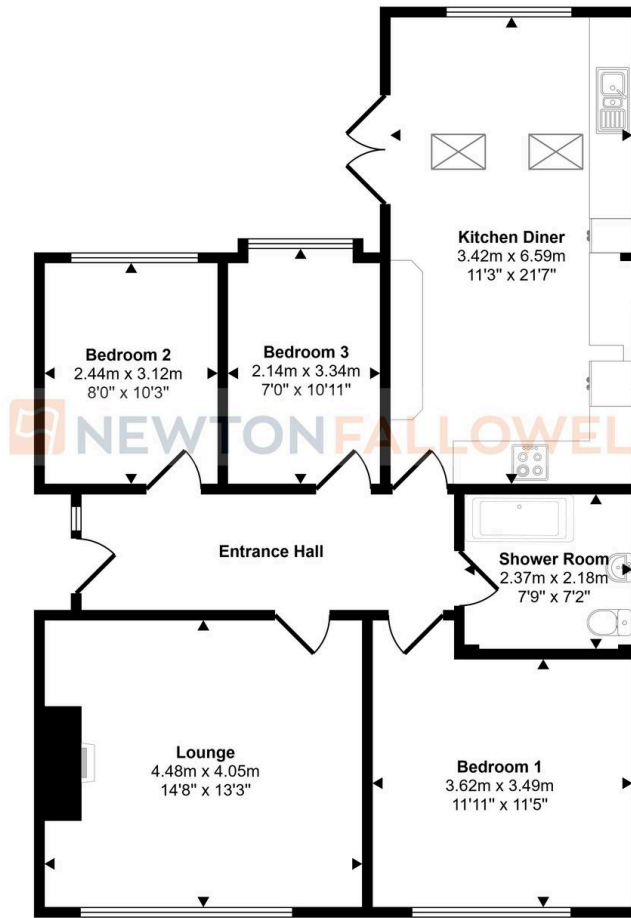
10' 11" x 7' 0" (3.34m x 2.14m)

Shower Room

7' 9" x 7' 2" (2.37m x 2.18m)



Approx Gross Internal Area
86 sq m / 930 sq ft



Floorplan

This floorplan is only for illustrative purposes and is not to scale. Measurements of rooms, doors, windows, and any items are approximate and no responsibility is taken for any error, omission or mis-statement. Icons of items such as bathroom suites are representations only and may not look like the real items. Made with Made Snappy 360.

Newton Fallowell - Peterborough

Newton Fallowell Estate Agents, 11 Skaters Way - PE4 6NB

01733 511225 · peterborough@newtonfallowell.co.uk · newtonfallowell.co.uk/peterborough