



Hazelhurst Road, Castle Bromwich, Birmingham



Hazelhurst Road, Castle Bromwich, Birmingham, B36 0BH

for sale offers over
£325,000



Property Description

NO CHAIN!!! Burchell Edwards are pleased to offer this three double bedroom family home in the heart of Castle Bromwich. This property has been extended creating a modern, large kitchen space with a breakfast bar, also the garage has been converted, offering an extra space downstairs which could be used as a play, room, study or even home gym. There are three double bedrooms which is a rare find in this period property meaning the kids won't have to fight over who gets the biggest room.

Modern throughout, it is ready to walk straight into and being in the immediate vicinity of local shops, bus routes and school catchments, this property will not be around for long.

Entrance Hallway

Double glazed window to front elevation, door to front elevation, laminate flooring, central heating radiator and under stairs storage cupboard.

Lounge

Double glazed bay windows to front and rear elevation and double glazed doors to rear elevation.

Reception Room

Double glazed window to front elevation, central heating radiator, laminate flooring and storage cupboard.

Kitchen

Two double glazed windows to rear elevation, a range of wall and base units with work surface over incorporating a sink with drainer unit, electric oven, gas hob, cooker hood, laminate flooring, central heating radiator and access to side passage.

Landing

Double glazed window to side elevation, carpet and loft access via hatch.

Bedroom One

Double glazed bay window to front elevation, central heating radiator, carpet and fitted wardrobes.

Bedroom Two

Double glazed bay window to rear elevation, central heating radiator and carpet.

Bedroom Three

Double glazed window to front elevation, central heating radiator, carpet and eaves storage.

Bathroom

Double glazed window to rear elevation, W.C, wash hand basin, corner bath, shower cubicle, fully tiled walls and heated towel rail.

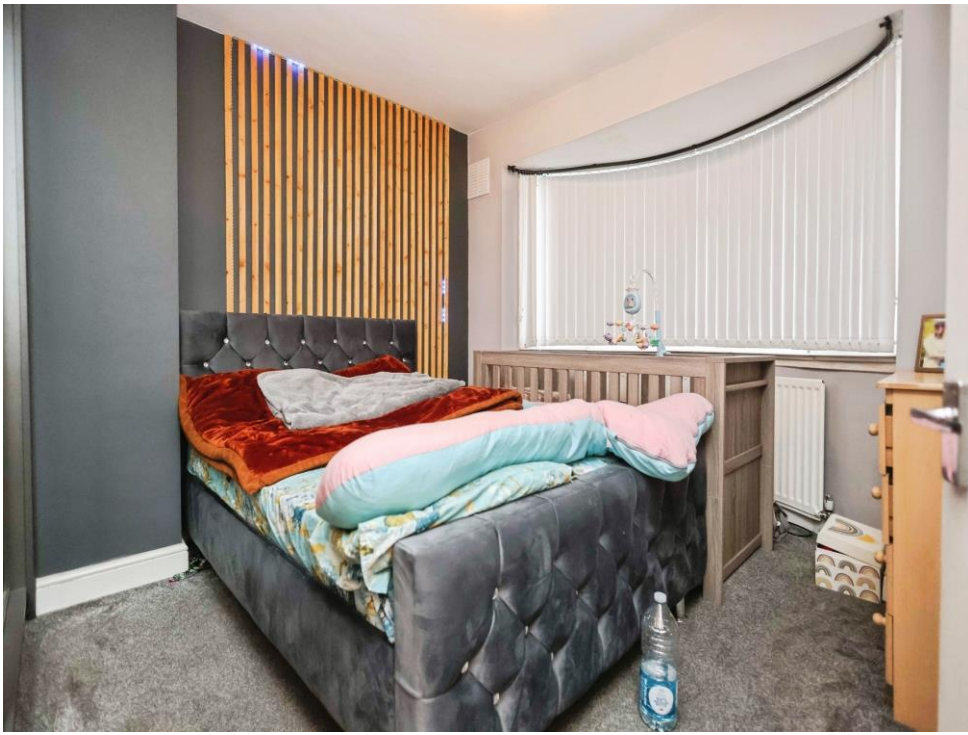
Front Garden

Block paved driveway providing off road parking and laid to lawn.

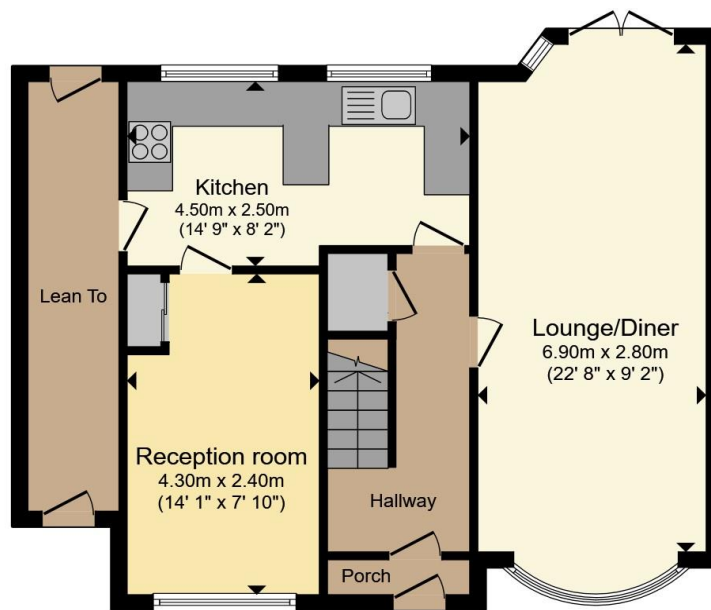
Rear Garden

Block paved patio, pathway and laid to lawn.

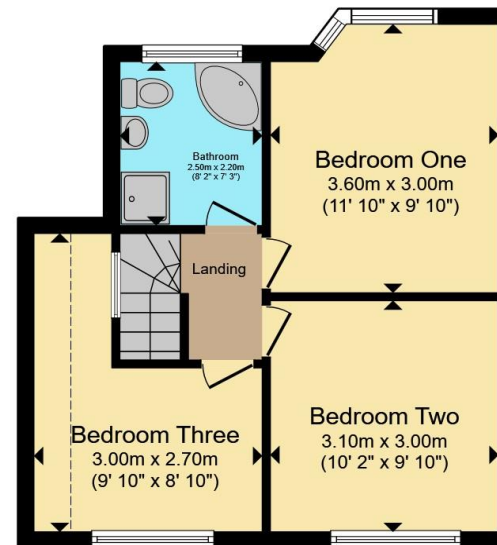








Ground Floor



First Floor

Total floor area 96.9 m² (1,043 sq.ft.) approx

This floor plan is for illustrative purposes only. It is not drawn to scale. Any measurements, floor areas (including any total floor area), openings and orientation are approximate. No details are guaranteed, they cannot be relied upon for any purpose and they do not form part of any agreement. No liability is taken for any error, omission or misstatement. A party must rely upon its own inspection(s). Powered by www.propertybox.io



To view this property please contact Burchell Edwards on

T 0121 749 7888
E castlebromwich@burchelledwards.co.uk

2-4 Hurst Lane
 BIRMINGHAM B34 7HR

EPC Rating: D Council Tax
 Band: D

Tenure: Freehold

view this property online burchelledwards.co.uk/Property/CBW211070



1. MONEY LAUNDERING REGULATIONS Intending purchasers will be asked to produce identification documentation at a later stage and we would ask for your co-operation in order that there will be no delay in agreeing the sale. 2. These particulars do not constitute part or all of an offer or contract. 3. The measurements indicated are supplied for guidance only and as such must be considered incorrect. Potential buyers are advised to recheck measurements before committing to any expense. 4. We have not tested any apparatus, equipment, fixtures, fittings or services and it is in the buyers interest to check the working condition of any appliances.

Burchell Edwards is a trading name of Connells Residential which is registered in England and Wales under company number 1489613, Registered Office is Cumbria House, 16-20 Hockliffe Street, Leighton Buzzard, Bedfordshire, LU7 1GN. VAT Registration Number is 500 2481 05.

See all our properties at www.burchelledwards.co.uk | www.rightmove.co.uk | www.zoopla.co.uk

Property Ref: CBW211070 - 0002