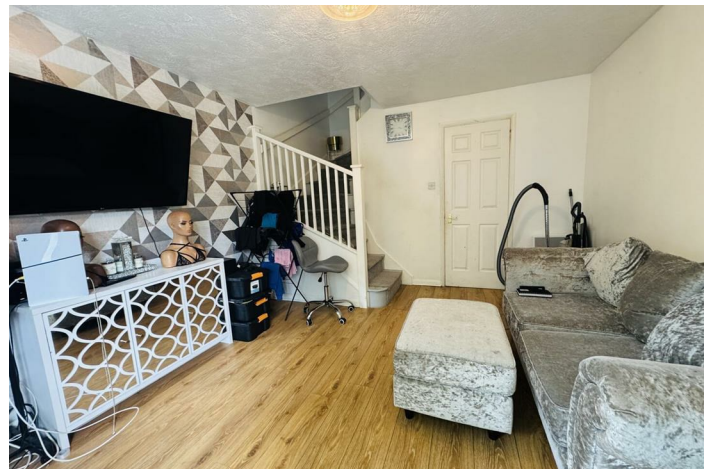


FREEHOLD



House (EPC Rating: E)

17 STEPNEY CLOSE, CRAWLEY, WEST SUSSEX, RH10 7XB

Price Guide

£335,000



2 Bedroom House located in Crawley

Situated in the highly desirable residential area of Maidenbower, this well-presented two-bedroom house offers spacious and versatile accommodation, benefitting from freehold ownership and the added advantage of no onward chain.

The ground floor comprises a bright and generously proportioned living room, providing an excellent space for both relaxation and entertaining. The property further benefits from a well-appointed kitchen, offering ample worktop space, storage, and functionality, alongside a useful additional storage room for everyday convenience.

To the first floor, the property offers two well-sized double bedrooms. The principal bedroom is enhanced by integrated sliding mirrored wardrobes, providing excellent built-in storage whilst maintaining a clean and contemporary finish. The second bedroom is also a comfortable double, ideal for guests, family use, or a home office.

The family bathroom is finished to a practical standard, comprising a bath with overhead shower, WC, and wash basin, offering a well-balanced and functional layout.

Further benefits include double glazing throughout, electric heating, and a fully electric cooker and boiler system.

Offered to the market with vacant possession and no onward chain, this property represents an excellent opportunity for first-time buyers, downsizers, or investors seeking a well-located home in a popular and established residential setting.

The property is conveniently positioned within easy reach of local amenities, reputable schools, bus routes, and transport links, making it an ideal choice for commuters and families alike.

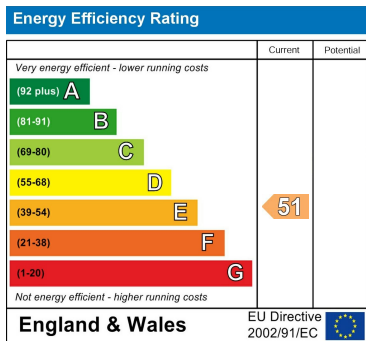


RICHMOND HOUSE - SALES | 105 HIGH STREET, CRAWLEY, WEST SUSSEX, RH10 1DD

Council Tax Band

C

Energy Performance Graph



Call us on

01293529993

info@connectukgroup.co.uk

connectukgroup.co.uk

Agents Note: Whilst every care has been taken to prepare these particulars, they are for guidance purposes only. All measurements are approximate and are for general guidance purposes only and whilst every care has been taken to ensure their accuracy, they should not be relied upon and potential buyers are advised to recheck the measurements.