



**Guide Price**  
**£255,000**

**Freehold**

3x  1x  2x 

**Beaulieu Road,  
Portsmouth, Hampshire,  
PO2**

**OVER 60?**

Secure this property  
for up to **59% less!**

**cubitt & west**  
Helping you move forwards



## Main features

- Offered with no forward chain
- Downstairs cloakroom & upstairs newly renovated shower room
- Sunny aspect low maintenance rear garden
- Bright spacious family kitchen separate from lounge
- Ideal for residential buyers and investors

## Accommodation

### GROUND FLOOR

Entrance Hallway

Lounge: 14'2 x 9'9 (4.32m x 2.97m)

Dining Room: 12'9 x 10'6 (3.89m x 3.20m)

Kitchen: 11'3 x 8'2 (3.43m x 2.49m)

Conservatory: 11'0 x 8'6 (3.36m x 2.59m)

Cloakroom

### FIRST FLOOR

Landing

Bedroom 1: 12'0 x 11'0 (3.66m x 3.36m)

Bedroom 2: 12'5 x 5'5 (3.79m x 1.65m)

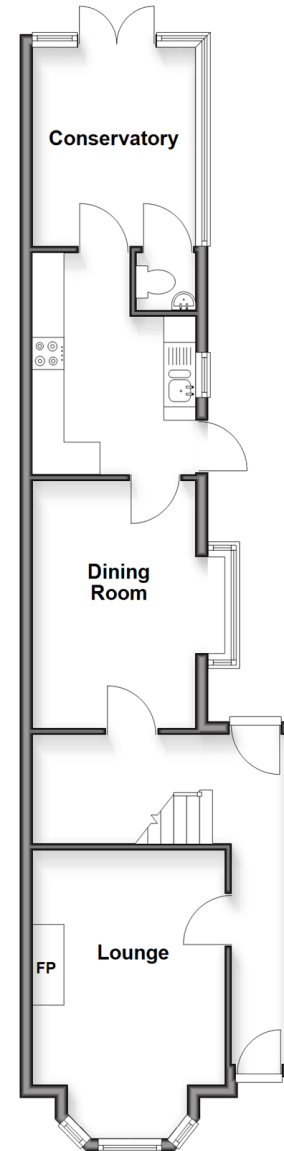
Bedroom 3: 11'1 x 8'4 (3.38m x 2.54m)

Shower Room: 7'5 x 5'8 (2.26m x 1.73m)

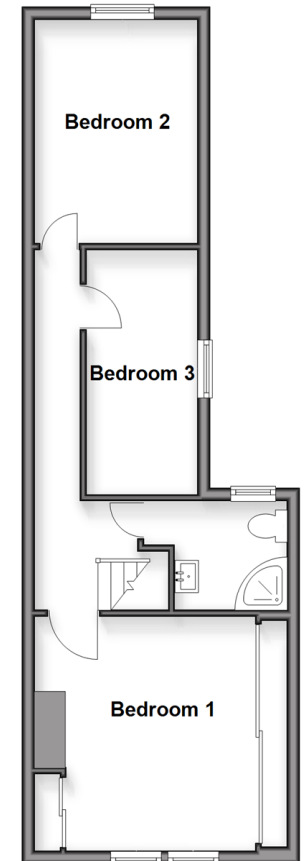
### OUTSIDE

Rear Garden

**Ground Floor**  
Approx. 50.6 sq. metres (544.8 sq. feet)



**First Floor**  
Approx. 40.9 sq. metres (440.6 sq. feet)



**Unable to display material information. Please check with the branch for material information details for this property**



41635283/20260422/SH/ZMG