

01294 60 2000

www.jascampbell.co.uk

JAS CAMPBELL & CO LTD
—ws—
solicitors notaries estate agents



Detached Bungalow
23 Murray Crescent, Lamlash, Isle of Arran, KA27 8NS
Offers Over £215,000



rightmove

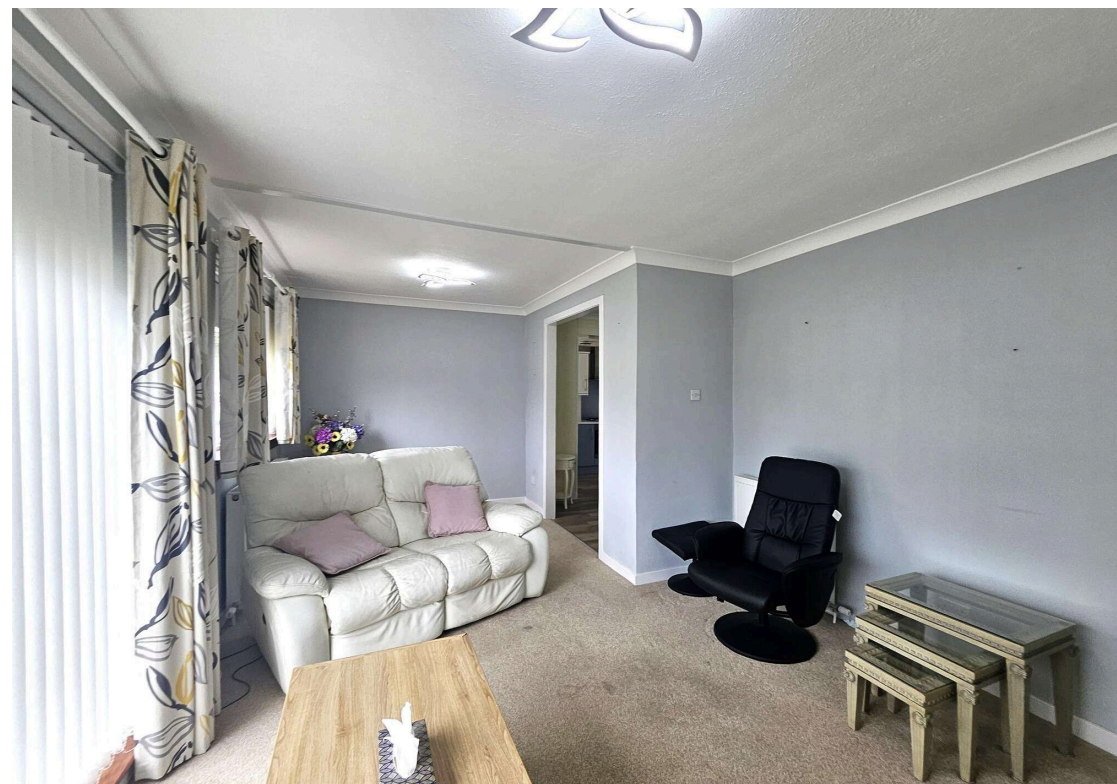
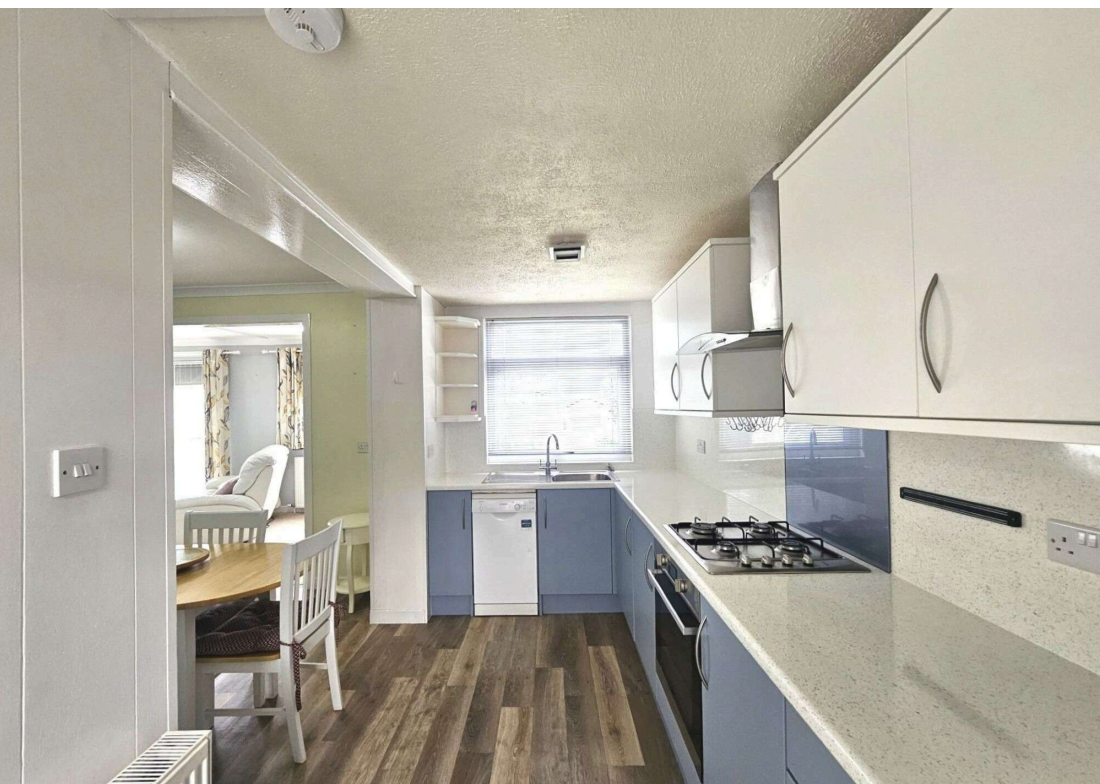
nTheMarket

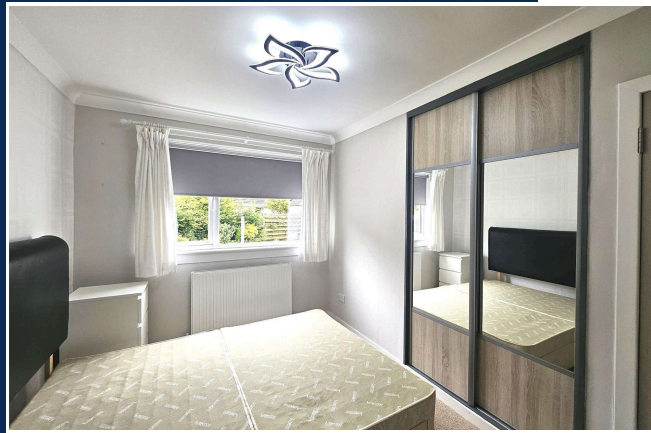
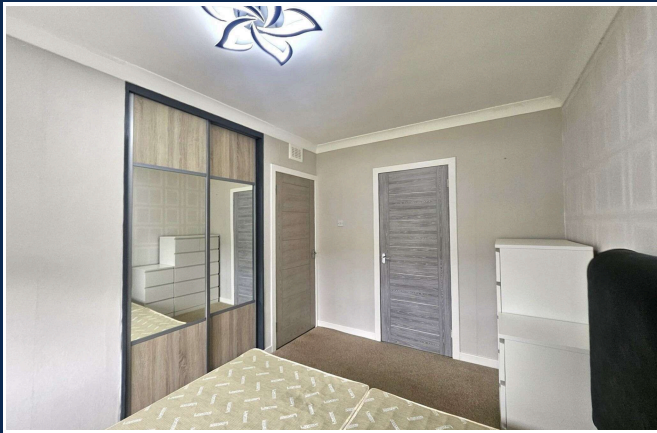
Zoopla

PrimeLocation.com

espc







This beautifully presented detached bungalow is located in the heart of Lamlash, one of Arran's most sought-after villages, offering convenient access to local shops, public transport links and both primary and secondary schooling.

The property is well suited to a range of buyers and enjoys a bright, spacious layout with attractive countryside views to the rear. Finished in a clean, contemporary style throughout, it is presented in true walk-in condition. The property benefits from having a private front garden with private a drive and garage together with an enclosed rear garden with a shed and attractive seating areas, providing an ideal space to relax and take in the views.

A welcoming reception hallway provides access to all apartments and includes useful storage.

The dining area sits at the heart of the home and flows seamlessly into a stylish modern kitchen, creating an attractive open-plan space ideal for both everyday living and entertaining. The kitchen is well fitted, enjoys a pleasant outlook to the front, and also provides direct access to the rear garden. The lounge is a particularly impressive feature, filled with natural light from large windows including a full-height feature window to the front, creating a bright and inviting space to relax while enjoying the outlook.

There are two generously sized double bedrooms, both located to the rear of the property and benefiting from attractive garden and countryside views. Bedroom One includes twin built-in wardrobes, while Bedroom Two offers a useful built-in storage cupboard and is currently arranged as a twin room.

MEASUREMENTS

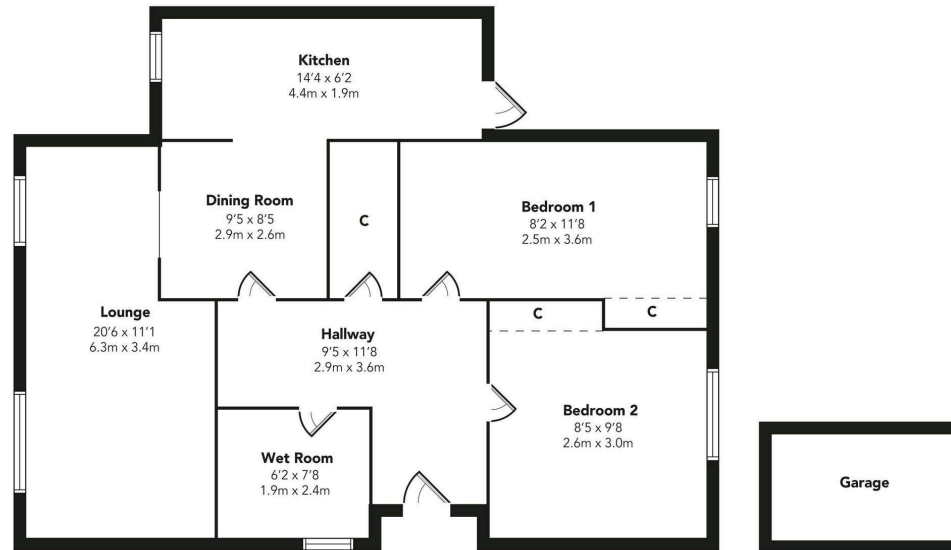
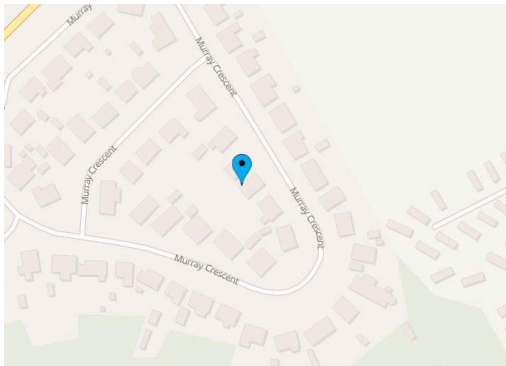
Reception Hallway	2.90 m x 3.60 m / 9'6" x 11'10"
Dining Room	2.90 m x 2.60 m / 9'6" x 8'6"
Kitchen	1.90 m x 4.40 m / 6'3" x 14'5"
Lounge	6.30 m x 3.40 m / 20'8" x 11'2"
Bedroom 1	2.50 m x 3.60 m / 8'2" x 11'10"
Bedroom 2	2.60 m x 3.00 m / 8'6" x 9'10"
Wet Room	1.90 m x 2.40 m / 6'3" x 7'10"

FEATURES

Ground Floor Living
 Sought-after village location in the heart of Lamlash
 Two well-proportioned double bedrooms with built-in storage
 Bright and spacious accommodation presented in walk-in condition
 Stylish modern kitchen with open-plan dining area
 Generous lounge with feature window and excellent natural light
 Modern wet room with walk-in shower
 Oil-fired heating system
 Double glazing
 Drive and Garage

EPC RATING - D

COUNCIL TAX BAND - D



Floorplans are indicative only - not to scale
Produced by Plushplans

Viewing

Tel: 01294 60 2000

Offers

All further negotiations and all offers to be lodged with Messrs Jas Campbell & Co. WS. 76 Princes Street, Ardrrossan KA22 8DQ.

Valuation

If you have property to sell we can provide you with a pre-sale advice and opinion on the sale of your property.

Important

These particulars are believed to be correct and have been prepared in good faith, but their accuracy is not guaranteed and they do not form part of any contract.



SOLICITORS
AND INDEPENDENT
FINANCIAL ADVISERS

JAS CAMPBELL & CO LTD
ws
solicitors notaries estate agents



Bank of Scotland Buildings, 57 Dockhead Street
Saltcoats KA21 5EH Telephone 01294 60 2000
Fax 01294 603 023 DX 591001 Saltcoats
E-mail: mail@jascampbell.co.uk www.jascampbell.co.uk

85 Main Street, West Kilbride
Telephone 01294 829 599
or 01294 829 602

76 Princes Street Ardrrossan
Telephone 01294 464 131
or 01294 60 2000

Unit 2, Douglas Centre,
Brodict Isle of Arran KA27 8AJ
Telephone 01770 302 027

Ref:
E508913

