

Keybridge Tower

1 Exchange Gardens, Vauxhall, SW8 1DF

£670 Per Week



1



1

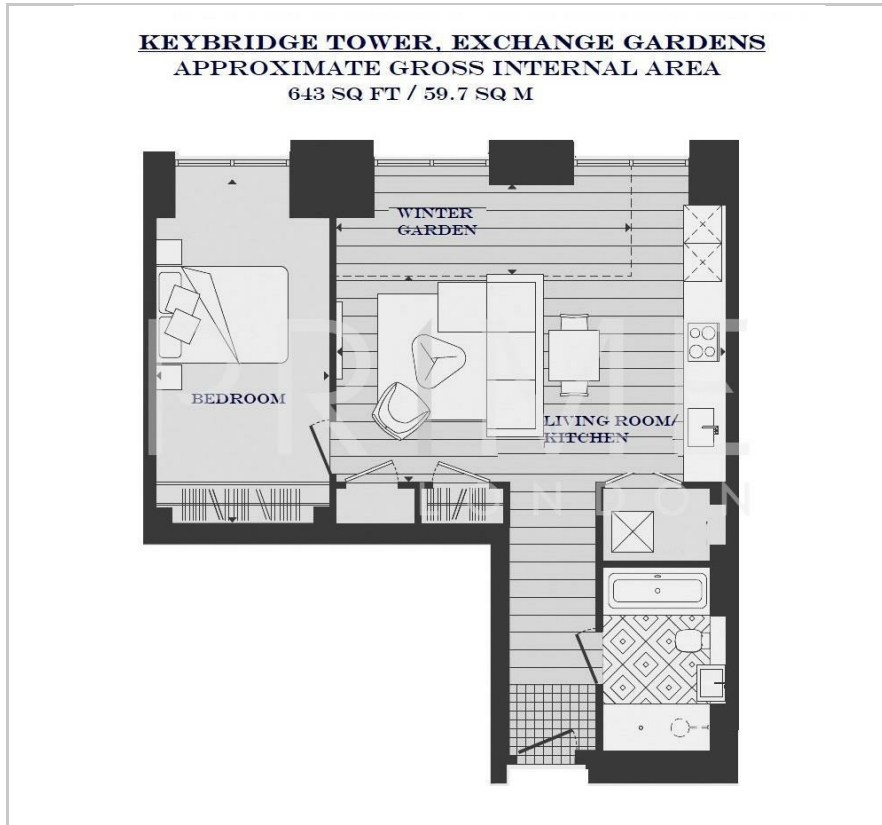


1

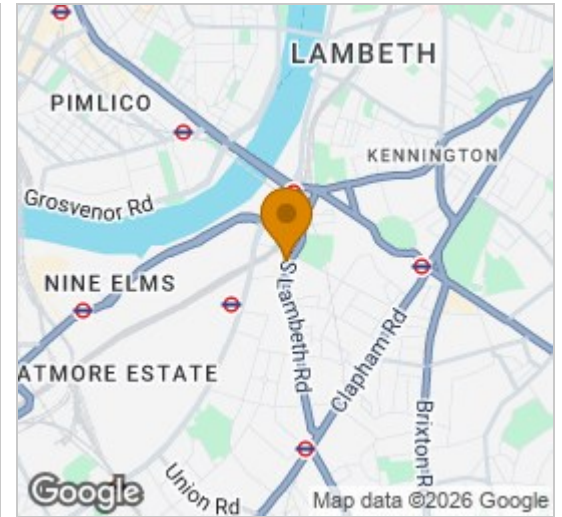


B

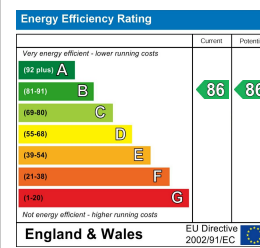
Floor Plan



Area Map



Energy Efficiency Graph



Viewing

By appointment. Contact us on 0207 928 6663 if you wish to arrange a viewing appointment for this property, or require further information.

- One bedroom apartment
- Fully furnished
- Close walk to Nine Elms Northern Line tube station
- 643 sq ft (59.7 sqm)
- Gym, pool, spa, sauna and steam room
- 24 hour concierge service and residents' Club Lounge

This impressive warehouse style one bedroom apartment is presented fully furnished, and is available for lease through Prime London.

The property is an excellent size at 643 sq ft (59.7 sqm) and is located in the UK's tallest brick tower, which is also surrounded by an acre of landscaped open space.

Comprising of an open plan reception room, smart integrated kitchen, large double bedroom with great storage and a luxury bathroom, the apartment is well designed to be lived in and enjoyed.

Residents benefit from a 24 hour concierge service, 15 metre swimming pool, a club lounge and communal gardens, all within walking distance of Zone 1 transport links.



These particulars, whilst believed to be accurate are set out as a general outline only for guidance and do not constitute any part of an offer or contract. Intending purchasers should not rely on them as statements of representation of fact, but must satisfy themselves by inspection or otherwise as to their accuracy. No person in this firm's employment has the authority to make or give any representation or warranty in respect of the property.