



Price
£400,000

Freehold

3x  1x  3x 

**Medlar Grove,
Hempstead, Gillingham,
Kent, ME7**

OVER 60?

Secure this property
for up to **59% less!**

Wards
Helping you move forwards



Main features

- Well presented family home
- Extended and spacious accommodation giving flexible living
- Ample parking on the driveway
- Generous sized rear garden
- Close to the motorway links, schools and Hempstead Valley Shopping Centre

Accommodation

GROUND FLOOR

Entrance Hall

Lounge : 13'10 x 12'3 (4.22m x 3.74m)

Dining Area : 10'6 x 8'3 (3.20m x 2.52m)

Play/Family Area : 9'0 x 7'8 (2.75m x 2.34m)

Kitchen : 20'1 x 7'2 (6.13m x 2.19m)

FIRST FLOOR

Landing

Bedroom 1 : 14'0 x 8'6 (4.27m x 2.59m)

Bedroom 2 : 9'3 x 9'3 (2.82m x 2.82m)

Bedroom 3 : 10'7 x 6'10 (3.23m x 2.08m)

Bathroom

OUTBUILDING

Former Garage : 14'3 x 9'1 (4.35m x 2.77m)

Storage

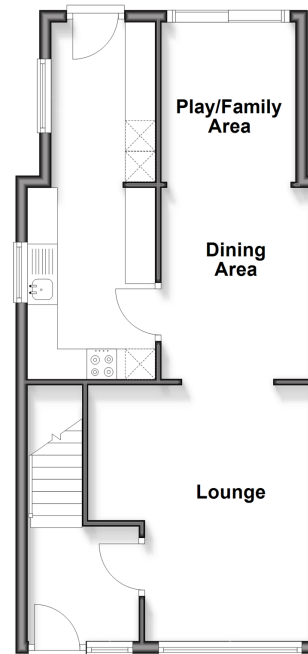
OUTSIDE

Rear Garden

Driveway

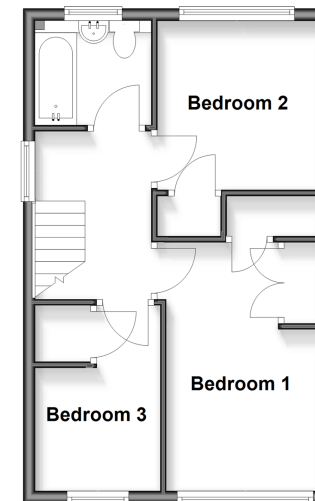
Ground Floor

Approx. 47.1 sq. metres (506.8 sq. feet)



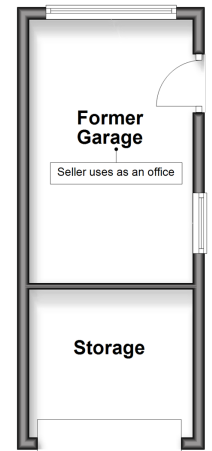
First Floor

Approx. 37.0 sq. metres (398.4 sq. feet)



Outbuilding

Approx. 19.0 sq. metres (204.6 sq. feet)



Call Rainham - 01634 373531 ■ wardsofkent.co.uk

■ Legal advice should be taken to verify fixtures/fittings, planning, alterations and/or lease details
 ■ Through a Homewise Home For Life Plan people aged 60+ can secure this property for up to 50% less, by purchasing a Lifetime Lease.

■ Appliances & services are untested, dimensions are approximate and floor plans are not to scale