

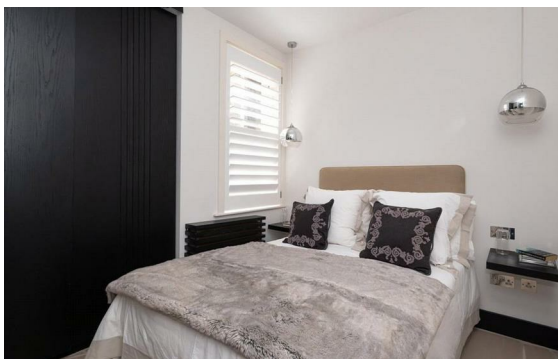
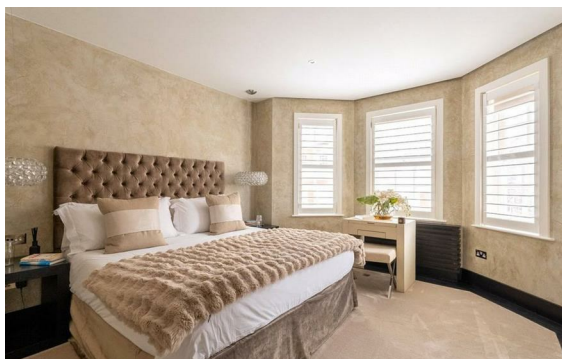


**Herbert Crescent, Knightsbridge, London, SW1X**

Rent £1,600 Per Month

2 Bed | 1 Bath | 1 Reception

*Please call us on 020 7724 2233 or email us [info@newingtonstates.com](mailto:info@newingtonstates.com) to book a viewing.*



A contemporary two-bedroom apartment offering well-balanced living space and modern finishes in a prime central London location. The property features a spacious reception room with a dedicated dining area, a separate fully fitted kitchen, a double bedroom with built-in wardrobes, and a second bedroom ideal as a guest room or study. A modern shower room completes the accommodation, while air conditioning ensures comfort throughout.

Located in Knightsbridge, the property is just moments from a wide range of luxury boutiques, restaurants, and amenities, with excellent transport links via Knightsbridge Station and close proximity to Hyde Park.

EPC rating: C

## Energy Efficiency Rating: C

Agents Note: Whilst every care has been taken to prepare these particulars, they are for guidance purposes only. All measurements are approximate and are for general guidance purposes only and whilst every care has been taken to ensure their accuracy, they should not be relied upon and potential buyers/tenants are advised to recheck the measurements.

**NEWINGTON**  
— ESTATES —

60 Upper Montagu Street

London

W1H 1SN

020 7724 2233

[info@newingtonestates.com](mailto:info@newingtonestates.com)

<http://www.newingtonestates.com>