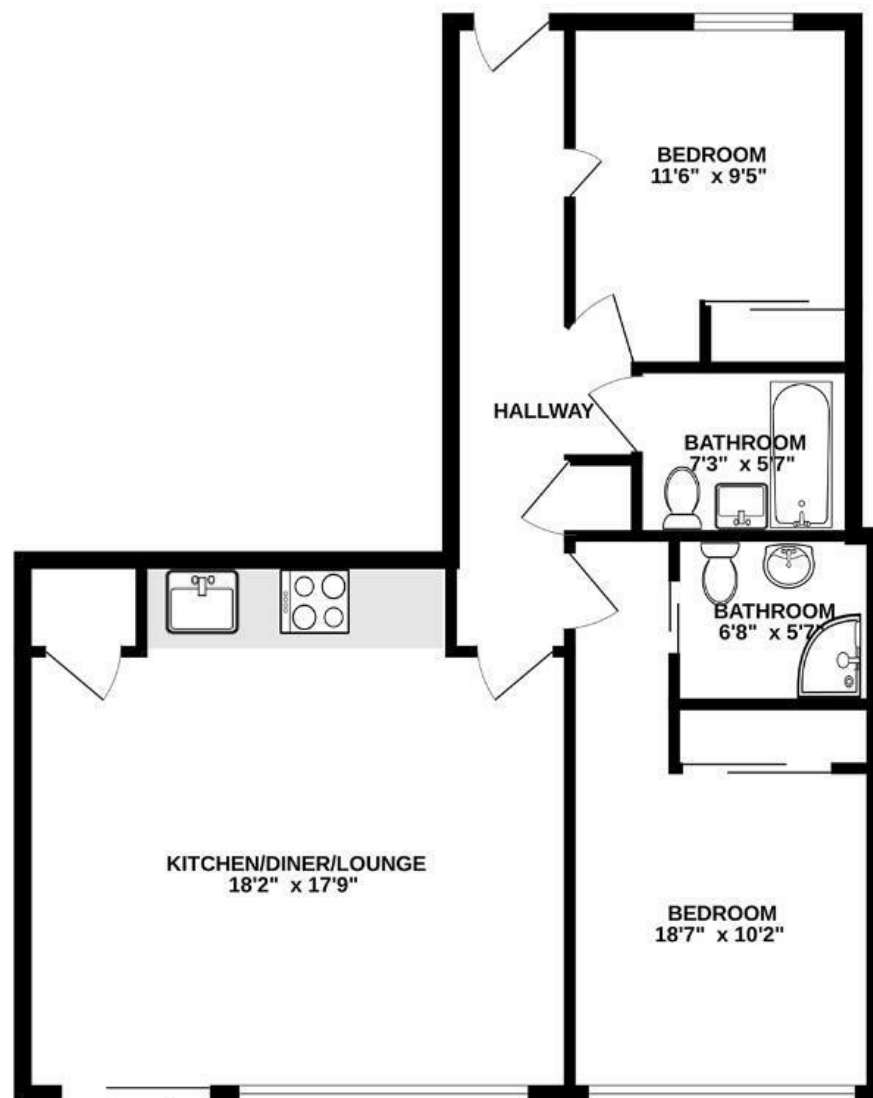


# Airpoint

## BEDMINSTER

APPROXIMATE FLOOR AREA  
69.1 SQM / 744 SQFT



Illustrations are for reference purposes only, measurements are approximate, not to scale.

**Boardwalk**

# Skypark Road , BRISTOL

£

£255,000



BS3 3NG

zzz

2 Bedrooms



2 Bathrooms

*"I've loved living in Airpoint for the last 6 years! My flat is light-filled, sunny and tucked down at a nice quiet end of the building with a huge terrace that I've filled with bespoke planters and Mediterranean plants. It's a real sun trap and a little haven only minutes from the buzz of Bedminster! North St, Wapping Wharf, the Harbourside and the city centre are all within easy walking distance, and there are more great eateries and shops opening in the area all the time."*

