



jordanfishwick

Gillbent Road

£1,200 PCM

Gillbent Road, Cheadle, SK8 6NJ

£1,200 PCM

AVAILABLE MID JUNE UNFURNISHED

This development on Gillbent Road has over recent years become extremely popular due to these spacious properties always being presented in excellent order.

With excellent access to the A34 bypass and Handforth Dean and with Manchester International Airport and the motorway network being only a short drive away this two double bedroom apartment is sure to be an attractive option to the growing family.

Entrance hall with storage, modern fitted kitchen with electric hob and oven, spacious lounge.

Two double bedrooms modern bathroom with shower over bath.

Contact Wilmslow 01625 536300 £1200.00pcm

EPC C

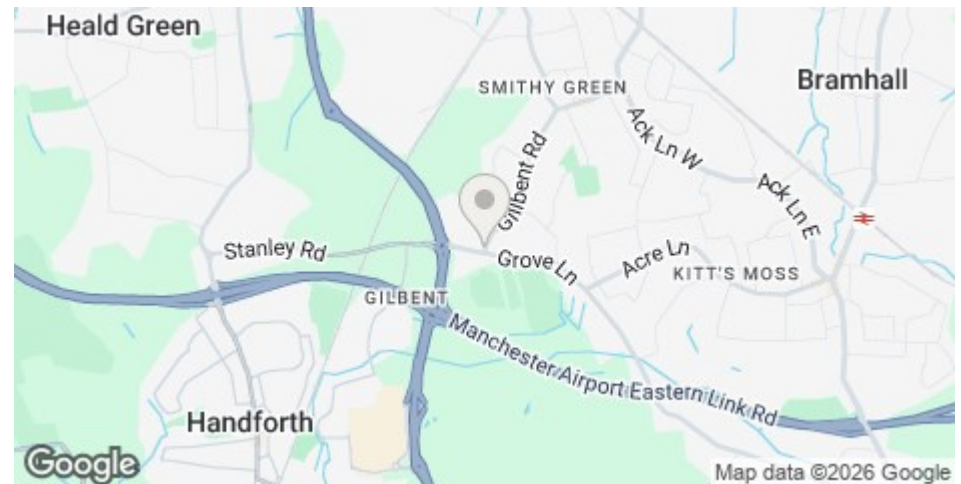
COUNCIL TAX B

LOCATION

Being only a short drive to Handforth Dean and A34 bypass these apartments are set in an ideal location for trips to Wilmslow, Alderley Edge and heading into Manchester. With off road parking and well-maintained interiors these apartments and maisonettes are always a popular choice

DIRECTIONS

From the A34 bypass heading towards Manchester bear right and come off the A34 onto Stanley Road, at the mini roundabout turn left and the apartments can be found on the left hand side



- TWO DOUBLE BEDROOMS
- POPULAR LOCATION
- SPACIOUS INTERIOR
- PARKING TO REAR
- VIEWING RECOMMENDED
- EPC C
- COUNCIL TAX B

Postcode - SK8 6NJ

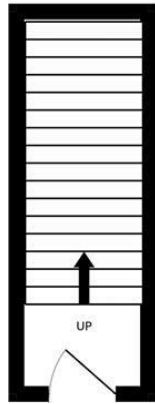
EPC Rating - C

Floor Area - sq ft

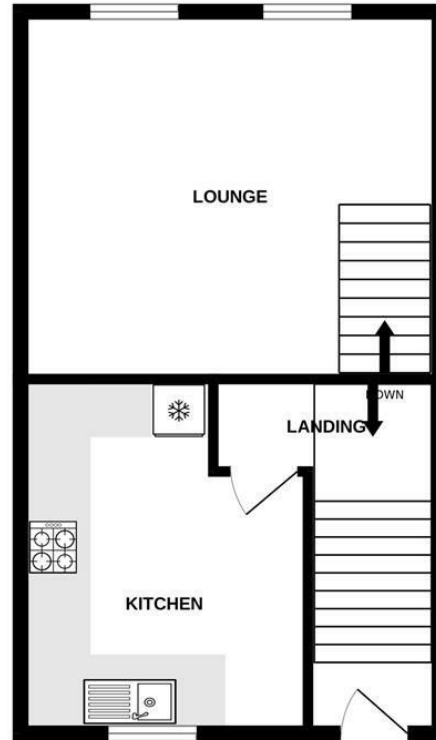
Local Authority - Stockport

Council Tax - B

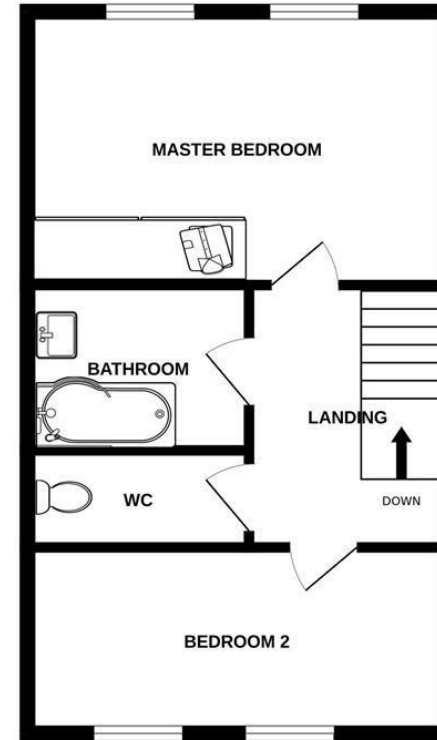
GROUND FLOOR



1ST FLOOR



2ND FLOOR



Measurements are approximate. Not to scale. Illustrative purposes only
Made with Metropix ©2024



These particulars are believed to be accurate but they are not guaranteed and do not form a contract. Neither Jordan Fishwick nor the vendor or lessor accept any responsibility in respect of these particulars, which are not intended to be statements or representations of fact and any intending purchaser or lessee must satisfy himself by inspection or otherwise as to the correctness of each of the statements contained in these particulars. Any floorplans on this brochure are for illustrative purposes only and are not necessarily to scale.

Offices at: Offices at Chorlton, Didsbury, Disley, Hale, Glossop, Macclesfield, Manchester Deansgate, Manchester Whitworth Street, New Mills, Sale, Wilmslow and Withington

01625 536300