



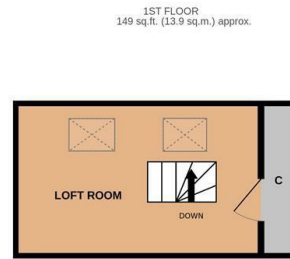
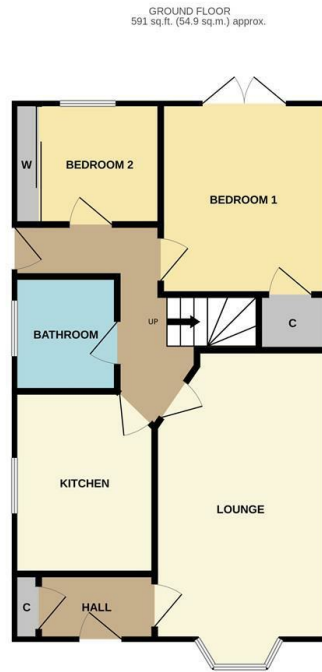
G.R.
Estates
unlock your happiness



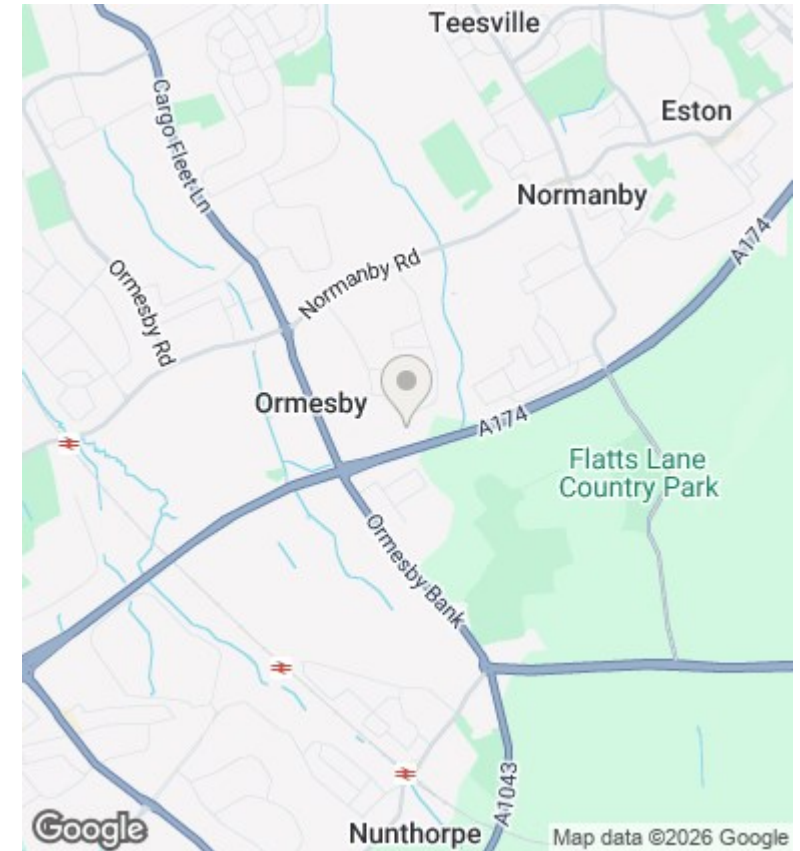
34 Endeavour Drive, Middlesbrough, TS7 9NN

£180,000

- Stunning Curb Appeal – Immaculate Frontage With Beautifully Maintained Gardens In A Quiet Ormesby Cul-De-Sac
- Immaculate Throughout – Spotless Carpets, Lovingly Cared-For Interior, And A Stylish Ground Floor Shower Room
- Bright White Kitchen – Clean, Modern Look With A Handy Breakfast Bar, Perfect For Everyday Living
- Spacious block-paved driveway with a fitted EV charging point – a large drive offering excellent off-street parking for multiple vehicles
- Versatile Loft Room – Fixed Staircase Access To A Useful Bonus Space For Hobbies, Guests Or Storage
- Recently updated combi boiler – efficient and reliable heating, giving peace of mind for years to come, with 8 years parts and labour warranty



TOTAL FLOOR AREA: 740 sq.ft. (68.8 sq.m.) approx.
Whilst every attempt has been made to ensure the accuracy of the floorplan contained here, measurements of doors, windows, rooms and any other items are approximate and no responsibility is taken for any error, omission or mis-statement. This plan is for illustration purposes only and should be used as such by any prospective purchaser. The services, systems and appliances shown have not been tested and no guarantee as to their operability or efficiency can be given.
 Made with Metropix ©2025



Directions

Viewings

Viewings by arrangement only. Call 01642 378022 to make an appointment.

Council Tax Band

B

EPC Rating:

D

Energy Efficiency Rating		Current	Potential
<i>Very energy efficient - lower running costs</i>			
(92 plus)	A		
(81-91)	B		
(69-80)	C		75
(55-68)	D	66	
(39-54)	E		
(21-38)	F		
(1-20)	G		
<i>Not energy efficient - higher running costs</i>			
England & Wales		EU Directive 2002/91/EC	