



House - Terraced (EPC Rating: D)

GOLF AT 23 KINGSWOOD PARK, BIRKDALE, SOUTHPORT, PR8 2JH

Per Week

£5,500 Per

FEATURES

- 2026 GOLF OPEN ACCOMMODATION
- Secure gated Kingswood Park location off Westcliffe Road
- 1.2 miles from Royal Birkdale Golf Club (The Open 2026 venue)
- Two bedrooms, including king-size master with en-suite
- Luxury bathroom with freestanding bath
- Stylish lounge with Smart TV and streaming



2 Bedroom House - Terraced located in Southport

GOLF | CHARLOTTE HOUSE, GROUND FLOOR, 35-37 HOGHTON STREET, SOUTHPORT, MERSEYSIDE, PR9 0NS



GOLF | CHARLOTTE HOUSE, GROUND FLOOR, 35-37 HOGHTON STREET, SOUTHPORT, MERSEYSIDE, PR9 0NS



GOLF | CHARLOTTE HOUSE, GROUND FLOOR, 35-37 HOGHTON STREET, SOUTHPORT, MERSEYSIDE, PR9 0NS



GOLF | CHARLOTTE HOUSE, GROUND FLOOR, 35-37 HOGHTON STREET, SOUTHPORT, MERSEYSIDE, PR9 0NS

Call us on

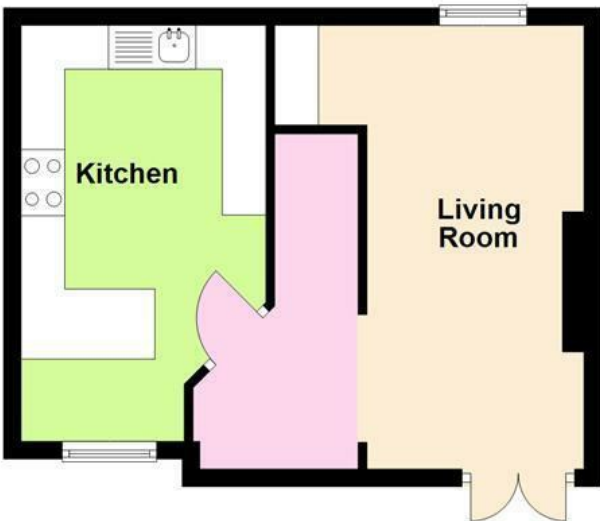
01704543434

golf@ajestateagents.co.uk
<https://www.ajestateagents.co.uk/properties/to-rent/sort-price-asc>

Council Tax Band

D

Ground Floor



First Floor



All measurements are approximate and are intended for general reference only. Floor plans may not be to scale. Viewers are advised to verify all measurements and dimensions independently. Plan produced using PlanUp.

Energy Efficiency Rating		
	Current	Potential
<i>Very energy efficient - lower running costs</i>		
(92 plus) A		
(81-91) B		
(69-80) C		
(55-68) D	65	
(39-54) E		
(21-38) F		
(1-20) G		
<i>Not energy efficient - higher running costs</i>		
England & Wales	EU Directive 2002/91/EC	

Agents Note: Whilst every care has been taken to prepare these particulars, they are for guidance purposes only. All measurements are approximate and are for general guidance purposes only and whilst every care has been taken to ensure their accuracy, they should not be relied upon and potential buyers are advised to recheck the measurements.

