



Virginia Close, Ashtead  
Ashtead

# Virginia Close

Ashted

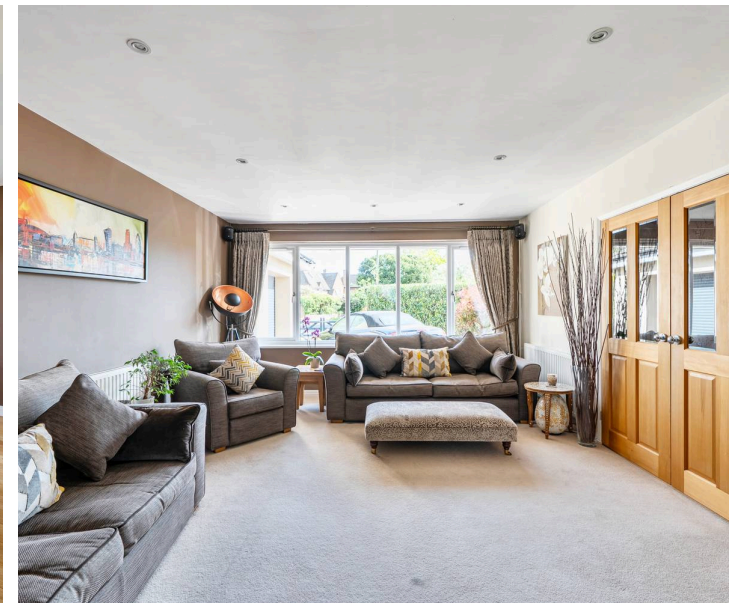
Council Tax band: G

Tenure: Freehold

EPC Energy Efficiency Rating: D

EPC Environmental Impact Rating: D

- Detached Home
- Five Bedrooms
- Four Reception Rooms
- Three Bathrooms
- Home Gym/Office Room with Air-Con
- Tasteful Decor Throughout
- Corner Plot
- Principle and Second Bedroom with En-suites
- Prime Ashted Location





V&H Homes are delighted to present this exceptional five bedroom, three bathroom detached residence, set within a quiet and highly desirable cul-de-sac in the heart of Ashted Village. Thoughtfully modernised throughout, this impressive home offers over 2,400 sq ft of versatile accommodation, perfectly suited to contemporary family living.

The ground floor is both elegant and practical in equal measure. A welcoming entrance leads to a beautifully proportioned living room, while a separate dining room provides an ideal setting for more formal occasions. To the side, a generous family room with air conditioning which creates a relaxed hub of the home, seamlessly connecting to the garden. The kitchen is well appointed with a clean, modern finish and enjoys a pleasant outlook, complemented by a separate study ideal for those working from home complete the ground floor.

Upstairs, five well balanced bedrooms provide excellent flexibility. The principal suite enjoys its own sense of space, while two further bathrooms serve the remaining bedrooms, all presented in a stylish and contemporary manner.

Externally, the property continues to impress with an additional side garden with a large out building. A gated frontage offers privacy and a carriage driveway, alongside an integral garage. The rear garden is a particularly attractive feature, providing a secluded setting ideal for both entertaining and family enjoyment.

Positioned within easy reach of Ashted's excellent schools, local amenities and transport links, this is a superb opportunity to acquire a refined and ready to move into family home in one of the area's most sought after locations.



- Detached Home
- Five Bedrooms
- Four Reception Rooms

# Virginia Close, Ashted, KT21

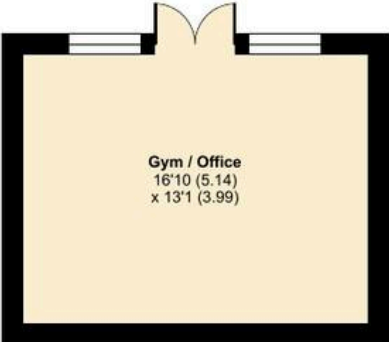
Approximate Area = 2110 sq ft / 196 sq m

Garage = 95 sq ft / 8.8 sq m

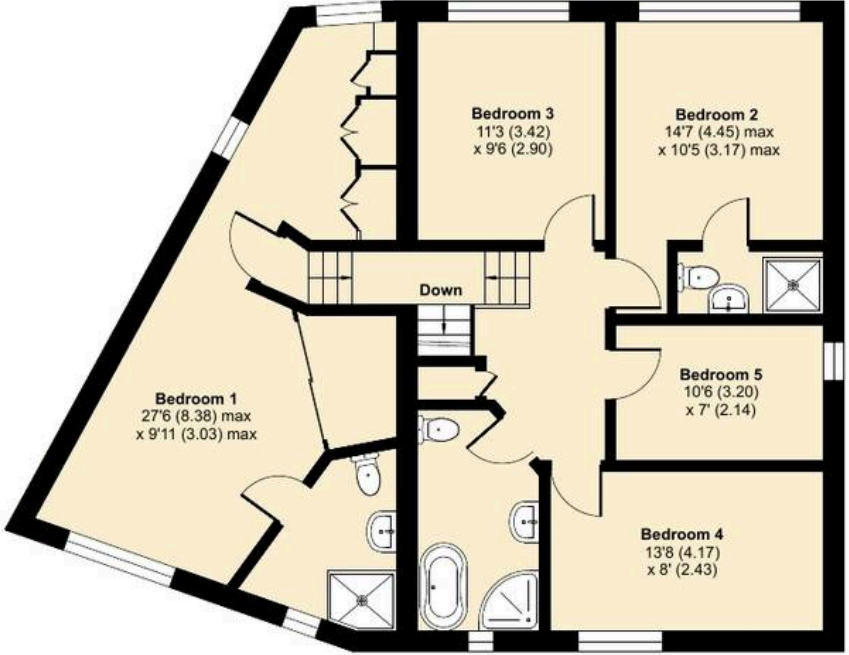
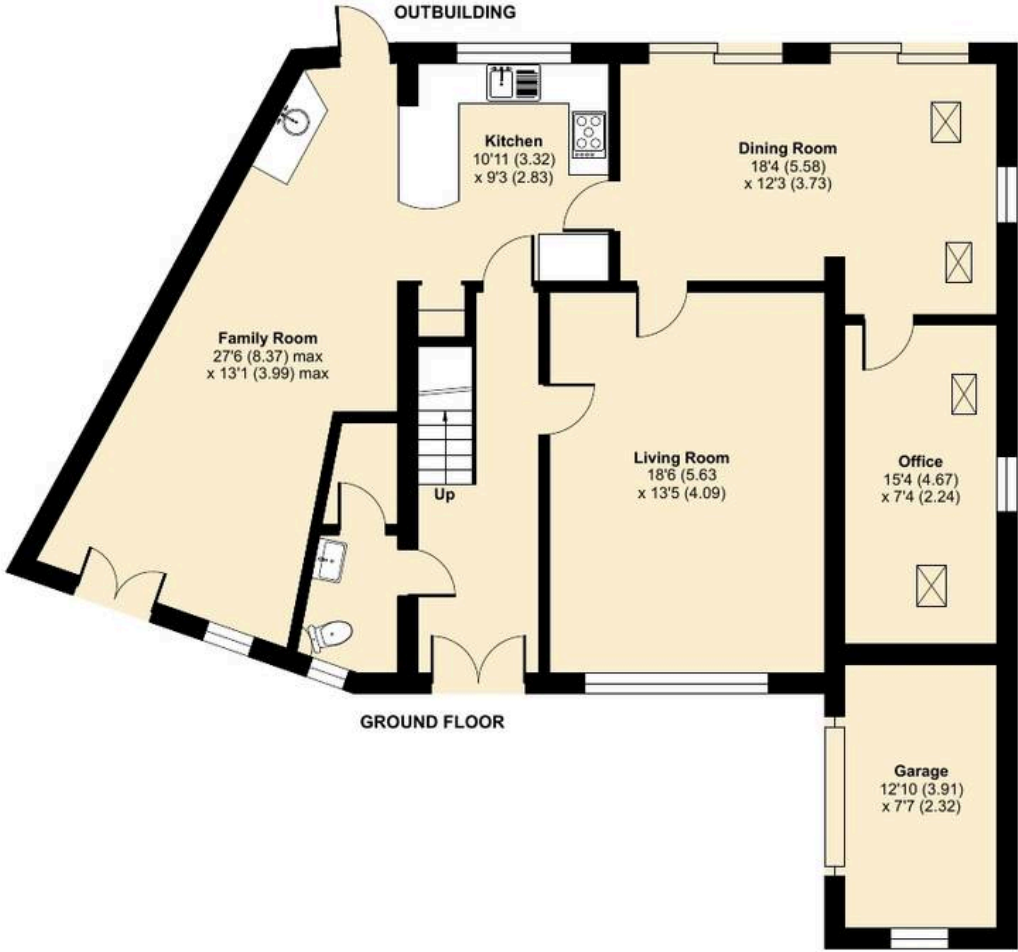
Outbuilding = 221 sq ft / 20.5 sq m

Total = 2426 sq ft / 225.3 sq m

For identification only - Not to scale



OUTBUILDING



Floor plan produced in accordance with RICS Property Measurement 2nd Edition, Incorporating International Property Measurement Standards (IPMS2 Residential). © nichecom 2026. Produced for V&H Homes. REF: 1450143

