



15 The Chapel Godfrey Gardens

Chartham, CT4 7TZ

Guide Price £180,000

GUIDE PRICE £180,000 - £190,000

A fabulous end of terrace house (Leasehold) with characterful high ceilings, offered for sale with no onward chain, Located in the popular Chartham village, the property comprises an large, open plan kitchen/living space, gf cloakroom, generous bedroom and bathroom/WC. This delightful property is accessed via the private, enclosed garden and enjoys large windows allowing for lots of light and allocated parking.

Local schools, post office and amenities are nearby along with the mainline station and many beautiful countryside walks.

Viewing

Please contact our Ashford Office on 01233 646411 if you wish to arrange a viewing appointment for this property or require further information.

- END OF TERRACE HOUSE
- LEASEHOLD - Balance of 125 years from 2004
- OPEN PLAN KITCHEN/LIVING SPACE
- FEATURE HIGH CEILINGS
- PRIVATE ENCLOSED GARDEN
- LARGE DOUBLE BEDROOM & BATHROOM/WC
- GF CLOAKROOM
- ALLOCATED PARKING



1



1

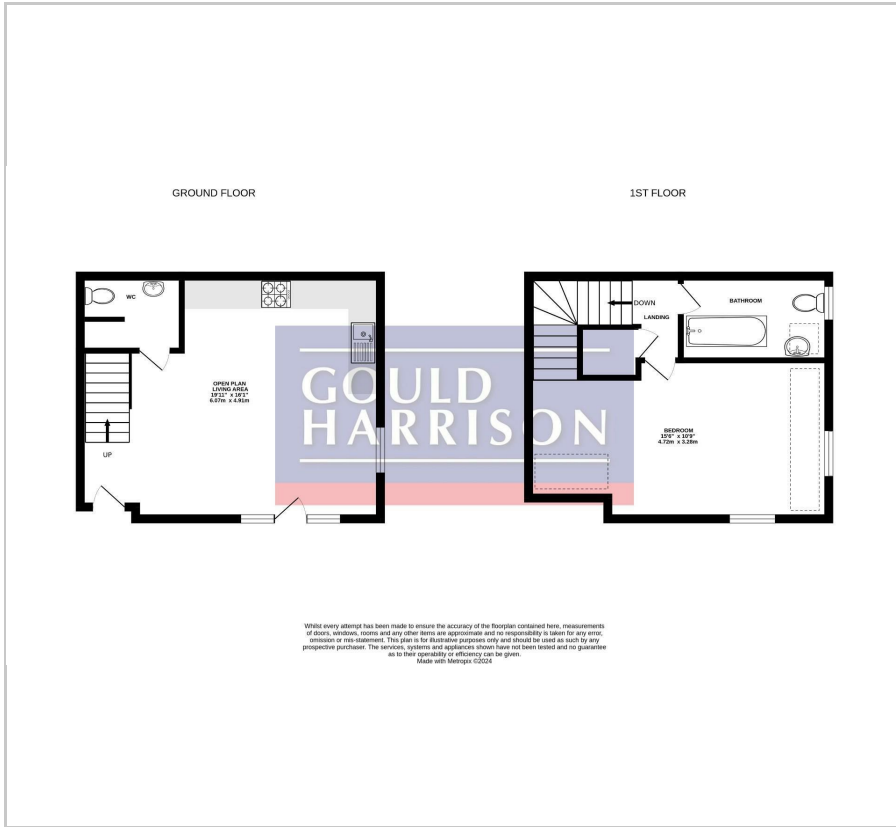


1



C

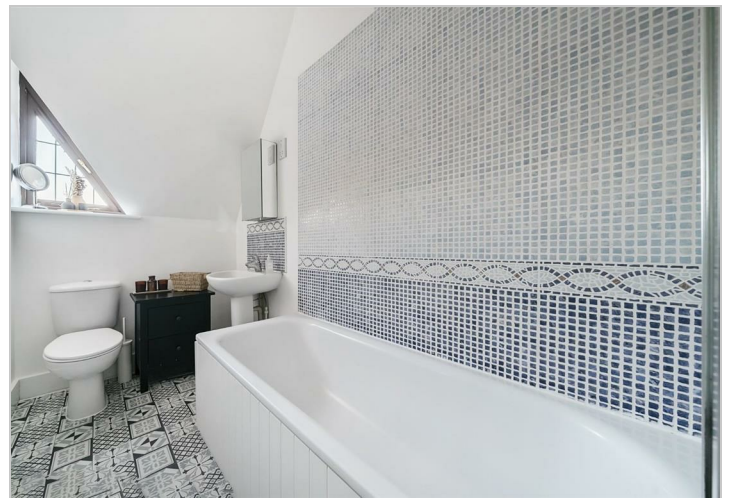
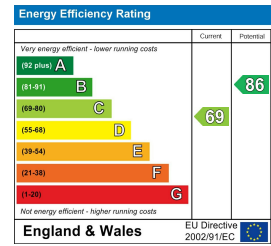
Floor Plan



Area Map



Energy Efficiency Graph



These particulars, whilst believed to be accurate are set out as a general outline only for guidance and do not constitute any part of an offer or contract. Intending purchasers should not rely on them as statements of representation of fact, but must satisfy themselves by inspection or otherwise as to their accuracy. No person in this firm's employment has the authority to make or give any representation or warranty in respect of the property.