



Luton Road

Harpenden, AL5 3BB

Charming two bedroom, mid-terrace home of circa 641 sq ft, arranged over three floors. Two bedrooms and loft room with scope for further development (STPP). Benefiting from a southwest facing private rear garden of circa 60 ft. The property is a short walk to the town centre & station and close to beautiful open countryside. Ideally located for excellent schooling.

Guide price £475,000

Luton Road

Harpenden, AL5 3BB



- Mid-terrace house
- Circa 641 sq ft
- Close to beautiful open countryside
- Arranged over three floors
- Scope for further development (STPP)
- Well placed for excellent schooling
- Two-bedrooms & loft room
- Short walk to town centre & station
- Council Tax Band D

Covered rear porch

Kitchen/Diner

15'0" x 13'1" (4.58 x 4)

Living Room

11'10" x 11'2" (3.63 x 3.41)

Utility Room

9'4" x (2.86 x)

Store

Bedroom One

10'9" x 10'9" (3.30 x 3.28)

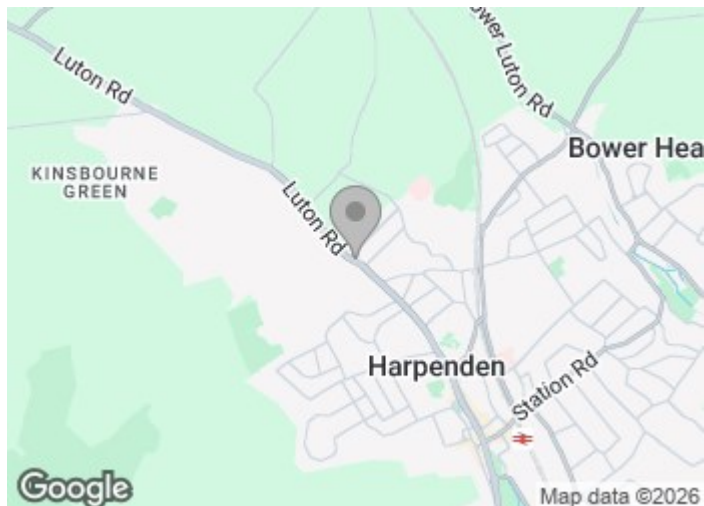
Bedroom Two

9'3" x 7'5" (2.83 x 2.27)

Bathroom

Loft Room

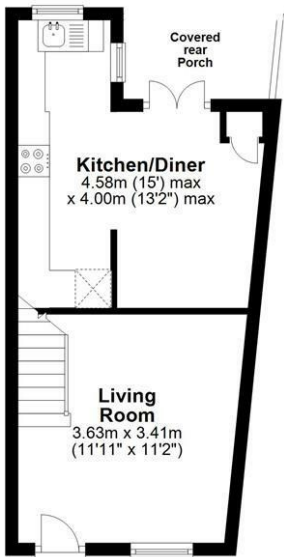
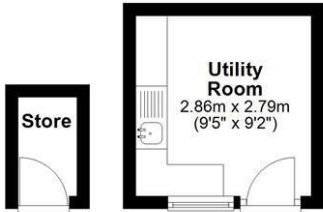
9'3" x 10'8" (2.84 x 3.27)



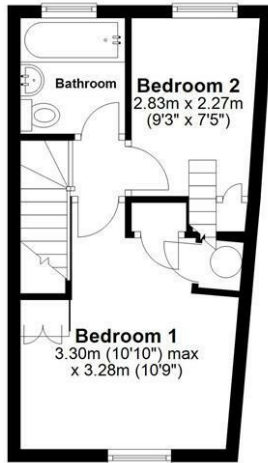


Floor Plan

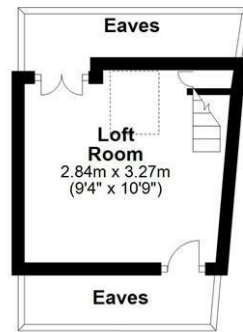
Ground Floor
Main area: approx. 25.9 sq. metres (278.5 sq. feet)
Plus outbuildings, approx. 9.4 sq. metres (101.7 sq. feet)



First Floor
Approx. 24.3 sq. metres (261.8 sq. feet)



Loft Room
Approx. 9.4 sq. metres (101.5 sq. feet)



Main area: Approx. 59.6 sq. metres (641.8 sq. feet)
Plus outbuildings, approx. 9.4 sq. metres (101.7 sq. feet)

Sketch layout only. Not to scale. Plan produced for Whittaker & Co.

Plan produced using PlanUp.

These particulars, whilst believed to be accurate are set out as a general outline only for guidance and do not constitute any part of an offer or contract. Intending purchasers should not rely on them as statements of representation of fact, but must satisfy themselves by inspection or otherwise as to their accuracy. No person in this firms employment has the authority to make or give any representation or warranty in respect of the property.

