



Lyttelton Court, Hampstead Garden Suburb, N2

Monthly Rental Of £1,900



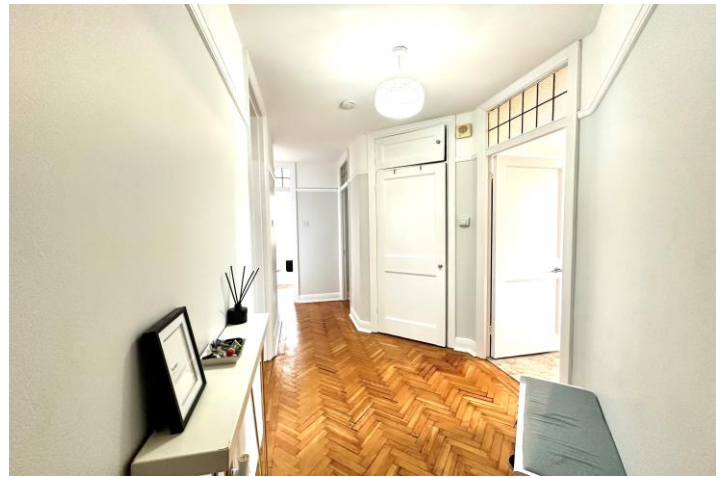
800 Finchley Road, Hampstead Garden Suburb, London, NW11 7TJ
020 8458 5000
sales@litchfields.com
www.litchfields.com

Offices also in Highgate

A very spacious two double bedroom flat on the 2nd (walk up) floor of this well maintained purpose built block, set well back from the road and easy parking on a first come first served basis. Offered in excellent internal condition and comprising entrance hall, large reception room overlooking the communal gardens to the rear. Main bedroom with free standing wardrobe, further double bedroom, modern well appointed bathroom with separate shower cubicle, ample storage and parquet wood floors throughout. Minutes walk to the local amenities and extensive bus routes of The Market Place and easy access to the North Circular A406. East Finchley Tube is approx 12 minutes walk away on the Northern line. Early viewing strongly recommended! Offered unfurnished on a long let. EPC - D.



2nd Floor Purpose Built Block | Two Double Beds | Well appointed modern bathroom with separate shower cubicle | Large reception room | Fully fitted kitchen/breakfast room | Wood floors throughout the flat | Easy Access to the North Circular Road A406 | Minutes walk to the local amenities and bus routes of The Market Place | 10 minutes walk to East Finchley Tube on the Northern Line | Unfurnished | EPC- D|



For similar properties please visit our website www.litchfields.com

Or call us on 0208 458 5000