



39 Cadogan Square | | London | SW1X 0HU

£10,617 Per month

ESON2
REAL ESTATE

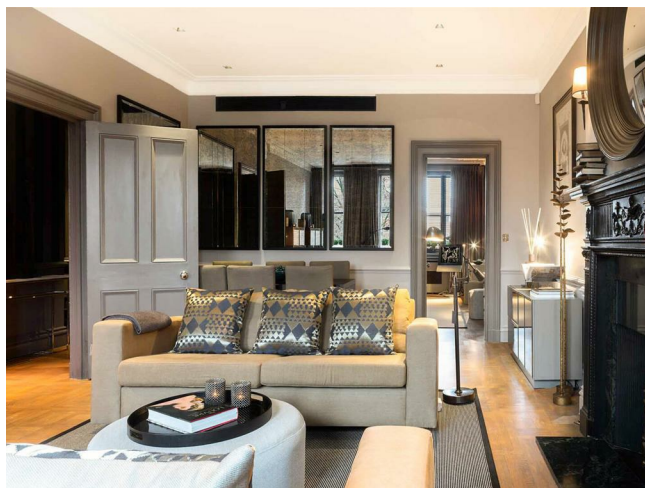
Key features

- Double-height reception room with open fireplace
- Sleek kitchen
- Fireplace
- Grand communal staircase
- Set within Cadogan Square, SW1X

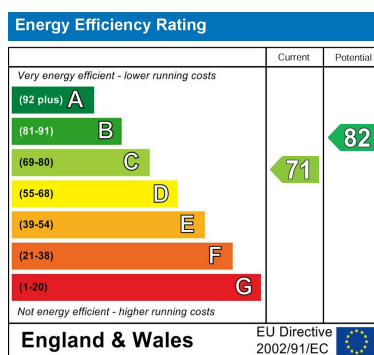
Description

A rare offering on one of Chelsea's most distinguished garden squares. Two bedrooms, two bathrooms, a generous double-height reception room with open fireplace, and a private terrace. Finished throughout from the bathrooms to the sleek bespoke kitchen and dining area. Cadogan Square living at its finest.

Directions







Council Tax Band H EPC Rating C



301 Michelin House 81 Fulham road
London
Greater London
SW3 6RD
07920 257649
fayeel@eson2.co.uk
www.eson2.co.uk