



CLIVEPEARCE
Now you're moving

3 Bedrooms

House - Detached

Asking Price

£379,950

Located in

Redruth



www.clivepearceproperty.com



Pennance Parc

Redruth | Cornwall | TR16 5TY



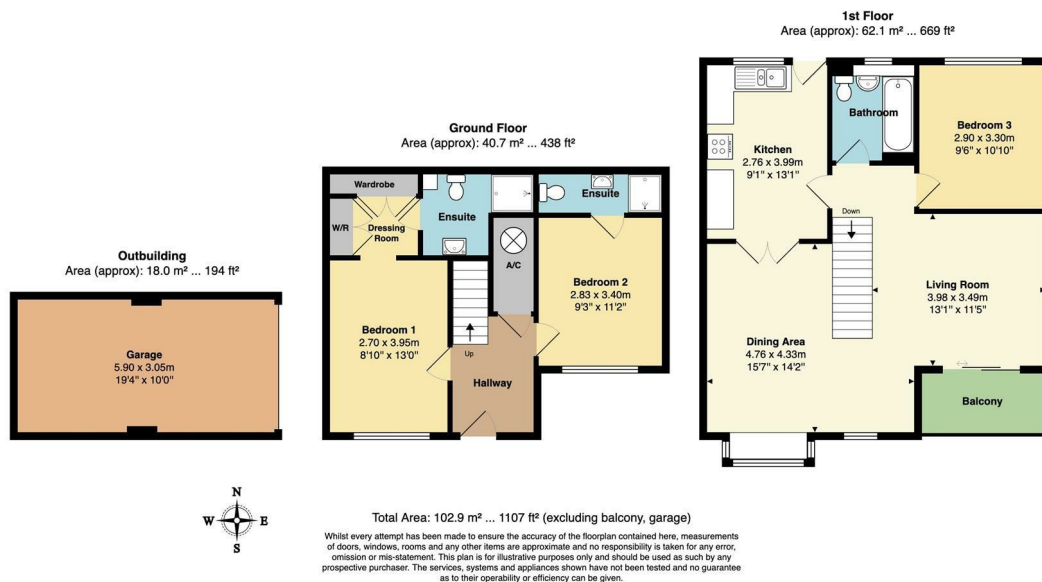
An immaculately presented three double bedroom, three bathroom detached house with reverse level designed accommodation, providing outstanding views to front from the living areas and balcony. Also there is double glazing, electric heating, detached garage with light and power and an attractive block driveway.

Pennance Parc

£379,950 Freehold



- Beautifully presented detached family home
- Lovely elevated view towards countryside and Falmouth
- Three double bedrooms, (two with en-suites)
- Detached garage and brick driveway
- Balcony off living room with stunning elevated outlook
- Occupying a delightful and tucked away corner plot
- Flexible open plan living in reverse level design
- Double glazing and electric heating
- Enclosed rear garden with feature Cornish dry stone wall



Council Tax Band D

Local Authority

Agents Note: Whilst every care has been taken to prepare these particulars, they are for guidance purposes only. All measurements are approximate and are for general guidance purposes only and whilst every care has been taken to ensure their accuracy, they should not be relied upon and potential buyers/tenants are advised to recheck the measurements.

Energy Efficiency Rating		
	Current	Potential
Very energy efficient - lower running costs		
(92 plus) A		
(81-91) B		81
(69-80) C		
(55-68) D		
(39-54) E	48	
(21-38) F		
(1-20) G		
Not energy efficient - higher running costs		
England & Wales	EU Directive 2002/91/EC	

31 Lemon Street
Truro
Cornwall
TR1 2LS



CLIVEPEARCE
Now you're moving

hello@clivepearceproperty.com

01872 272622

www.clivepearceproperty.com