

Let **UK** Home

**2 Bedrooms**

**Flat**

**Located  
in Manchester**

**£1,950 Per Month**



[pmadmin@letukhome.co.uk](mailto:pmadmin@letukhome.co.uk)

<https://www.letukhome.co.uk/>

01615219812



# 15 Silvercroft Street Manchester

M15 4XL



Let UK Home are delighted to offer this stunning two bedroom apartment in The Blade situated in the heart of New Jackson, a world class skyscraper district located at the Southern Gateway to Manchester City Centre, offering breathtaking views of the city centre.

This property comprises a large bright open plan kitchen and living room, two double bedrooms with fitted wardrobes (master en-suite), a large family sized bathroom and ample storage.

The residents of this development will benefit from a state-of-the-art gymnasium, infrared sauna, spin studio, yoga studio, residents' lounge, private dining suite, as well as a co-working space. Externally, there is a private rooftop terrace and a beautiful park at ground level. The commercial unit also offers the opportunity for shops, cafes and restaurants.

Those living at the Blade will find themselves at the heart of one of the world's most culturally diverse cities, with a number of Manchester's most popular attractions right on their doorstep. This includes: St John's Culture and Enterprise Quarter, Castlefield Urban Heritage Park, Manchester Opera House, HOME at First Street. In addition, the development is adjacent to three universities in Manchester: The University of Manchester, Manchester Metropolitan University and the Royal Northern College of Music.

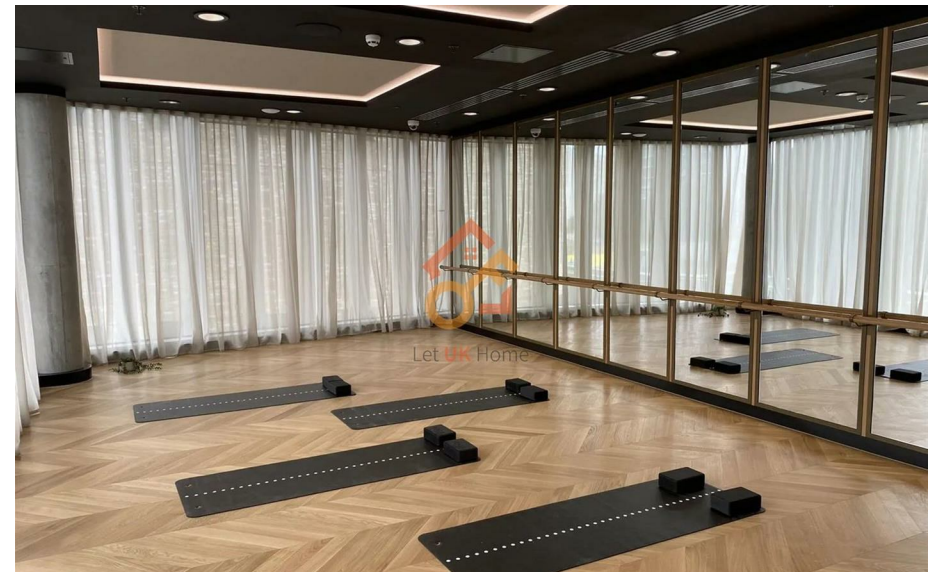
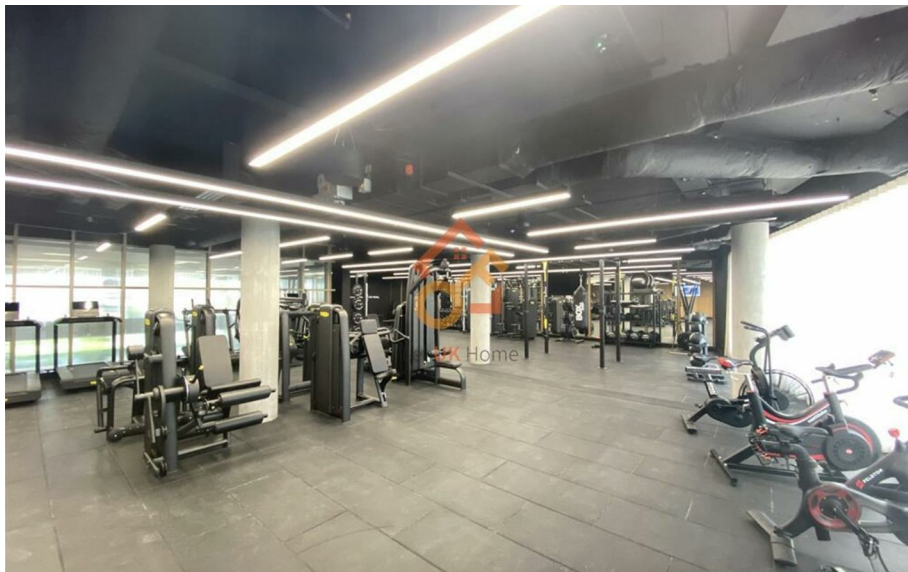
The development offers a wealth of nearby transport connections, so residents can easily make the most of everything in the local area and further afield. Deansgate's

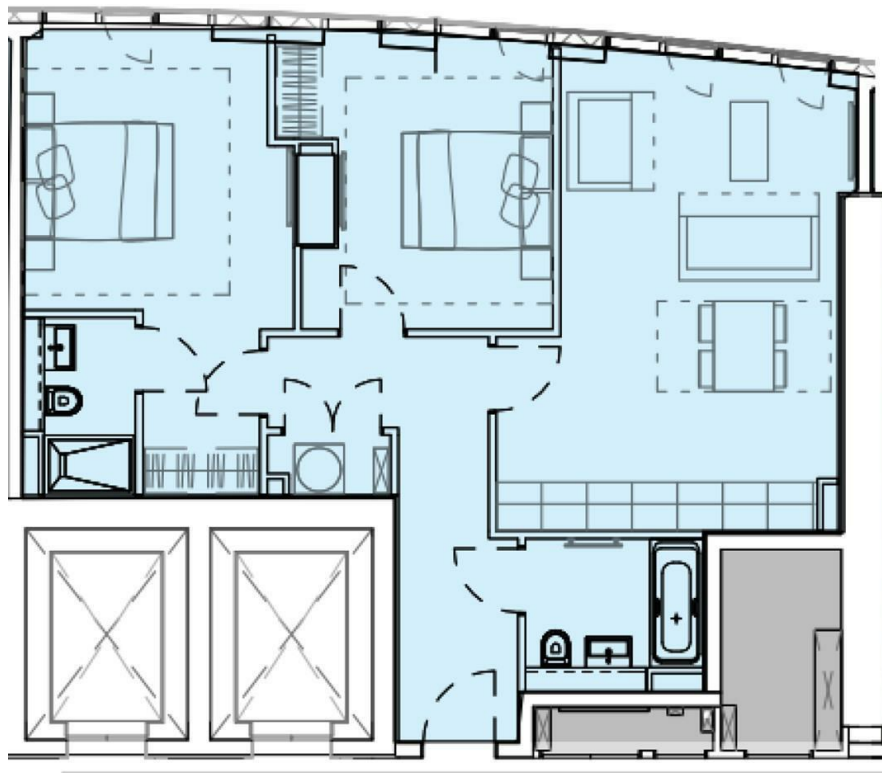
# 15 Silvercroft Street Manchester

£1,950 Per Month



- 8th Floor
- 24h Security
- The Gym
- Rooftop Terrace
- EPC Rating: B
- Concierge Service
- Private Dining Room
- Sauna & Steam Room
- Residents Lounge





**Total floor area**

**78 square metres**



Let **UK** Home

1/F, St James Tower 7 Charlotte  
Street  
Manchester  
M1 4DZ

01615219812

[pmadmin@letukhome.co.uk](mailto:pmadmin@letukhome.co.uk)

**Council Tax Band: D**

**Local Authority:**

Agents Note: Whilst every care has been taken to prepare these particulars, they are for guidance purposes only. All measurements are approximate and are for general guidance purposes only and whilst every care has been taken to ensure their accuracy, they should not be relied upon and potential buyers/tenants are advised to recheck the measurements.

Energy Efficiency Rating		Current	Potential
Very energy efficient - lower running costs			
(92 plus) <b>A</b>			
(81-91) <b>B</b>		85	85
(69-80) <b>C</b>			
(55-68) <b>D</b>			
(39-54) <b>E</b>			
(21-38) <b>F</b>			
(1-20) <b>G</b>			
Not energy efficient - higher running costs			
<b>England &amp; Wales</b>	EU Directive 2002/91/EC		

<https://www.letukhome.co.uk/>