

Greencroft Avenue

Ruislip • Middlesex • HA4 9JJ

Guide Price: £784,000



coopers
est 1986

Greencroft Avenue

Ruislip • Middlesex • HA4 9JJ

****CHAIN FREE**** Situated on Greencroft Avenue in Eastcote, this well-proportioned four-bedroom semi-detached home offers flexible family accommodation arranged over three floors. The ground floor provides a welcoming entrance hallway leading to a bright reception room, ideal for relaxing or entertaining. To the rear, a generous dining room flows into the kitchen, creating a sociable heart of the home with direct access to the garden. A practical utility room and ground floor cloakroom add to the everyday convenience. The first floor comprises three comfortable bedrooms along with a family bathroom, offering ample space for growing families or those requiring a home office. The second floor features an impressive principal bedroom with en-suite, providing a private retreat with excellent proportions and useful eaves storage as well as ample storage and a walk-in wardrobe. Greencroft Avenue is conveniently located for local shops, well-regarded schools, and transport links, making this an excellent opportunity for families and commuters alike.

SEMI DETACHED HOUSE

FOUR BEDROOMS

TWO BATHROOMS

LIVING ROOM

DINING ROOM

UTILITY ROOM

PRIVATE REAR GARDEN WITH SIDE ACCESS

DOWNSTAIRS W.C.

SOUGHT AFTER LOCATION

1,454 SQ.FT.

These particulars are intended as a guide and must not be relied upon as statements of fact. Your attention is drawn to the Important Notice on the last page.





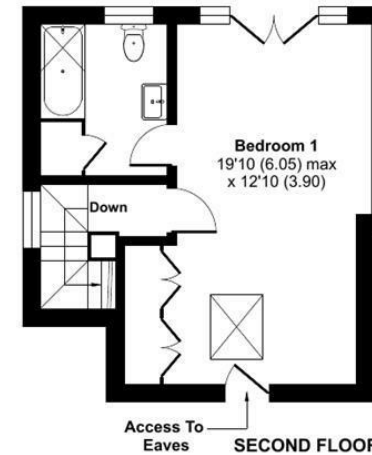
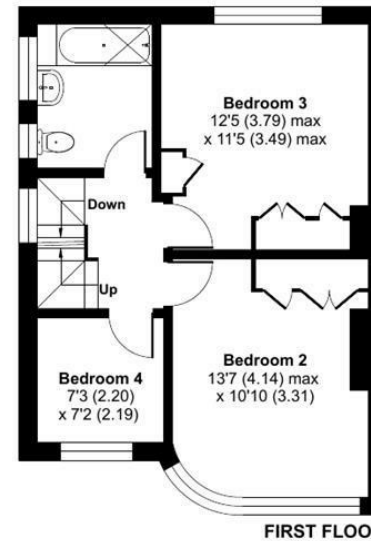
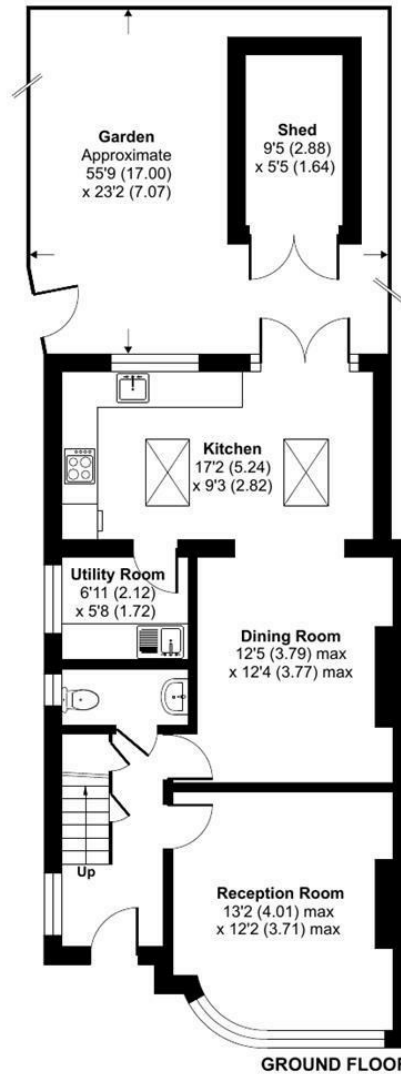
Greencroft Avenue, Ruislip, HA4

Approximate Area = 1403 sq ft / 130.3 sq m

Outbuilding = 51 sq ft / 4.7 sq m

Total = 1454 sq ft / 135 sq m

For identification only - Not to scale



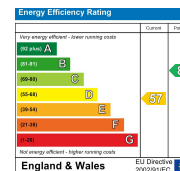
Floor plan produced in accordance with RICS Property Measurement 2nd Edition, Incorporating International Property Measurement Standards (IPMS2 Residential). © n/checom 2026. Produced for Coopers. REF: 1415119

coopers
est 1986



71 Victoria Road, Ruislip Manor,
Middlesex, HA4 9BH
ruislipmanor@coopersresidential.co.uk

CoopersResidential.co.uk



Important Notice: These particulars, whilst believed to be accurate are set out as a general outline only for guidance and do not constitute any part of an offer or contract. Intending purchasers should not rely on them as statements or representation of fact, but must satisfy themselves by inspection or otherwise has the authority to make or give any representation or warranty in respect of the property.