



HITHER GREEN LANE, SE13

£325,000

Modern flat
Two bedrooms
Elegant reception room
Separate kitchen
In the heart of Hither Green
Energy rating: d

@marshandparsons
marshandparsons.co.uk

MARSH &
PARSONS



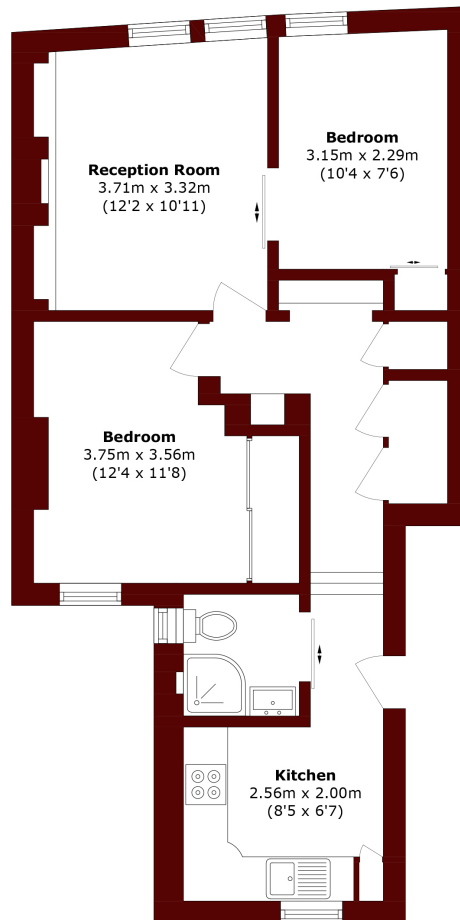
ABOUT THE PROPERTY

Immaculate and modern two bedroom flat in the heart of Hither Green. The reception feels calm and elegant with a bespoke media wall and large sash windows drawing in natural light. The separate kitchen is sleek and modern with integrated appliances and clever storage. Both bedrooms are well sized, one ideal as a guest room or home office, and the bathroom is finished to a premium standard.

A fantastic lifestyle location with cafés, independent shops and amenities on your doorstep. Hither Green station is within easy reach, providing quick links into London Bridge and the City, with Blackheath and Lewisham close by for further choice in dining, green



STEP INSIDE HITHER GREEN LANE



Total area (approx.): 52.4 sq. m (564.0 sq. ft)

Lee
020 8293 0454

Energy Rating: D We aim to make our particulars both accurate and reliable. However, they are not guaranteed; nor do they form part of an offer or contract. If you require clarification on any points then please contact us, especially if you're traveling some distance to view. Please note that appliances and heating systems have not been tested and therefore no warranties can be given as to their good working order

MARSH &
PARSONS