



www.jeffreygross.co.uk

Gloucester Road North

FILTON PARK

CARDIFF

VALE

CAERPHELLY

BRISTOL



Comments by Ms Ashton Jones



Property Specialist
Ms Ashton Jones
Branch manager

a.jones@thepropertyoutlet.com

Comments by the Homeowner



Gloucester Road

Filton Park, Bristol, BS7 0SN

Per Calendar Month

£600 Per Calendar Month



1 Bedroom(s)



3 Bathroom(s)



2518.00 sq ft



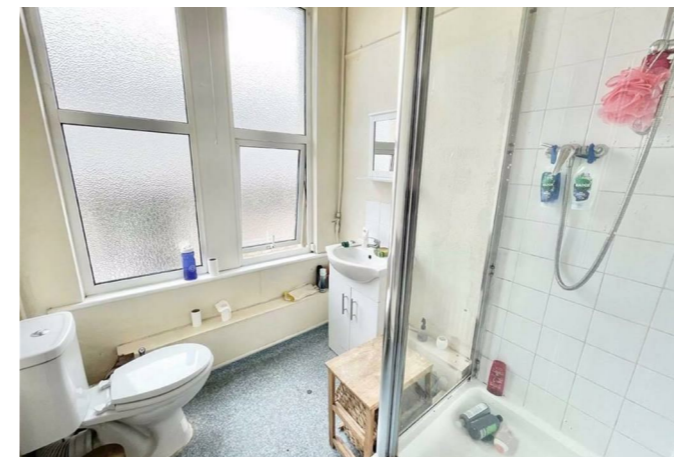
Contact our
Property Outlet Branch

0117 935 4565

* AVAILABLE 13.05.2026*

FULLY FURNISHED STUDENT SINGLE ROOMS! The Property Outlet are delighted to offer to the rental market these FANTASTIC ROOMS in a TEN BEDROOM PROPERTY. The accommodation comprises LARGE ENTRANCE HALLWAY, CLOAKROOM/WC, SHOWER ROOM & W/C, REFITTED KITCHEN, COMMUNAL LIVING ROOM & FUTHER SHOWER ROOM & W/C. Offered FURNISHED with ALL BILLS INCLUDED @ AN EXTRA £125.00 PER MONTH with a FORTNIGHTLY COMMUNAL CLEAN. WHITE GOODS that INCLUDED FRIDGE/FREEZER X2, GAS HOB/ELECTRIC OVEN & a WASHING MACHINE. Benefits include GAS CENTRAL HEATING, DOUBLE GLAZING, LARGE REAR GARDEN & OFF ROAD PARKING. . This PROPERTY is situated within FILTON PARK with good access to the UWE, local amenities & transport connections. Sorry no pets.

Holding Deposit £138.46





CARDIFF

VALE

CAERPHILLY

BRISTOL

www.jeffreygross.co.uk





Energy Efficiency Rating

	Current	Potential
Very energy efficient - lower running costs		
(92 plus) A		
(81-91) B		
(69-80) C		
(55-68) D		
(39-54) E	52	
(21-38) F		
(1-20) G		
Not energy efficient - higher running costs		

78

England & Wales EU Directive 2002/91/EC