

# Fletcher & Company

1 Highfield Road, Derby, Derbyshire, DE22 1GY

---

Offers Around £595,000

Freehold

---



- Spacious Living Accommodation
- Sash Windows with Secondary Double Glazing
- Gas Central Heating
- Entrance Hall with Oak Flooring
- Two Good Sized Reception Rooms to Front with Log Burners
- Full Width Open Plan Living Kitchen to Rear
- Master Bedroom with En-Suite Shower Room
- Three Further Double Bedrooms & Bathroom
- Spacious Semi-Galleried Landing
- Private Courtyard Garden & Recently Constructed Detached Garage







## Summary

An impressive, four double bedroom, Victorian, double fronted, detached residence occupying a highly convenient and sought after location on Highfield Road in the north west end of Derby.

Attractive, four double bedroom, double fronted, Victorian, detached residence located just off Kedleston Road on Highfield Road. The property features high ceilings, sash windows and original features. The gas central heated accommodation comprises entrance hall without flooring, two reception rooms to front both with log burners and fully open plan living kitchen to rear with lounge area, dining area and fitted kitchen with pantry off and access to cellar. The first floor accommodation features a semi-galleried landing, master bedroom with en-suite shower room, three further double bedrooms and bathroom.

To the rear of the property is a private, walled, courtyard style garden. The property also benefits from a recently constructed, detached garage to the side of the property which can be reached via a shared access with two neighbouring properties.

# F&C

## The Location

The property's location on Highfield Road gives easy access to a full range of amenities in Derby City centre. There is a varied selection of schooling including Markeaton primary, Emmanuel primary, St Benedict's secondary, Woodlands secondary in Allestree and Landau Forte in Derby. There is a regular bus service running along Kedleston Road into Derby City centre. Also worthy of note is the property's convenient location to both Markeaton Park and Darley Park, the latter offers a very pleasant loop along the river Derwent and through Darley Abbey Mills which has a selection of restaurants and bars. The property is also convenient for A38 and A52.

## Accommodation

### Ground Floor

#### Entrance Hall

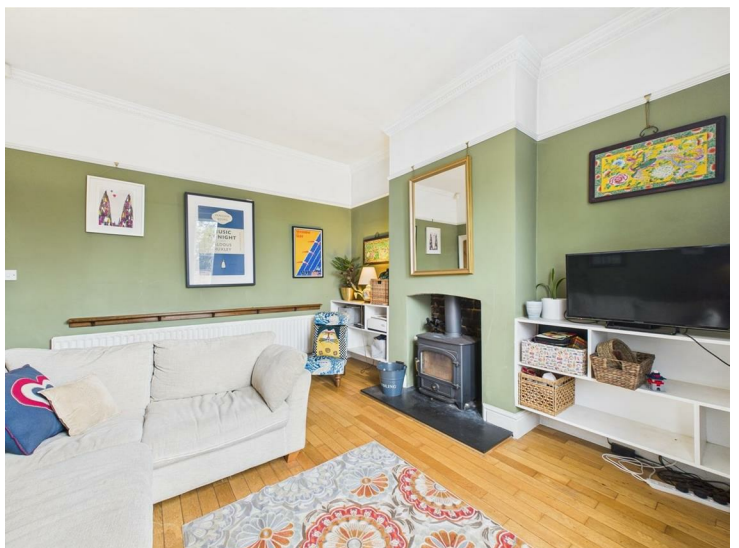
13'9" x 5'10" (4.20 x 1.78)

A panelled entrance door with double glazed fanlight provides access to hallway with original manual pull doorbell, oak floor covering, period style central heating radiator and staircase to first floor.

#### Sitting Room

13'5" x 12'1" (4.10 x 3.70)

With feature fireplace incorporating exposed brick interior, raised hearth with solid fuel cast iron stove, central heating radiator, decorative coving, picture rail, oak flooring and sash window to front with secondary double glazing.





### Study/Family Room

13'6" x 11'3" (4.13 x 3.44)

With feature fireplace with exposed brick interior, stone hearth and solid fuel cast iron stove, period style central heating radiator, decorative coving, picture rail and sash window to front with secondary double glazing.



### Impressive Open Plan Living Kitchen

28'9" x 13'0" (8.78 x 3.97)



### Lounge Area

Featuring cast iron fire surround, tile slips and raised hearth, bespoke storage to either recess, slate tile flooring, part wall panelling, floor to ceiling period style central heating radiator and sash window to rear with secondary double glazing.



### Dining Area

With spacious dining area, floor to ceiling period style central heating radiator, continuation of the slate tile flooring, useful understairs storage cupboard/pantry. The pantry gives access to the cellar which houses the electricity circuit board for the ground floor and garage.





### **Kitchen Area**

With granite worktops and central island/breakfast bar with storage cupboards and drawers, further wall mounted open storage, inset stainless steel sink unit with mixer tap, tile splashbacks, appliance spaces suitable for a gas range cooker, washing machine/tumble dryer and fridge freezer, sash window to rear with secondary double glazing, picture sealed unit double glazed window and panelled and glazed door to garden.



### **First Floor Landing**

17'11" x 5'10" (5.48 x 1.79)

A semi-galleried landing with feature balustrade, period style central heating radiator, picture rail and airing cupboard with appliance space suitable for washing machine and storage.

### **Bedroom One**

13'0" x 11'1" (3.98 x 3.39)

With period style central heating radiator, picture rail, sash window to rear with secondary double glazing and bifold doors to en-suite.



### **En-Suite Shower Room**

8'11" x 5'6" (2.74 x 1.69)

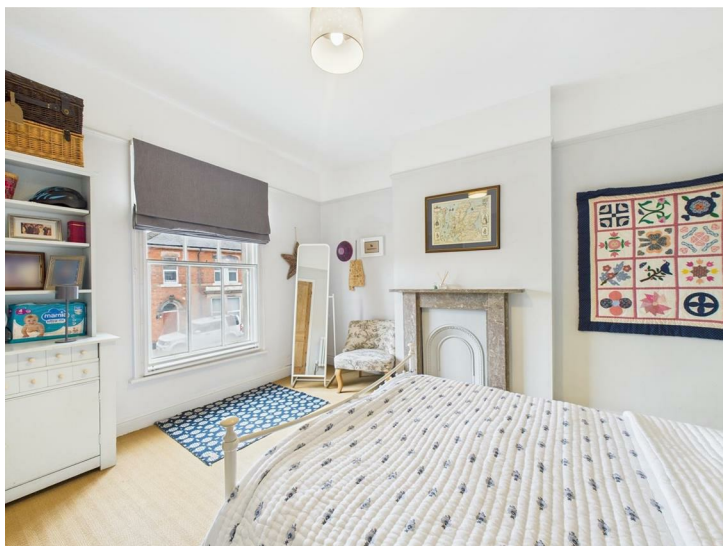
With low flush WC, pedestal wash handbasin, large walk-in shower cubicle, chrome towel radiator, recessed ceiling spotlighting and sash window to rear with secondary double glazing.



### Bedroom Two

13'4" x 11'3" (4.08 x 3.43)

With feature marble fire surround, period style central heating radiator, picture rail and sash window to front with secondary double glazing.



### Bedroom Three

12'0" x 10'5" (3.67 x 3.19)

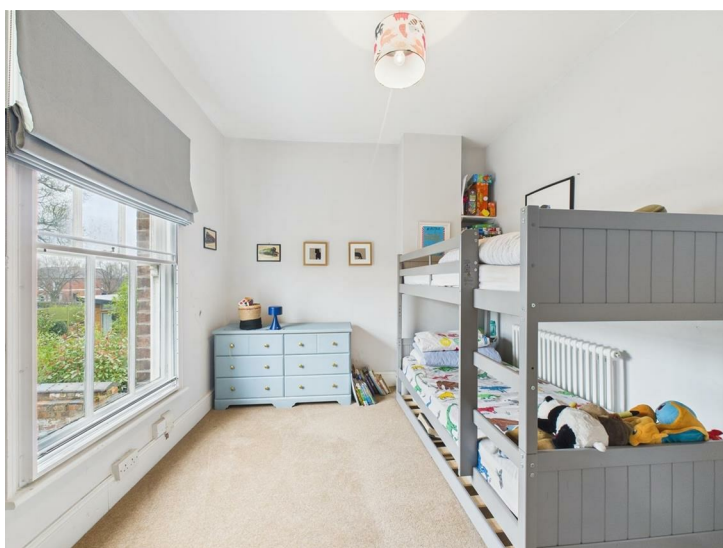
With feature marble fire surround, period style central heating radiator and sash window to front with secondary double glazing.



### Bedroom Four

11'10" x 9'4" (3.61 x 2.86)

With period style central heating radiator and sash window to rear with secondary double glazing.



## Bathroom

8'8" x 6'8" (2.66 x 2.05)

Partly tiled with a white suite comprising low flush WC, pedestal wash handbasin, panelled bath with shower over, chrome towel radiator, recessed ceiling spotlighting and sash window side.





## Outside

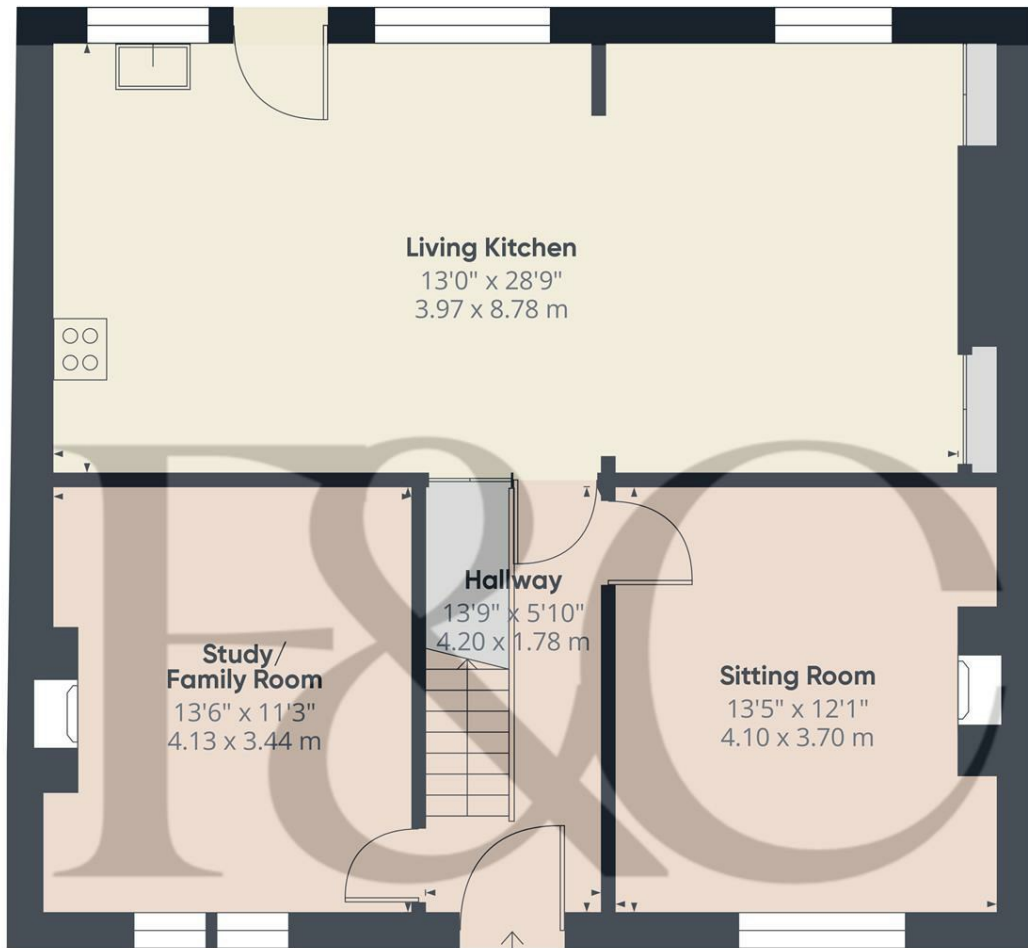
To the rear of the property is a very pleasant, private, walled, courtyard garden with paved terrace and raised brick edge border containing plants, shrubs and climbing plants, outdoor lighting, cold water hose tap, greenhouse and brick built storage building. A door leads to a secure side access/bin store and further cold water outdoor hose tap.

To the front of the property is a low maintenance, palisaded garden with brick wall. To the side of the property is a shared access (with two neighbouring properties) which leads to a recently constructed, detached garage which is large enough to house a sizeable vehicle and also has an electric charging point and remote sensor lighting.



Council Tax Band E





Floor 0

Approximate total area<sup>(1)</sup>

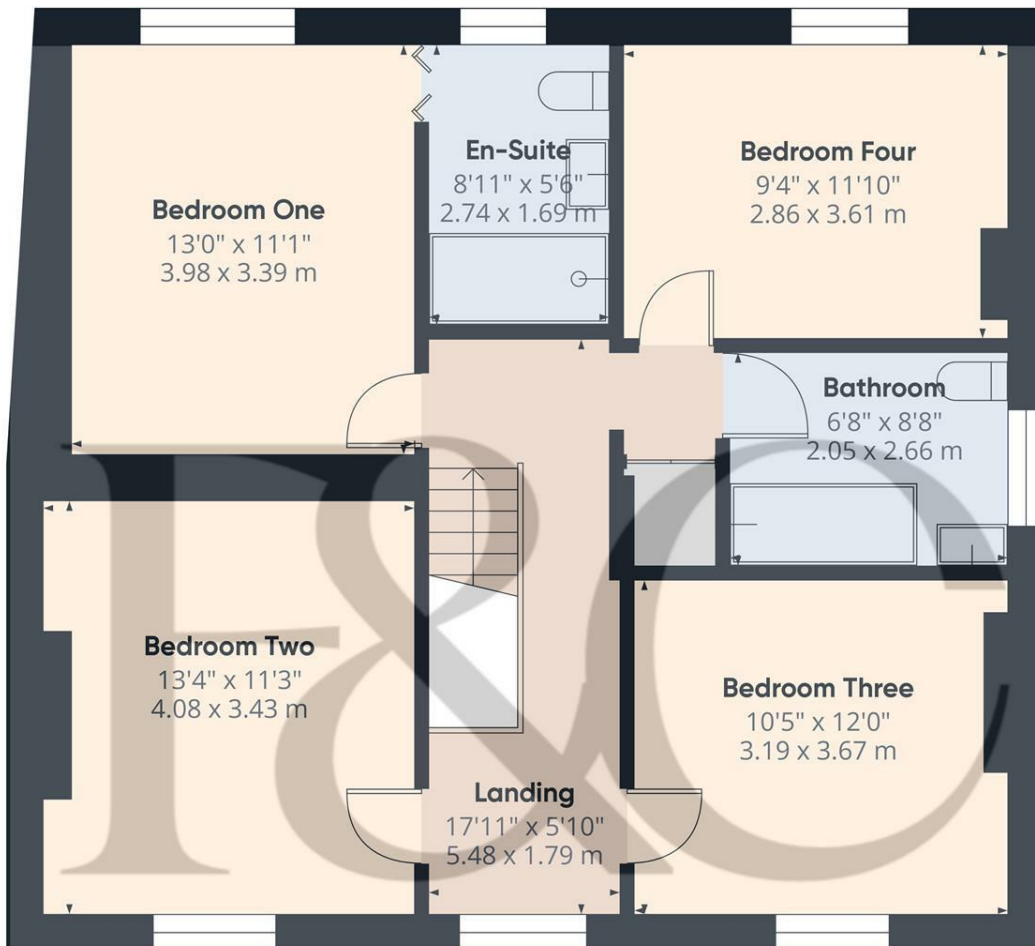
775.44 ft<sup>2</sup>  
72.04 m<sup>2</sup>

(1) Excluding balconies and terraces.

While every attempt has been made to ensure accuracy, all measurements are approximate, not to scale. This floor plan is for illustrative purposes only.

Calculations were based on RICS IPMS 3C standard. Please note that calculations were adjusted by a third party and therefore may not comply with RICS IPMS 3C.

GIRAFFE360



Floor 1

Approximate total area<sup>(1)</sup>

735.51 ft<sup>2</sup>  
68.33 m<sup>2</sup>

(1) Excluding balconies and terraces.

While every attempt has been made to ensure accuracy, all measurements are approximate, not to scale. This floor plan is for illustrative purposes only.

Calculations were based on RICS IPMS 3C standard. Please note that calculations were adjusted by a third party and therefore may not comply with RICS IPMS 3C.

GIRAFFE360





## Energy Efficiency Rating

	Current	Potential
Very energy efficient - lower running costs		
(92 plus) <b>A</b>		
(81-91) <b>B</b>		<b>85</b>
(69-80) <b>C</b>		
(55-68) <b>D</b>	<b>66</b>	
(39-54) <b>E</b>		
(21-38) <b>F</b>		
(1-20) <b>G</b>		
Not energy efficient - higher running costs		
<b>England &amp; Wales</b>	EU Directive 2002/91/EC	

### Duffield Office

Duffield House  
Town Street  
Duffield  
Derbyshire  
DE56 4GD

01332 843390  
duffield@fletcherandcompany.co.uk

### Derby Office

15 Melbourne Court  
Millennium Way  
Pride Park  
Derby  
DE24 8LZ

01332 300558  
derby@fletcherandcompany.co.uk

### Willington Office

3 The Boardwalk  
Mercia Marina  
Findern Lane  
Willington  
Derbyshire  
DE65 6DW

01283 241500  
willington@fletcherandcompany.co.uk

1 Highfield Road  
Derby  
Derbyshire  
DE22 1GY

Council Tax Band: E  
Tenure: Freehold

