



PARKWAY, NW1

£580,000

- Two double bedrooms
- No onward chain
- Three bathrooms
- Open plan living room
- Modern finish
- 987 year lease

@marshandparsons
marshandparsons.co.uk

MARSH &
PARSONS



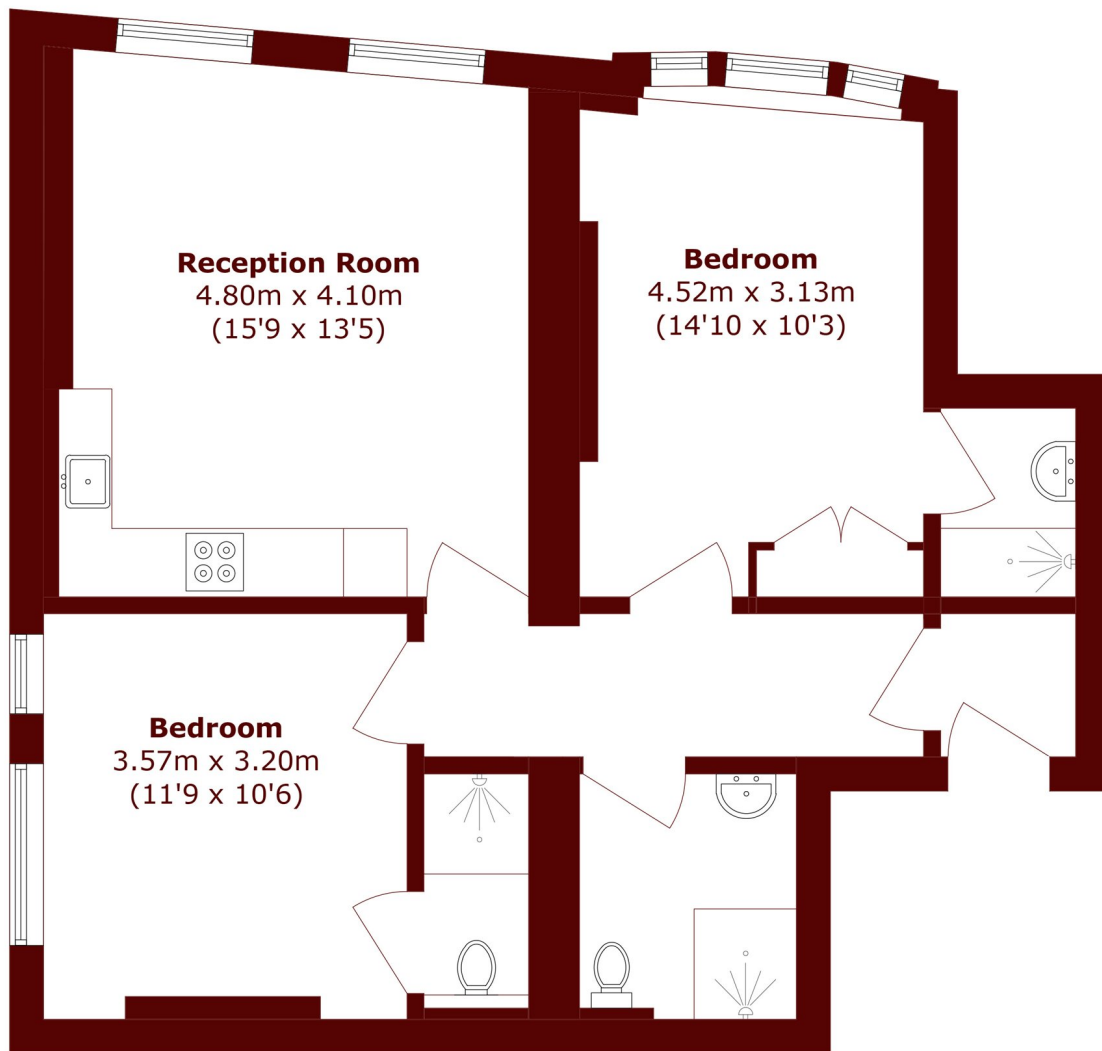
ABOUT THE PROPERTY

A well-presented two-bedroom apartment in the heart of Camden. The property features two spacious double bedrooms, each with its own en-suite bathroom, along with a separate family bathroom. It also benefits from an open-plan living area and is offered with no onward chain.

Parkway is situated in central Camden, within minutes of its underground and overground stations, as well as being within walking distance of its popular market, the Canal and Primrose Hill.



STEP INSIDE PARKWAY



Total area (approx.): 65.6 sq. m (706.1 sq. ft)

Camden
020 7244 2200

Energy Rating: C We aim to make our particulars both accurate and reliable. However, they are not guaranteed; nor do they form part of an offer or contract. If you require clarification on any points then please contact us, especially if you're traveling some distance to view. Please note that appliances and heating systems have not been tested and therefore no warranties can be given as to their good working order

MARSH &
PARSONS