

## Kingsgate Road, NW6

£499,950

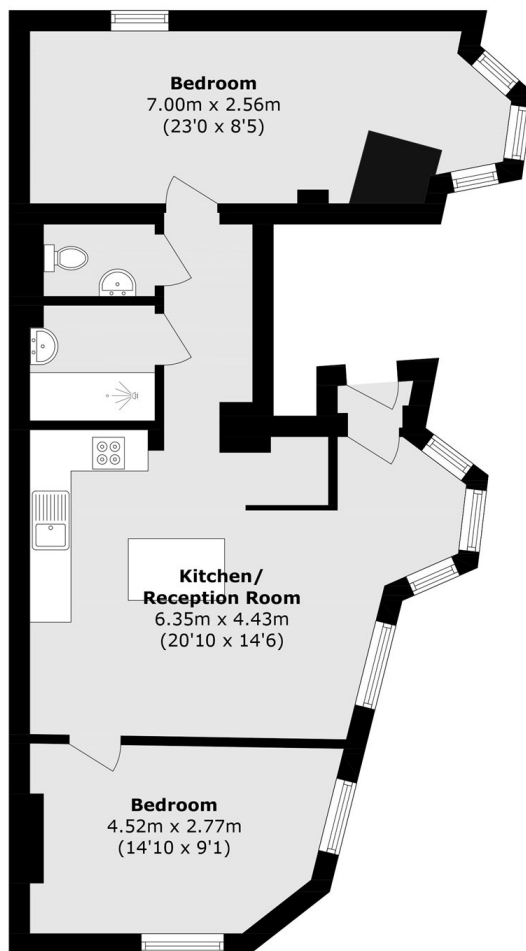
An exciting opportunity to acquire this first floor Victorian conversion offering two generous double bedrooms and a open-plan kitchen/reception ideal for modern living. Offered with no onward chain and a share of freehold.

Kingsgate Road is ideally located for excellent transport links via West Hampstead Underground Station, West Hampstead Thameslink Station and West Hampstead Overground Station, with green spaces including Kilburn Grange Park and Hampstead Heath nearby.

### Features

- Two Bedrooms
- Victorian Conversion
- First Floor
- Close To Station
- Share Of Freehold
- No Onward Chain

# Kingsgate Road, London, NW6



Total area (approx.): 63.8 sq. m (686.7 sq. ft)