



Let **UK** Home

2 Bedrooms

Flat

Located in London

£480,000



info@letukhome.co.uk

<https://www.letukhome.co.uk/>

01795 358 886



North End Road, Wembley London

HA9 0LR



Let UK Home are delighted to offer this stunning 2-bedroom apartment in Maclaren Court, part of the Wembley Parade development.

This property comprises a large bright open plan kitchen and living room, two double bedrooms(master en-suite), a large family sized bathroom and ample storage.

The apartment is equipped with a security video entry system to ensure the safety of residents. In addition, there are public courtyards that provide residents with space to relax.

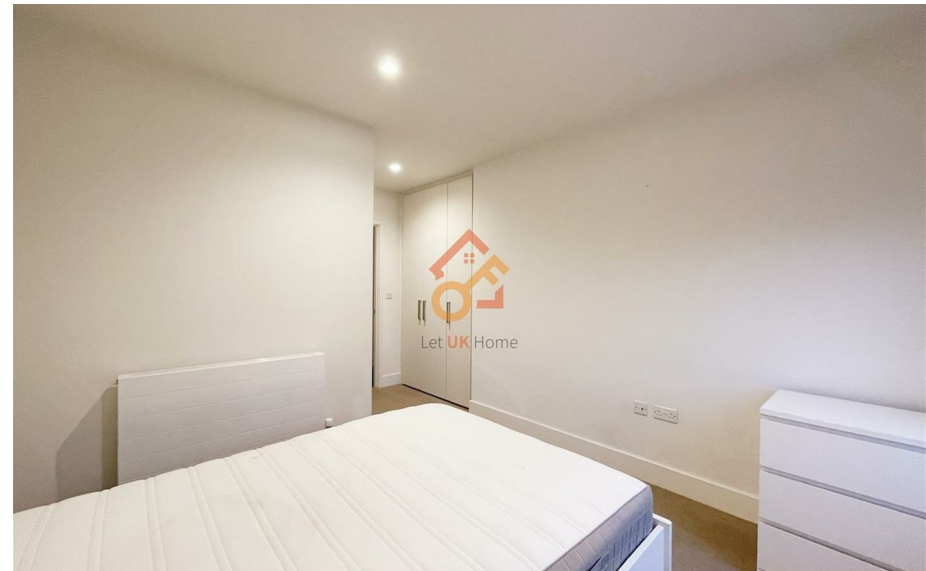
Not far from the apartment is Wembley Park, a park with large green spaces and beautiful natural scene and a good place for exercise and rest. From the apartment, you can reach Wembley Stadium and London Designer Shopping Center within walking distance. The surrounding supporting facilities such as cinemas, supermarkets, restaurants, and commercial streets are very complete, which can fully meet the daily entertainment consumption needs of local residents.

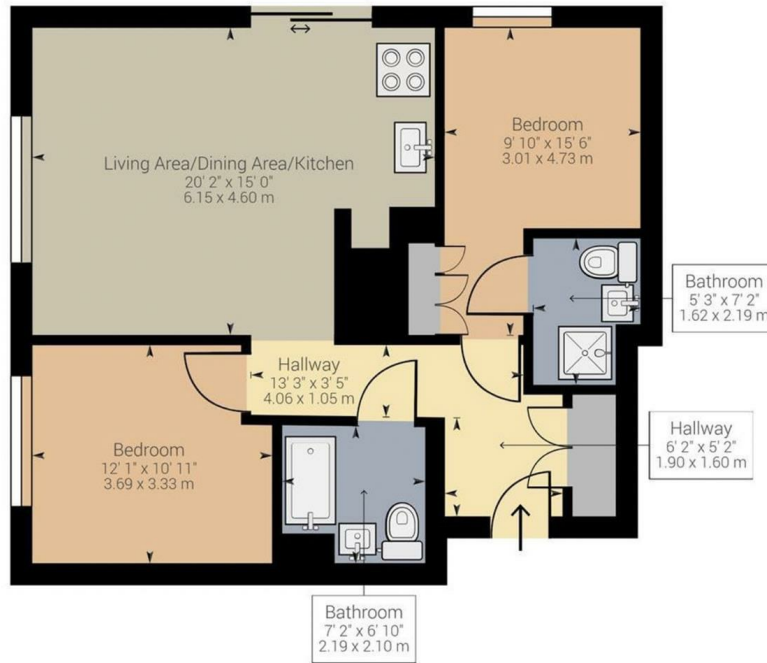
North End Road, Wembley London

£480,000 Leasehold



- 3rd Floor
- Communal Courtyard
- Close to Transport Links
- Video Entry
- Close to Local Shops
- EPC Rating: B





Approximate net internal area: 736.95 ft² / 68.46 m²



Let **UK** Home

3F 2 Eastbourne Terrace
 Paddington
 London
 W2 6LG

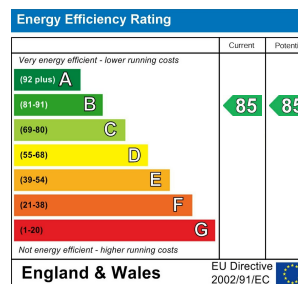
01795 358 886

info@letukhome.co.uk

Council Tax Band: D

Local Authority:

Agents Note: Whilst every care has been taken to prepare these particulars, they are for guidance purposes only. All measurements are approximate and are for general guidance purposes only and whilst every care has been taken to ensure their accuracy, they should not be relied upon and potential buyers/tenants are advised to recheck the measurements.



<https://www.letukhome.co.uk/>