



Melbury Avenue, UB2

£849,000

Situated in the heart of the ever popular Norwood Green, this three bedroom, semi detached property offers over 1300 sq.ft of living space.

The property features a welcoming through lounge off of the spacious entrance hallway, a separate kitchen and a conservatory featuring a downstairs WC.

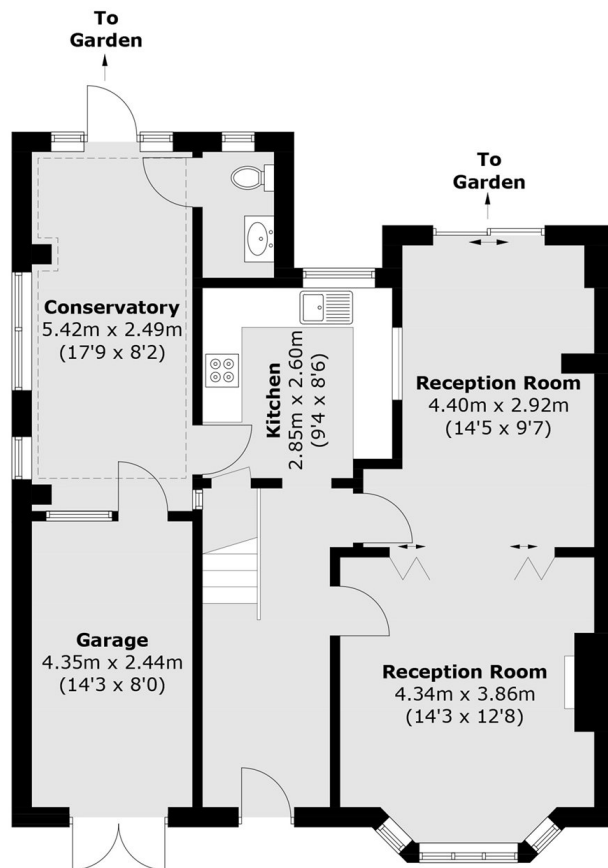
Upstairs, you will find two double bedrooms, a single bedroom and a family bathroom. The property is completed with a side garage, off street parking, a sizeable rear garden. There is potential to extend (STPP).

The property is within walking distance of the outstanding Three Bridges Primary School.

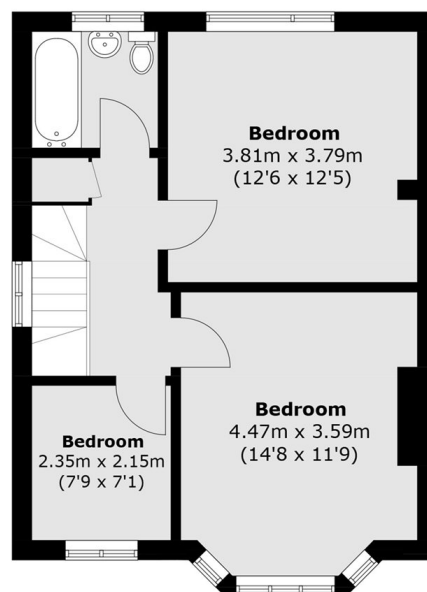
Features

- Semi Detached
- South Facing Garden
- Potential to Extend (STPP)
- Off Street Parking
- Side Garage
- Outstanding School Catchment

Melbury Avenue, Southall, UB2



Ground Floor



First Floor

Total area (approx.): 125.7 sq. m (1,353.0 sq. ft)
(Including Garage)