



19 Zurich Avenue

Biddulph, ST8 7FA

Price £260,000



Carters are pleased to offer for sale this beautifully maintained three-bedroom townhouse, providing generous and well-planned accommodation across three floors. Enhanced by a range of quality improvements by the current owners, the property offers stylish, move-in-ready living in a popular residential setting, conveniently positioned for local amenities, reputable schools, and excellent transport connections.

The accommodation begins with a welcoming entrance hall leading to a contemporary fitted kitchen, equipped with a selection of integrated appliances and ample cupboard space. To the rear, the main living room provides a comfortable and inviting environment for everyday family life, featuring a bespoke media wall with an inset electric fireplace. Beyond, the impressive orangery creates a versatile additional living area, ideal as a dining space, garden room, or family room, with direct access onto the rear garden. A convenient guest cloakroom completes the ground-floor layout.

On the first floor are two well-sized bedrooms, both offering excellent flexibility for family members, guests, or home working. These rooms are served by a recently updated family bathroom, finished with a modern suite and complementary fittings.

The top floor is dedicated to the spacious principal bedroom suite, creating a private sanctuary away from the rest of the home. Benefitting from fitted wardrobes, a contemporary en-suite shower room, and a front-facing dormer window, the room enjoys an abundance of natural light while providing excellent storage and comfort.

Outside, the rear garden has been attractively landscaped to offer a practical yet appealing outdoor space, incorporating a lawned area, patio seating space, and established planted borders. The property also benefits from an attached garage and driveway parking for two vehicles.

19 Zurich Avenue

Biddulph, ST8 7FA

Price £260,000



Entrance Hallway

Composite double glazed entrance door to the front elevation.

Stairs to the first floor. Radiator. Tiled flooring.

Kitchen

9' x 8'9" (2.74m x 2.67m)

UPVC double glazed window to the front elevation with a made to measure blind.

Contemporary fitted kitchen incorporating a range of wall, base and drawer units. Wood effect laminate work surfaces. Stainless steel one and a half bowl sink with a mixer tap and a drainer. Built in electric oven. Built in four ring gas hob. Built in extractor hood. Integrated fridge freezer. Integrated dishwasher. Space and plumbing for a washing machine. Recessed ceiling down lighters. Radiator. Tiled flooring.

Living Room

15'8" x 10'10" (4.78m x 3.30m)

UPVC double glazed window to the rear elevation.

Under stairs storage cupboard. Bespoke media wall having an inset electric fire. Two radiators. Opening to the Orangery.

Orangery Extension

14'7" x 12'9" (4.45m x 3.89m)

UPVC double glazed french doors to the side elevation. UPVC double glazed windows to the side and rear elevations. Insulated roof and walls. Panel radiator. Laminate flooring.

W.C

UPVC double glazed window to the front elevation.

Pedestal wash hand basin and a recessed w.c. Mirror fronted storage cabinet. Radiator. Tiled flooring.

Stairs and Landing

Feature wall paneling finished with a dado rail. Access to stairs to the second floor.

Bedroom Two

9'2" x 12'4" (2.79m x 3.76m)

UPVC double glazed window to the rear elevation. Radiator.

Bedroom Three

7'7" x 9'3" (2.31m x 2.82m)

UPVC double glazed window to the front elevation. Radiator.

Family Bathroom

7'4" x 6'1" (2.24m x 1.85m)

UPVC double glazed window to the rear elevation.

Recently installed three piece family bathroom suite comprising of; a panel bath with a shower over and a hand held shower, vanity basin unit with a storage drawer under and a recessed w.c. Fitted storage cabinet. Partially tiled walls. Extractor fan. Chrome heated towel rail. Tiled flooring.

Stairs to the Second Floor

UPVC double glazed window to the front elevation. Radiator.

Master Bedroom

12'2" x 15'8" (3.71m x 4.78m)

UPVC double glazed window to the front elevation.

Built in wardrobes. Access to the loft. Radiator.

En Suite

7'7" x 6'3" (2.31m x 1.91m)

Velux roof light to the rear elevation.

Shower enclosure. Pedestal wash hand basin. Recessed w.c. Extractor fan. Recessed ceiling down lighters. Partially tiled walls. Chrome heated towel rail. Tiled flooring.

Garage

9' x 18'5" (2.74m x 5.61m)

Up and over garage door to the front elevation. Hardwood single glazed entrance door to the rear elevation.

Power and lighting.

Externally

To the front of the property, a driveway provides off-road parking and access to the garage, together with an external water tap.

The rear enjoys a private, enclosed garden featuring a lawn, paved patio seating area, and raised flower borders planted with a variety of seasonal plants and shrubs. Additional benefits include a composite storage shed and an external double power socket.

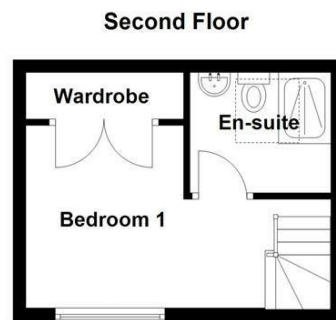
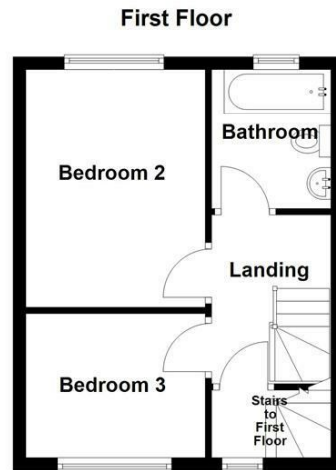
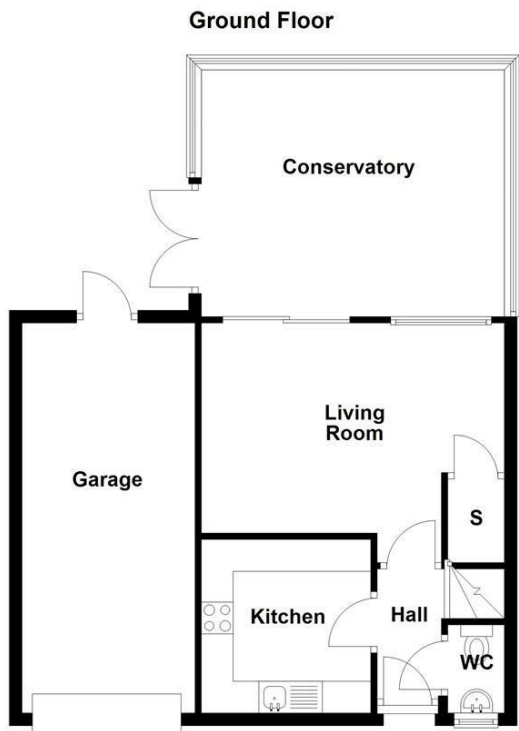
Additional Information

Total Floor Area: 81 Square Meters / 871 Square Foot.

Disclaimer

Although we try to ensure accuracy, these details are set out for guidance purposes only and do not form part of a contract or offer. Please note that some photographs have been taken with a wide-angle lens. A final inspection prior to exchange of contracts is recommended. No person in the employment of Carters Estate Agents Ltd has any authority to make any representation or warranty in relation to this property. We obtain some of the property information from land registry as part of our instruction and as we are not legal advisers we can only pass on the information and not comment or advise on any legal aspect of the property. You should take advice from a suitably authorised licensed conveyancer or solicitor in this respect.

Tel: 01782 470391



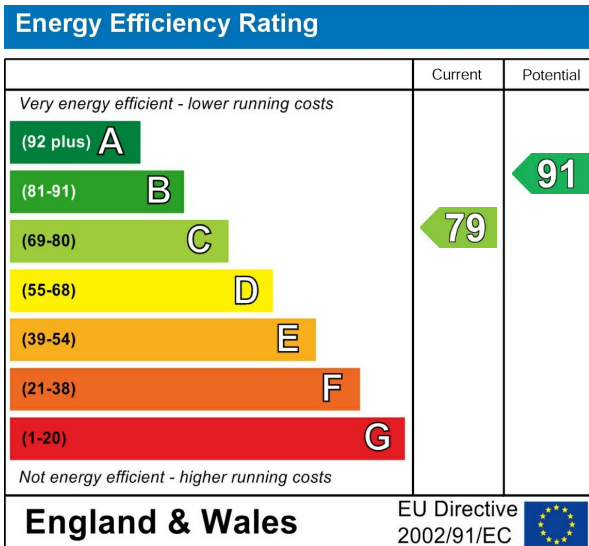
Road Map



Hybrid Map



Energy Efficiency Graph



Viewing

Please contact our Carters Estate Agents Office on 01782 470391 if you wish to arrange a viewing appointment for this property or require further information.

These particulars, whilst believed to be accurate are set out as a general outline only for guidance and do not constitute any part of an offer or contract. Intending purchasers should not rely on them as statements of representation of fact, but must satisfy themselves by inspection or otherwise as to their accuracy. No person in this firm's employment has the authority to make or give any representation or warranty in respect of the property.

101 High Street Biddulph Stoke on Trent Staffs ST8 6AB
01782 470391
www.carters-estateagents.co.uk