



## Coram Street, WC1N

£550,000

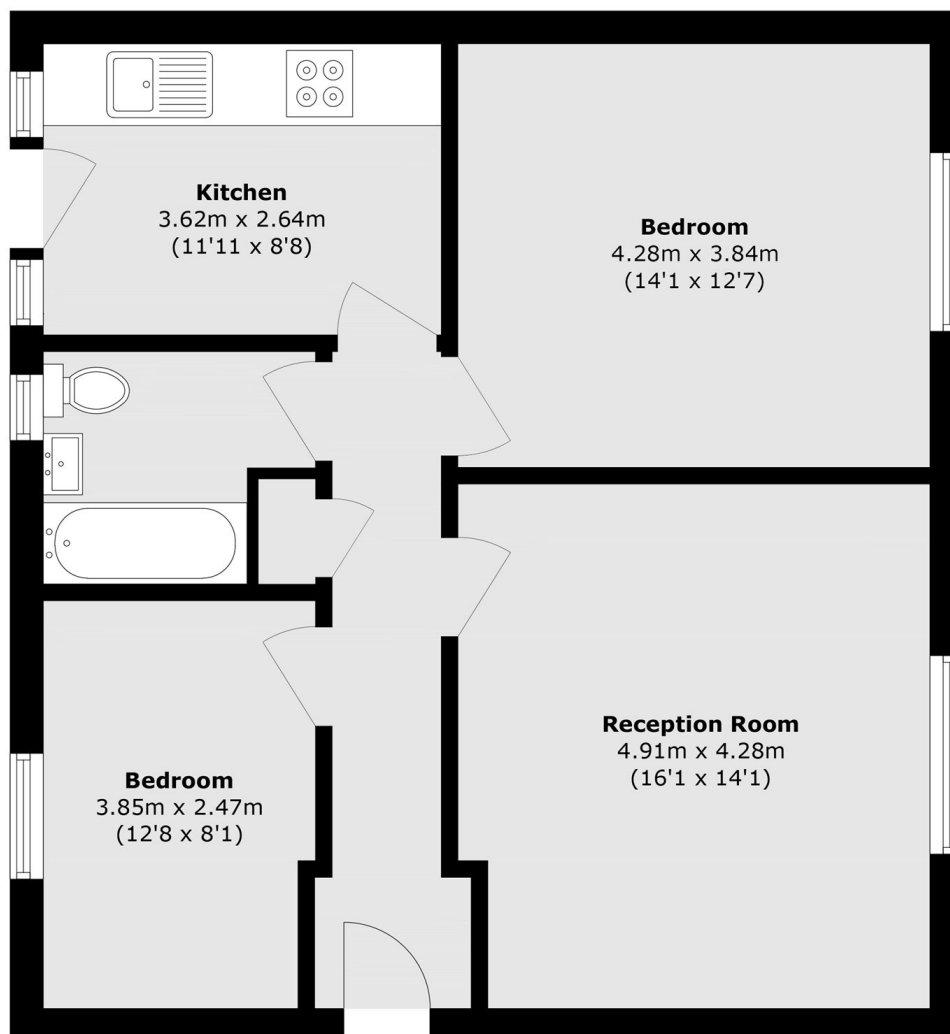
This is a fantastic two bedroom flat located on the sixth floor of this 1930s portered mansion block. The property benefits from heating and hot water included in the service charge.

Located on Coram Street in Bloomsbury this two bedroom home provides excellent access to the underground at Russell Square, The Brunswick shopping centre and numerous universities including UCL, LSE and King's.

### Features

- Two Double Bedrooms
- Separate Living Room
- Lift Access
- Porter Service
- 44 Year Lease
- No Onward Chain

# Coram Street, London, WC1N



Total area (approx.): 70.3 sq. m (756.7 sq. ft)