



## Broad Street

Littledean, Cinderford, GL14 3NQ

£195,000

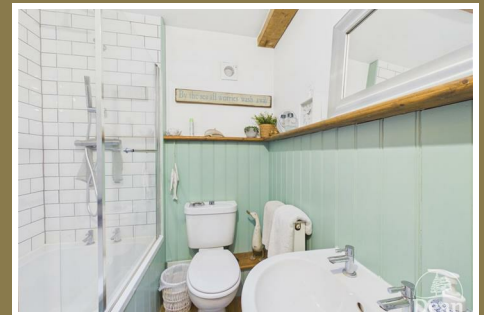


Situated in the charming village of Littledean, this delightful end-terrace house on Broad Street offers a perfect blend of character and modern living. Built around 1900, the property boasts a rich history while providing all the comforts of contemporary life.

Upon entering, you are welcomed into a spacious reception room, ideal for both relaxation and entertaining. The room is filled with natural light, creating a warm and inviting atmosphere. The house features two well-proportioned bedrooms, providing ample space for a small family or professionals seeking a peaceful retreat. The bathroom is conveniently located, ensuring ease of access for all residents.

The sought-after village location enhances the appeal of this property, offering a sense of community and tranquillity. Residents can enjoy the local amenities, including shops, parks, and schools, all within a short distance. The surrounding area is perfect for those who appreciate the beauty of nature, with scenic walks and outdoor activities readily available.

This end-terrace house is an excellent opportunity for anyone looking to settle in a village setting while enjoying the charm of a period property. With its combination of space, character, and location, this home is sure to attract interest from a variety of buyers. Do not miss the chance to make this lovely house your new home.



#### Sitting Room :

10'7" x 12'2" (3.25 x 3.73)

Entered via UPVC door, feature stone/brick fireplace with multi fuel stove, exposed stone painted wall, natural wood floor, radiator, double glazed window to front aspect, latch door to kitchen.

#### Kitchen :

12'1" x 12'2" (3.69 x 3.73)

Matching wall and base cabinets, Belfast style sink, gas/electric range cooker with feature brick surround and timber mantle, plumbing for washing machine, space for fridge/freezer, vertical radiator, stairs to first floor with under stairs recess and cupboard, stable door to outside, double glazed window to rear aspect.

#### First Floor Landing :

3'11" x 5'3" (1.20 x 1.61)

Access to loft space (ladder in the attic space but not fixed, insulated), wooden flooring.

#### Bedroom 1 :

8'9" x 12'1" (2.67 x 3.69)

Period Fireplace, wooden flooring, double glazed window to front aspect.

#### Bedroom 2 :

8'2" x 9'8" (2.49 x 2.95)

Period fireplace, built in cupboard containing gas central heating boiler, wooden flooring, double glazed window to rear aspect.

#### Bathroom :

6'1" x 6'6" (1.87 x 1.99)

Bath with rain shower over, low level WC, pedestal wash hand basin, partially wood paneled walls, extractor fan, radiator, wood flooring, tube lighting.

#### Outside :

Front - Small courtyard.

Rear - Attached storage shed, stepping stones, Astro turf, small area of decking, shrubs and flower borders, water tap, rear gate access.



Consumer Notes: Dean Estate Agents Ltd have prepared the information within this website/brochure with care and co-operation from the seller. It is intended to be indicative rather than definitive, without a guarantee of accuracy. Before you act upon any information provided, we request that you satisfy yourself about the completeness, accuracy, reliability, suitability or availability with respect to the website or the information, products, services, or related graphics contained on the website for any purpose.

These details do not constitute any part of any Offer, Contract or Tenancy Agreement.

Photographs used for advertising purposes may not necessarily be the most recent photographs, although every effort is made to update photographs at the earliest opportunity. Any reliance you place on such information is therefore strictly at your own risk. All photographic images are under the ownership of Dean Estate Agents Ltd and therefore Dean Estate Agents retain the copyright.

You must obtain permission from the owner of the images to reproduce them.

Tenanted Property – we are not always able to show the most recent condition of a property due to tenants' privacy and we may choose to show the photographs of the property when it was last vacant to at least allow clients some idea of the internal condition. Therefore, we would of course, urge you to view before making any decisions to purchase or rent the property and before any costs.

Energy Performance Certificates are supplied to us via a third party and we do not accept responsibility for the content within such reports.

PRC Certificates – Some ex-local authority properties have been repaired in recent years using the PRC Scheme wherein a certificate has been produced by a qualified property engineer. This certificate does not imply the suitability for a mortgage approval and you must satisfy yourself of the work carried out that may meet your lenders criteria.

As with leasehold property or new build development sites, you are likely to be responsible for a contribution to management charges and/or ground rent or a contribution to the development service charge. Please enquire at the time of viewing.

You may also incur fees for items such as leasehold packs and, in addition, you will also need to check the remaining length of any lease before you complete a mortgage application form.

Please ask a member of our team for any help required before committing to purchase a property and incurring expense.

## Road Map



## Hybrid Map



## Terrain Map



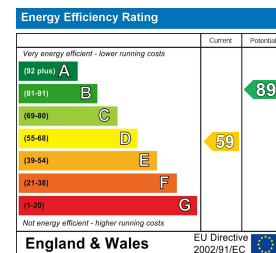
## Floor Plan



## Viewing

Please contact our Cinderford Office on 01594 825574 if you wish to arrange a viewing appointment for this property or require further information.

## Energy Efficiency Graph



These particulars, whilst believed to be accurate are set out as a general outline only for guidance and do not constitute any part of an offer or contract. Intending purchasers should not rely on them as statements of representation of fact, but must satisfy themselves by inspection or otherwise as to their accuracy. No person in this firm's employment has the authority to make or give any representation or warranty in respect of the property.